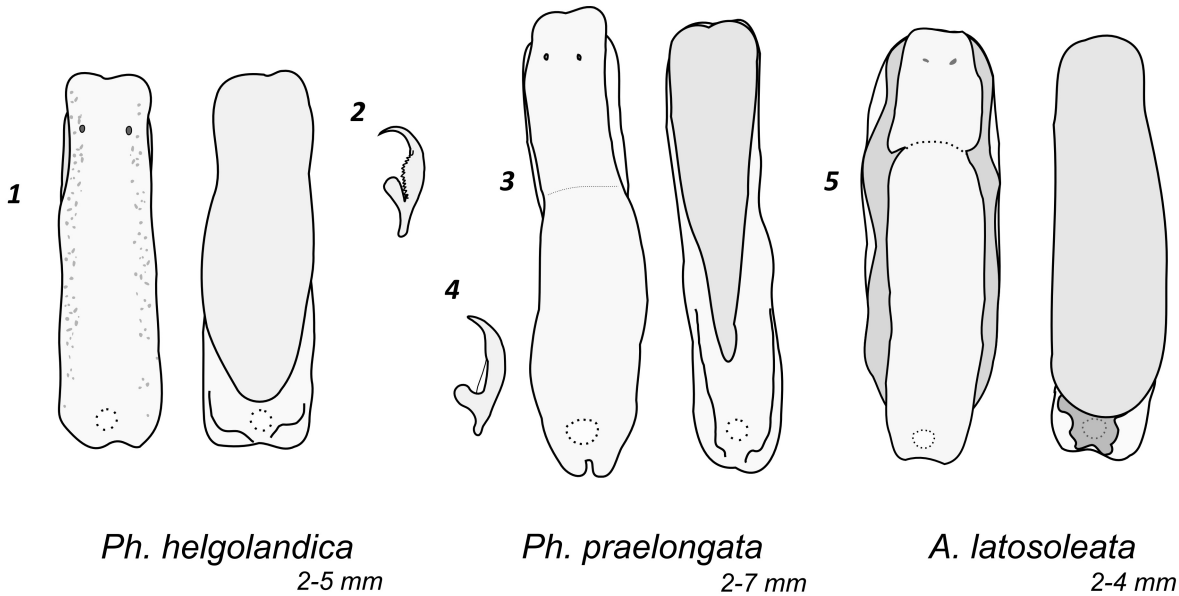


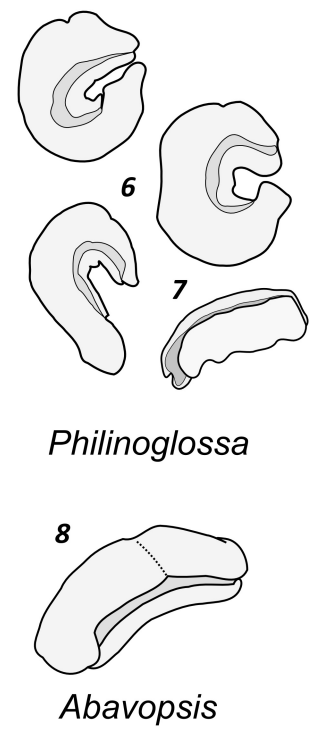


Taxa with squarish front end, no tentacles, foot long

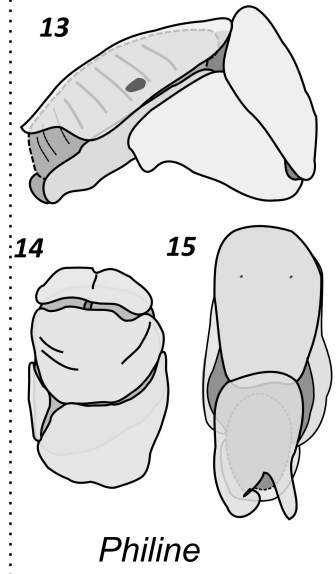
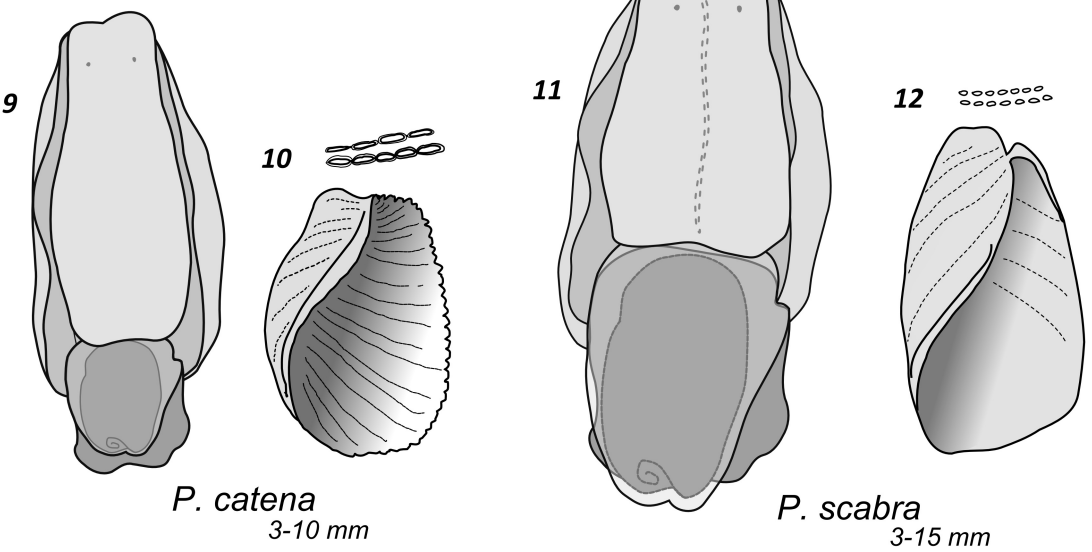
Philoglossidae: *Philoglossa* and *Abavopsis*



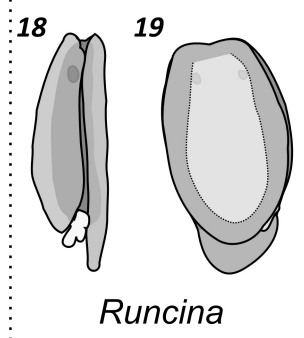
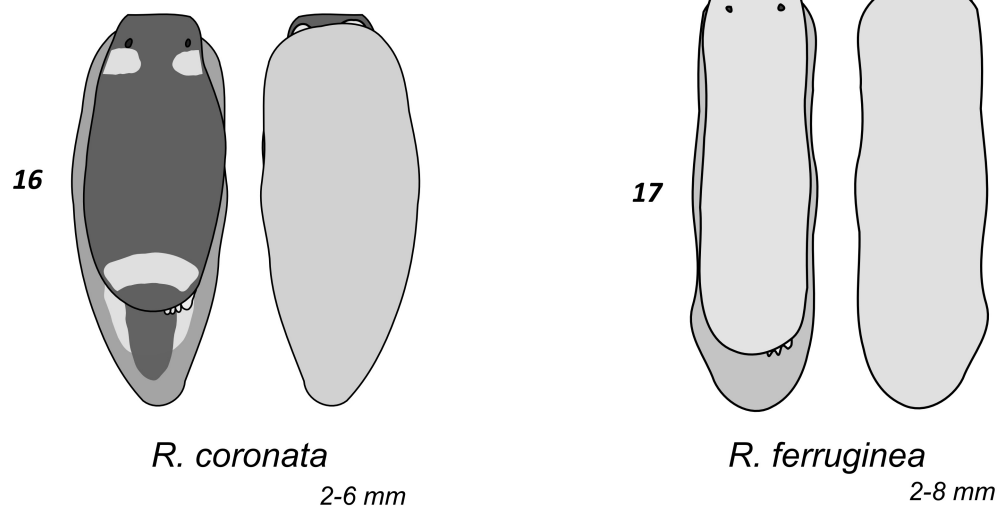
preserved specimens



Philineidae: *Philine*



Runcinidae: *Runcina*

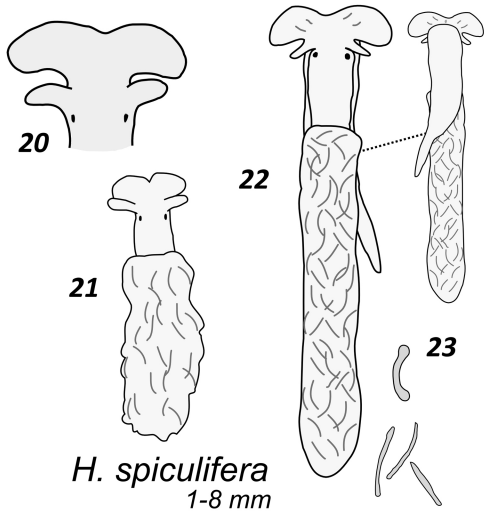


B

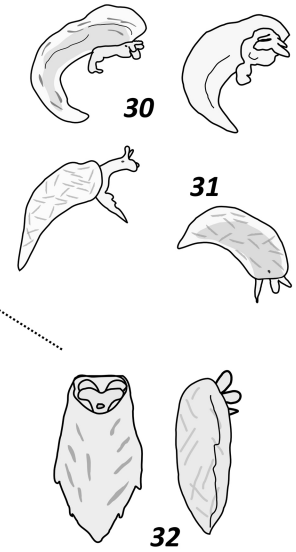
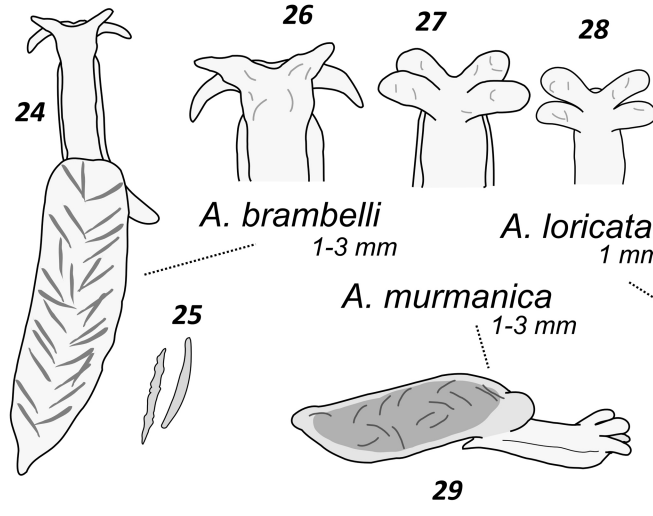
Taxa with with free visceral sac, foot short, with spicules

preserved specimens

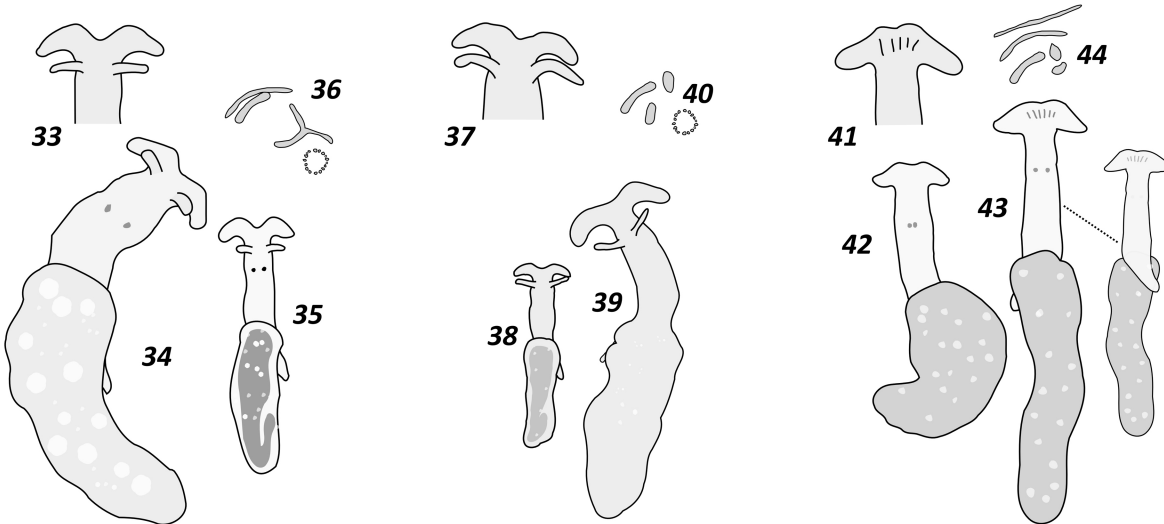
Hedylopsidae: *Hedylopsis*



Asperspinidae: *Aspersina* (3 species)



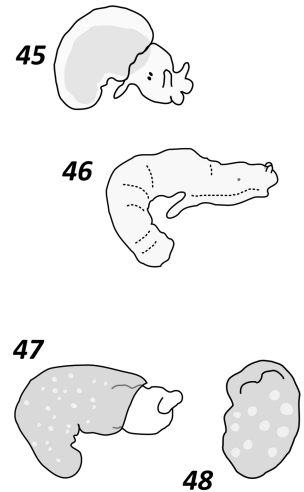
Microhedylidae: *Microhedyle*, *Parhedyle*, and *Pontohedyle*



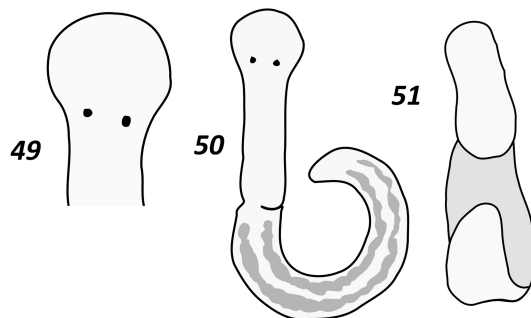
Microhedyle glandulifera
1-5 mm

Parhedyle cryptophthalma
1-2 mm

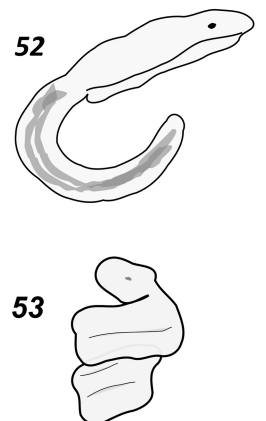
Pontohedyle milaschewitschii
1-7 mm



Platyhedylidae: *Platyhedyle*



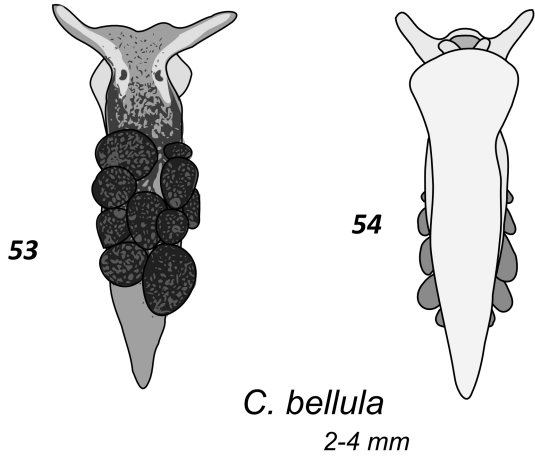
Platyhedyle denudata
1-4 mm



C

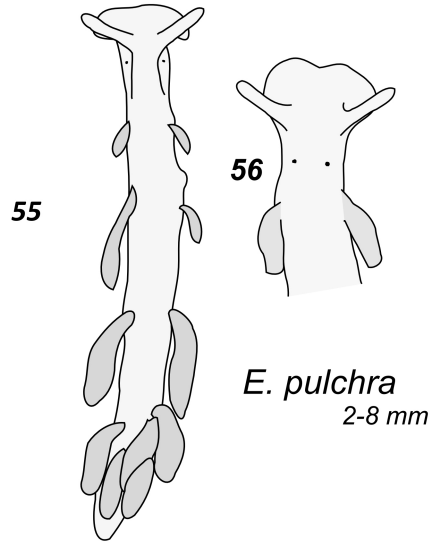
Taxa with dorsal appendages (cerata)

Limapontiidae: *Calliopaea*



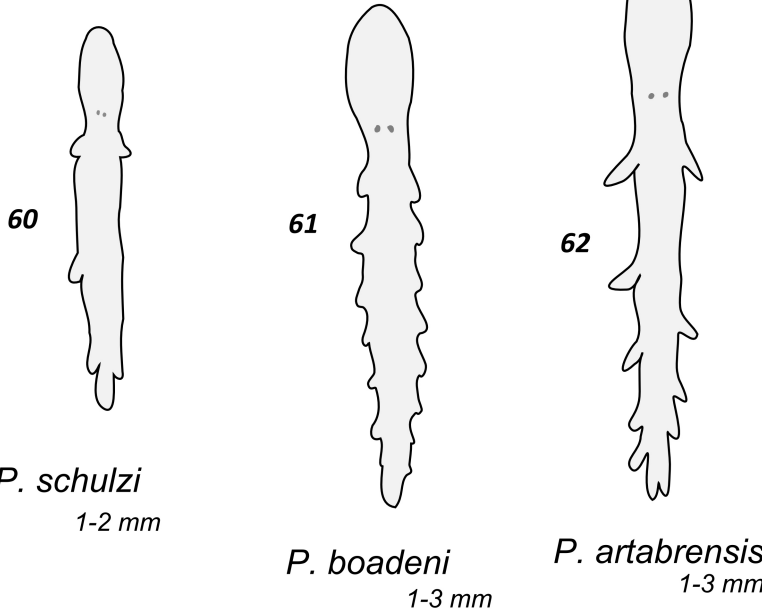
C. bellula
2-4 mm

Embletoniidae: *Embletonia*



E. pulchra
2-8 mm

Pseudovermidae: *Pseudovermis*

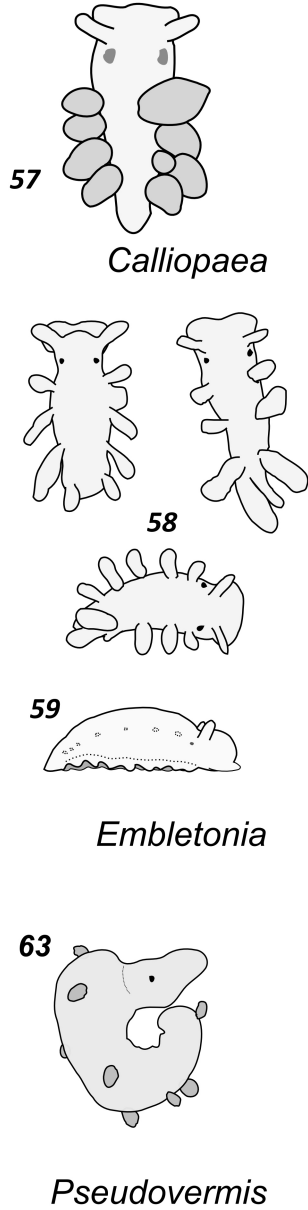


P. schulzi
1-2 mm

P. boadeni
1-3 mm

P. artabrensis
1-3 mm

preserved specimens



Calliopaea

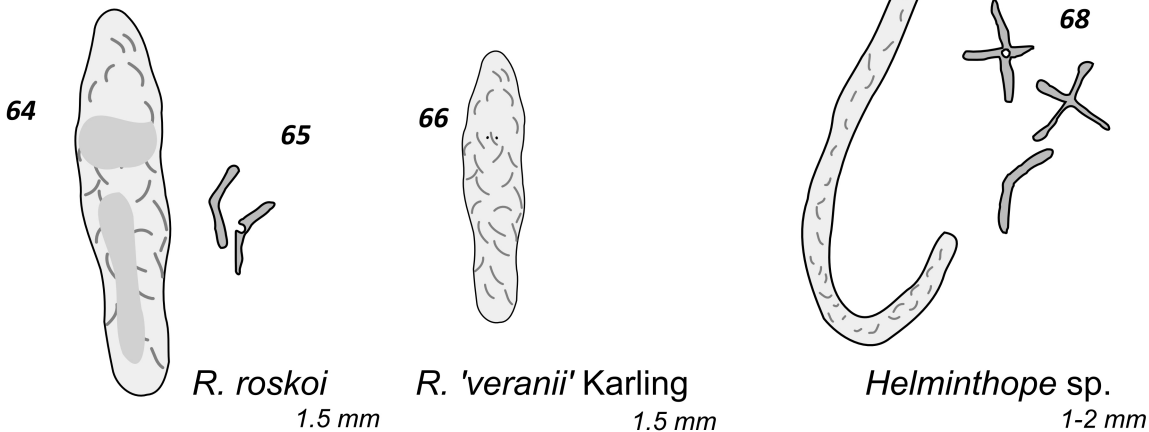
Embletonia

Pseudovermis

D

Worm-like taxa, with spicules

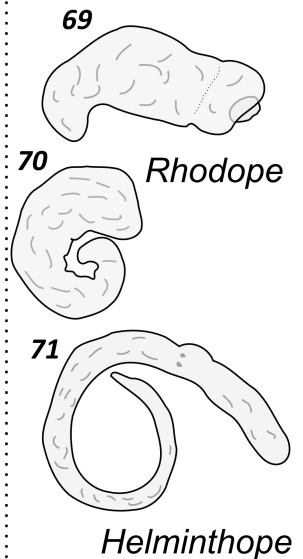
Rhodopidae: *Rhodope* and *Helminthope*



R. roskoii
1.5 mm

R. 'veranii' Karling
1.5 mm

Helminthope sp.
1-2 mm



Rhodope

Helminthope