

Ophryotrocha from European waters

Characters of species of *Ophryotrocha* and allied forms from European waters

Eivind Oug

November 2003

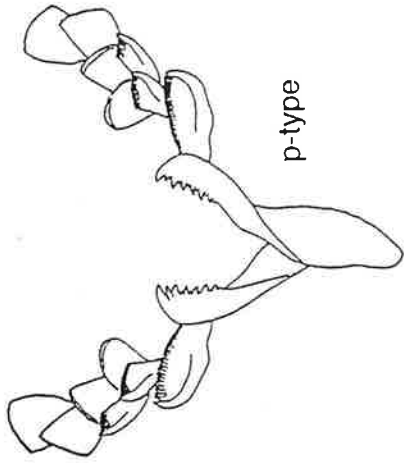
+ present, - absent, pap = papilliform, min = minute, dig = digitiform, biart = bi-articulate

	No of setigers	Ant.	Palps	Dors. cirri	Ventr. cirri	p-type forceps	K-type forceps	mand. shape	Special characters / comments
<i>Ophryotrocha puerilis</i> Claparede & Meenikov, 1863	30	+	pap.	pap.	pap.	serr. margin, distal hook	unidentate	2 serr teeth	
<i>Ophryotrocha genyonicola</i> (Esmark, 1874)	>100	pap	+	pap.	pap.			serrated straight edge	Commensal in crab <i>Geryon tridens</i>
<i>Ophryotrocha littoralis</i> (Levinsen, 1879)	25-32	+	+	-	-	serr. margin, distal hook	(?)	4 serr teeth	
<i>Ophryotrocha puerilis siberi</i> (McIntosh, 1885)	30	+	+	pap.	pap.	serr. margin, distal hook	unidentate	2 serr teeth	
<i>Ophryotrocha hartmanni</i> Huth, 1933	30	+	-	-	-	serr. margin, distal hook	bidentate	2 serr teeth	
<i>Ophryotrocha gracilis</i> Huth, 1933	27-30	+	-	-	-	serr. margin	-	2 serr. teeth	
<i>Ophryotrocha bacci</i> Parenti, 1961	30-32	+	+	+	+	serr. margin, distal hook	-	2 serr teeth	
<i>Ophryotrocha labronica</i> la Greca & Bacci, 1962	25	pap.	-	-	-	two teeth distally	left unident., right bident.	2 serr teeth	
<i>Ophryotrocha maculata</i> Åkesson, 1973	20-34	dig.	-	+	+	serr. margin	bidentate	2 serr teeth	Segments with transverse rows of dark pigment spots
<i>Ophryotrocha dubia</i> Hartmann-Schröder, 1974	11	-	-	pap	-	strong fang	-	2 serr teeth	
<i>Ophryotrocha gerlachi</i> Hartmann-Schröder, 1974	8	+	-	-	-	long, partly serr margin, strong hook	-	smooth edge	
<i>Ophryotrocha longidentata</i> Josefson, 1975	42	dig.	biart.	+	pap.	serr. margin, distal hook	-	smooth edge	
<i>Ophryotrocha irinae</i> Tsetlin, 1980	28 (?)	+	+	+	min	serr. margin, dist fang	- (?)	2 serr teeth	pigment spots on prostomium
<i>Ophryotrocha scarlatoi</i> Averincev, 1989	34	+	+	pap.	-	serr. margin, distal hook	-	2 serr teeth	scalloped longitudinal folds on posterior body
<i>Ophryotrocha minuta</i> Averincev, 1989	?	-	-	+	pap	serr. margin, distal hook	?	2 long teeth	
<i>Ophryotrocha socialis</i> Ockelmann & Åkesson, 1990	19	+	-	pap.	-	serr. margin	-	2 serr teeth	

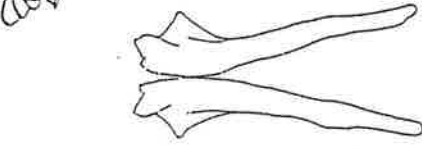
	No of setigers	Ant.	Palps	Dors. cirri	Ventr. cirri	p-type forceps	K-type forceps	mand. shape	Special characters / comments
<i>Ophryotrocha mediterranea</i> Martin, Abello & Cautes, 1991	20- >100	dig.	+	pap	pap			serrated straight edge	Commensal in crab <i>Geryon longipes</i>
<i>Ophryotrocha adherens</i> Paaov, Bailey-Brock & Akesson, 2000	19	+	pap.	-	-	ser. margin	unidentate	2 serr teeth	small body size (<4 mm)
<i>Manniphitime cosmetandra</i> (Oug, 1990)	32	+	-	-	-	ser. margin	(males only) unident.	3 serr teeth	males with posterior dorsolateral processes
<i>Palpiphitime lobifera</i> (Oug, 1978)	43	+	biart.	+	+	ser. margin, distal hook	unidentate	wide straight serr edge	segments with prominent lateral lobes
<i>Parophryotrocha isochaeta</i> (Eliason, 1962)	80-90	-(?)	-(?)	-	-	?	unidentate	undulating edge	Simple chaetae distally blunt, no composite chaetae
<i>Iphitime crenoti</i> Fauvel, 1914	60	+	-	large, flat	-				In gill chambers of various crabs
<i>Iphitime paguri</i> Fagc & Legendre, 1934	170	+	-	short, flat	-			flat plates, smooth edge	In gill chamber of hermit crabs and brachyuran crabs
<i>Iphitime hartmannae</i> Kirkegaard, 1977	130	+	-	club-shaped	-				In crab <i>Hyas coarctatus</i> and <i>H. araneus</i>
<i>Arenotrocha minuta</i> (Levi, 1954)	8-10	dig.	+	-	-	(plates with irregular serration)	-	smooth edge	maxillae with no forceps

Parophryotrocha isochaeta
 This species is very common
 found in the water column of
 the sea. It is a very small
 species, but it is very
 numerous. It is found in
 the water column of the sea.

Maxillae and mandibles



p-type



K-type

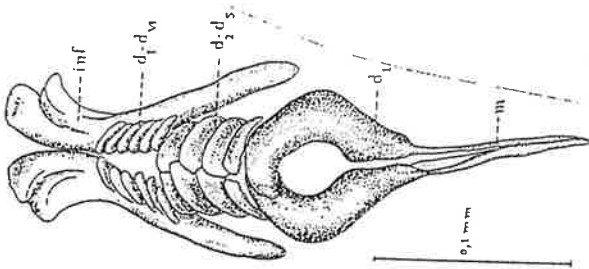
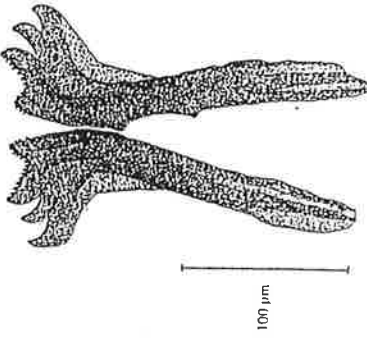


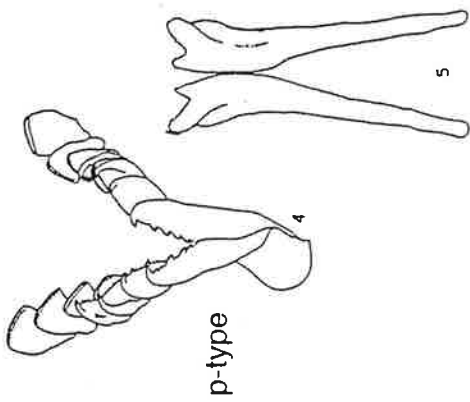
Fig. 6.

Ophryotrocha geryonicola

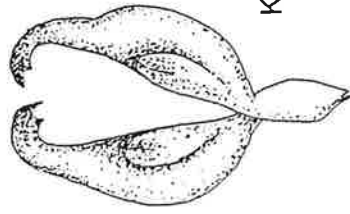


Ophryotrocha littoralis

Ophryotrocha puerilis

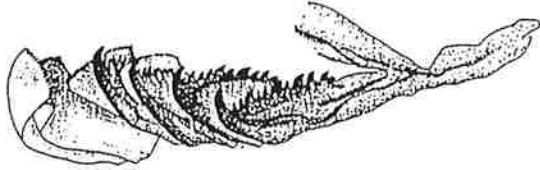


p-type

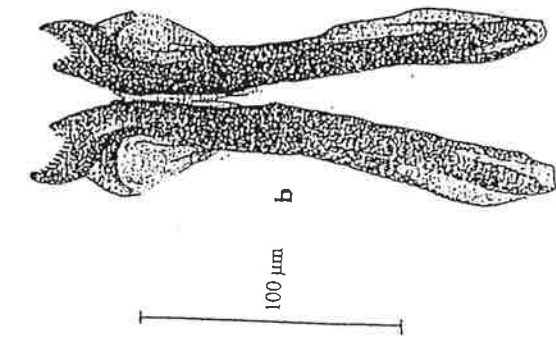


K-type

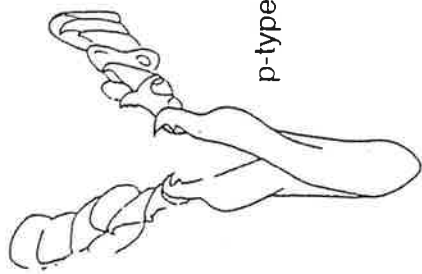
Ophryotrocha hartmanni



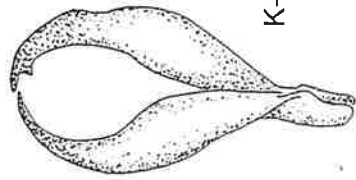
Ophryotrocha gracilis



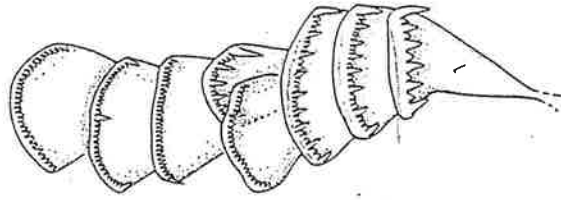
Ophryotrocha bacci



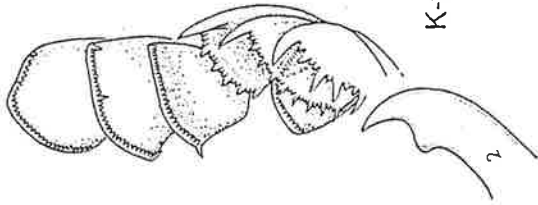
p-type



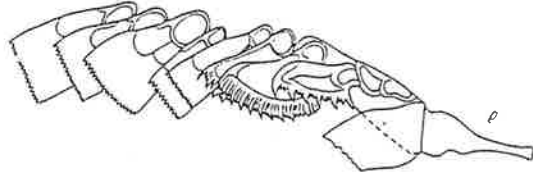
K-type



p-type

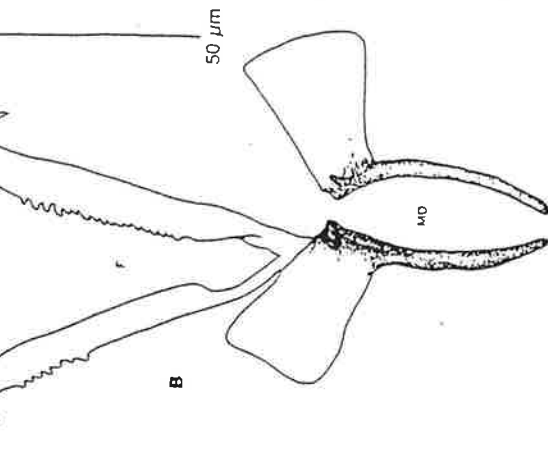


K-type



p

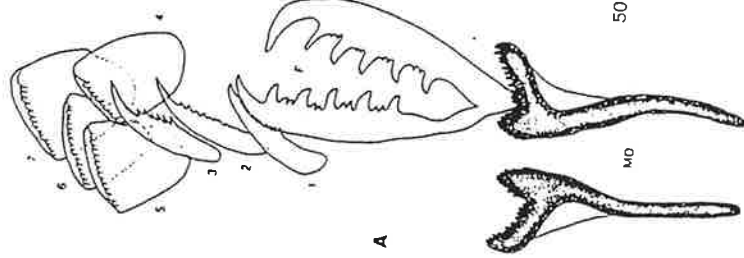
Ophryotrocha labronica



B

50 µm

Ophryotrocha gerlachi

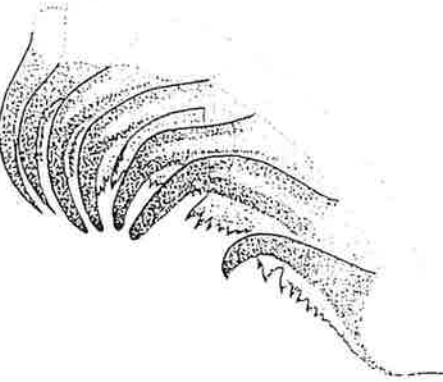


A

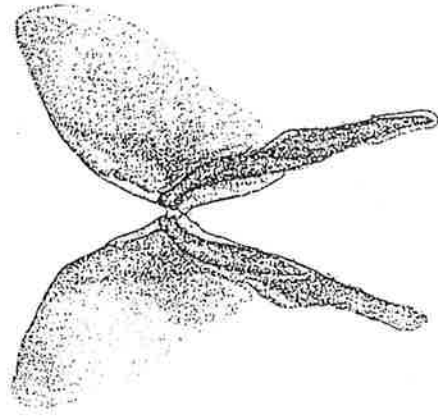
50 µm

Ophryotrocha dubia

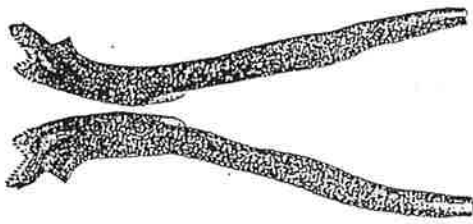
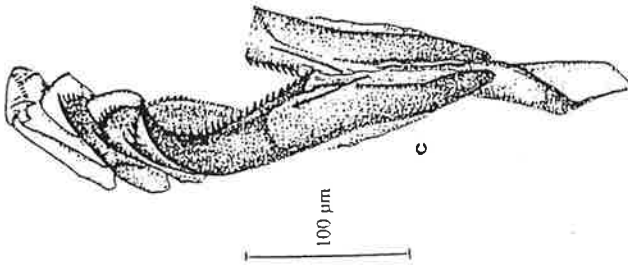
Ophryotrocha maculata



Ophryotrocha irinae



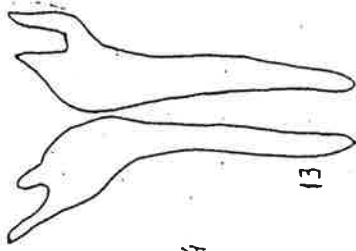
Ophryotrocha longidentata



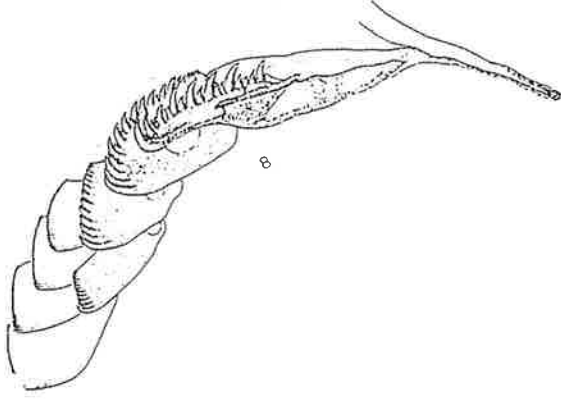
Ophryotrocha scarlattoi



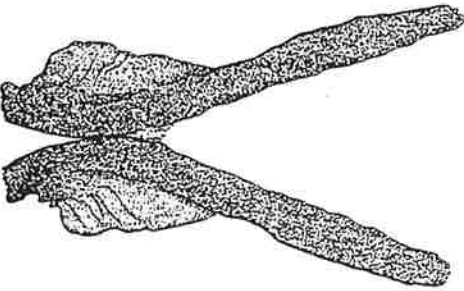
Ophryotrocha minuta



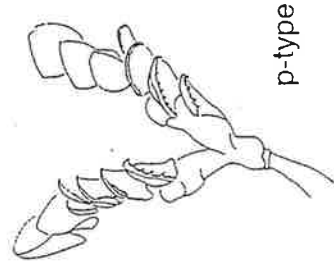
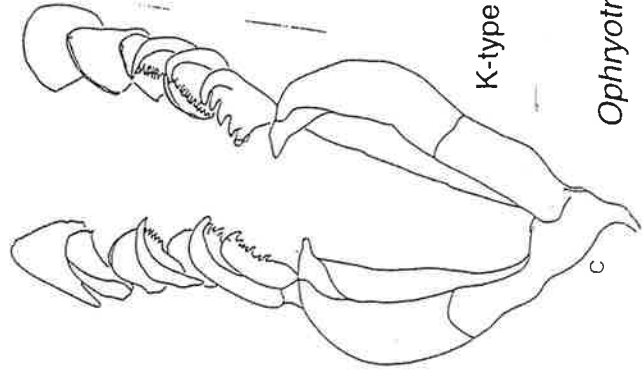
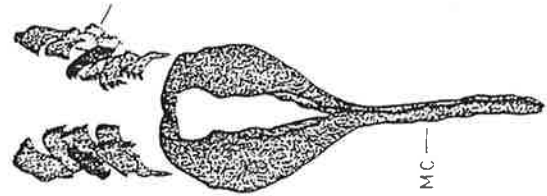
Ophryotrocha adheres

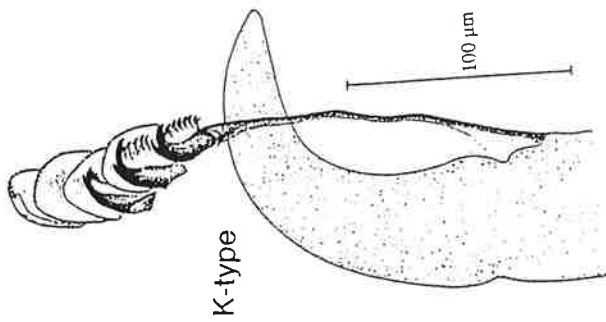


Ophryotrocha socialis

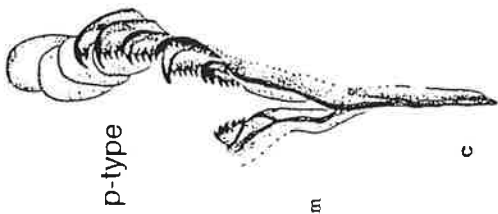


Ophryotrocha mediterranea





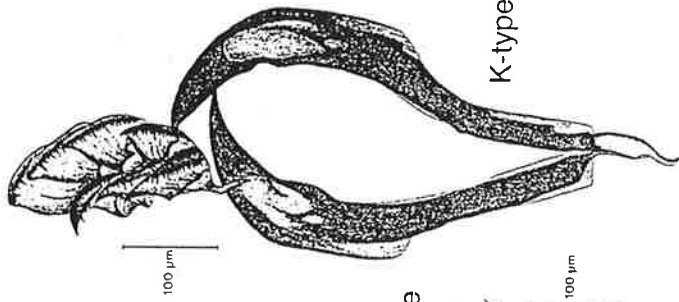
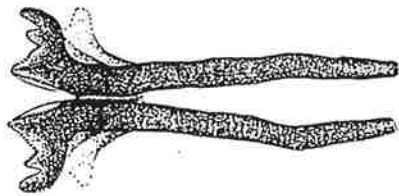
K-type



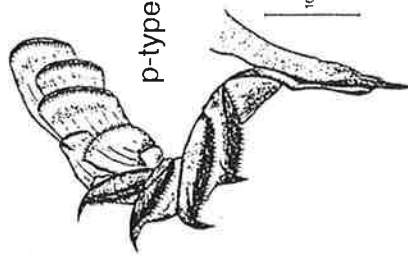
p-type

c

Mammiphitime cosmometandra

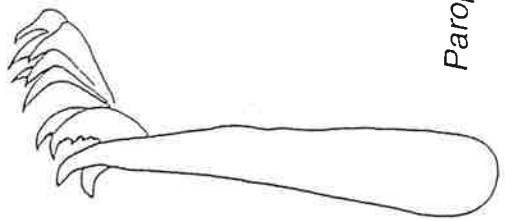


K-type

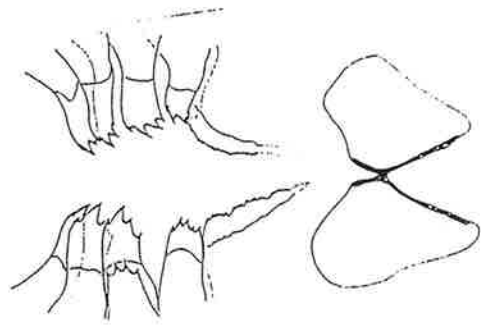


p-type

Palpiphitime lobifera



Parophryotrocha isochoeta



Arenotrocha minuta