

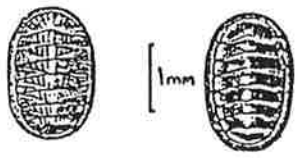
MOLLUSCA.

Pictorial Guide

EBSA Mollusc Workshop

Oban 1986

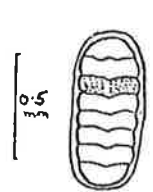
Pictorial guide to British Molluscs.
 Stelagh Smith, EBSA workshop Oban
 Apr-May 86.



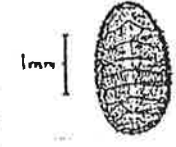
Leptochiton asellus



Leptochiton cancellatus



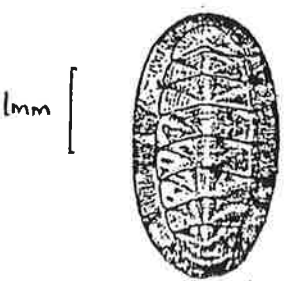
Leptochiton scabridus



Hanleya hanleyi



Ischnochiton albus



Callochiton achatinus



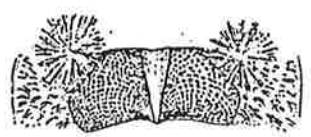
Tonicella marmorata



Tonicella rubra



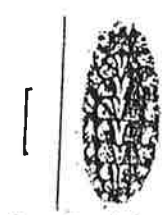
Lepidochitona cinereus



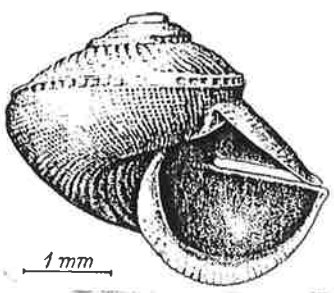
Acanthochitona communis



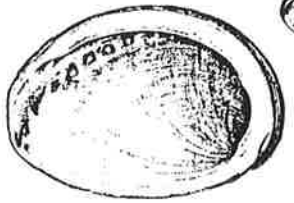
Acanthochitona crinitus



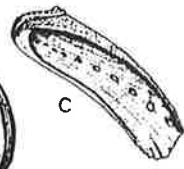
Acanthochitona discrepans
 ⇒ COMMUNIS



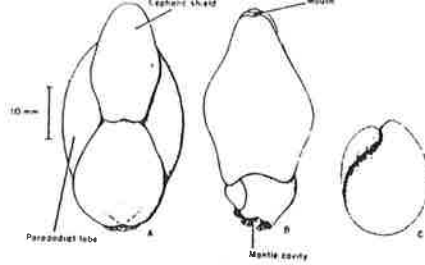
Scissurella crispata



Haliotis tuberculata

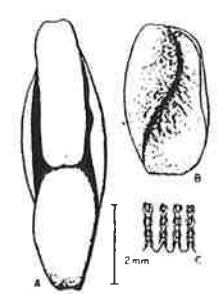
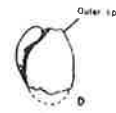


Acteon tornatilis

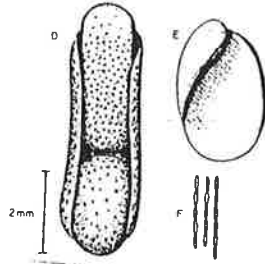


Philine aperta

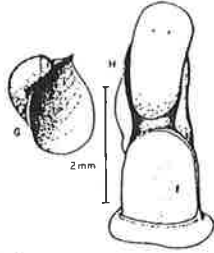
Philine angulata



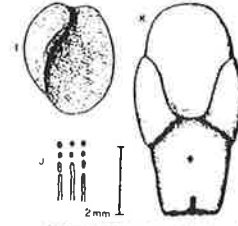
Philine scabra



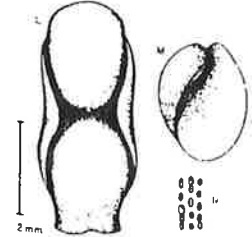
Philine catena



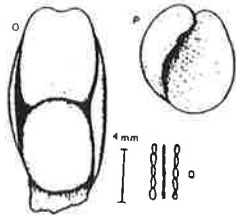
Philine denticulata



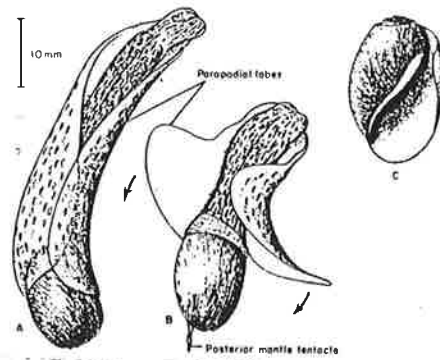
Philine pruinosa



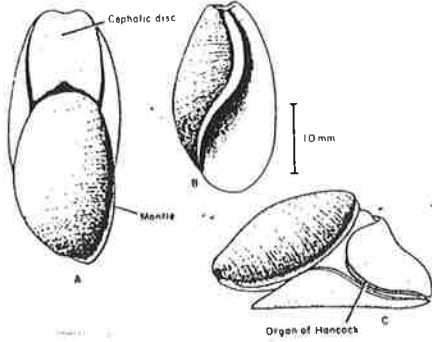
Philine punctata



Philine quadrata



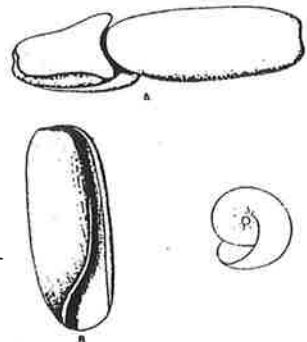
Akera bullata



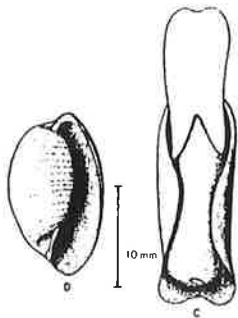
Scaphander lignarius



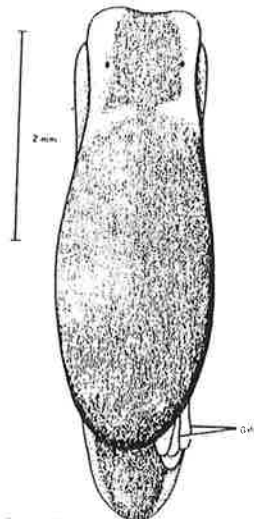
Scaphander punctestriatus



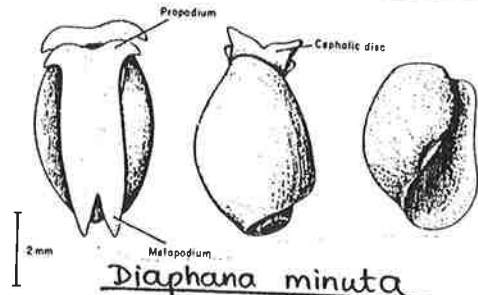
Cylichna cylindracea



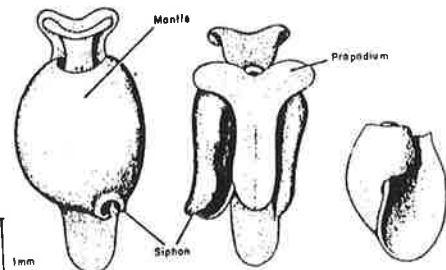
Roxania ubriculus



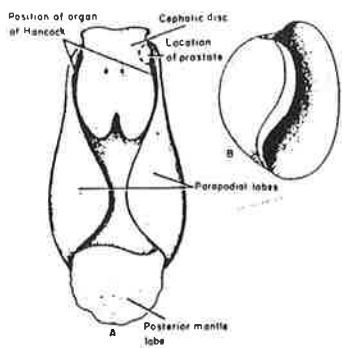
Runcina coronata



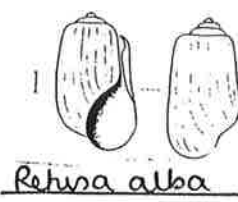
Diaphana minuta



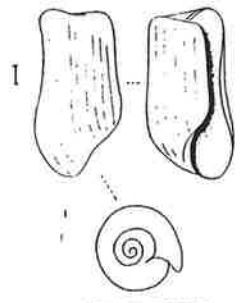
Colpodaspis pusilla



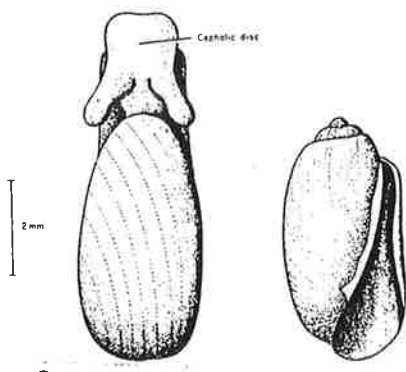
Haminoea navicula



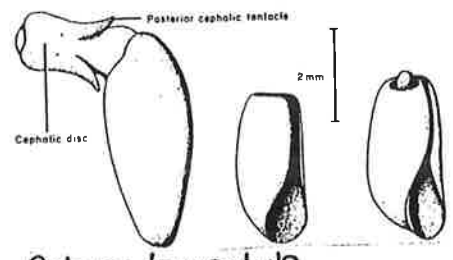
Retusa alba



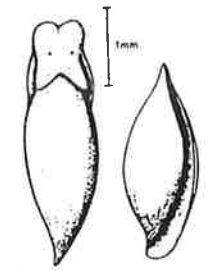
Retusa rehusa



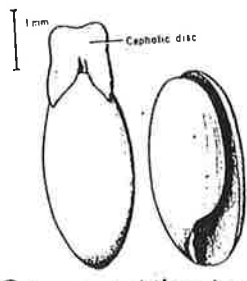
Retusa obtusa



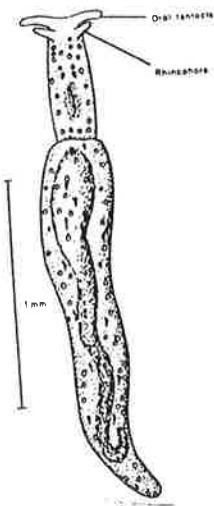
Retusa truncatula



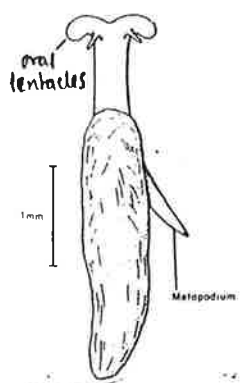
Rhizorus acuminatus



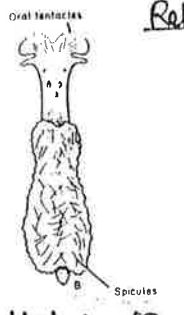
Retusa umbilicata



Microhedyle glandulifera



Hedylopsis suecica



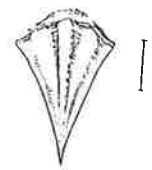
Hedylopsis spiculifera



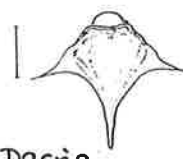
Hedylopsis brambelli



Limacina retroversa



Clione pyramidata



Dacrydium bispinosum



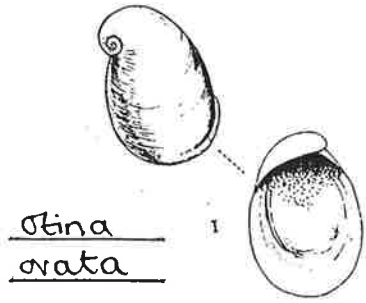
Clione limacina



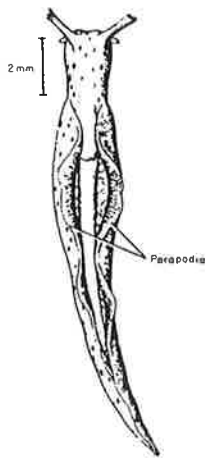
Ovatella myosotis



Leucophytia bidentata



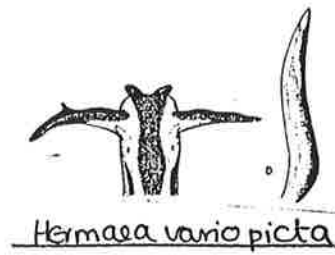
Stina ovata



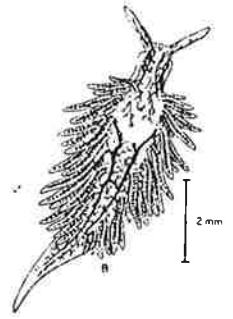
Elysia viridis



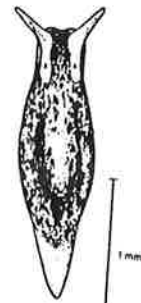
Hermaea bifida



Hermaea vario picta



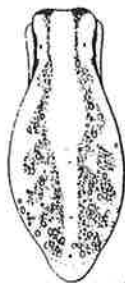
Placida dendritica



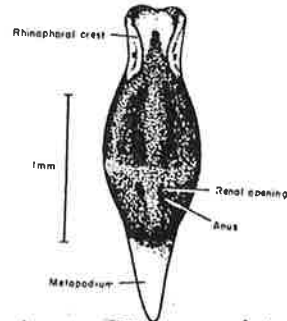
Limapontia senestra



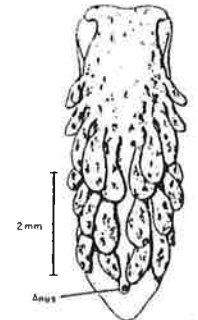
Calliopaea bellula



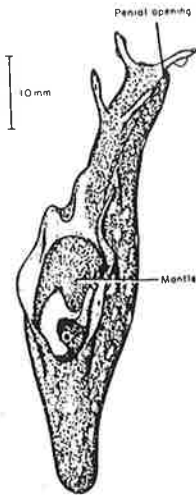
Limapontia depressa



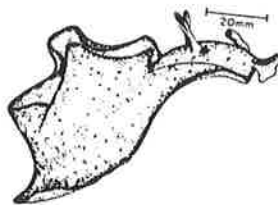
Limapontia capitata



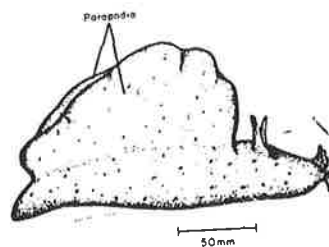
Alderia modesta



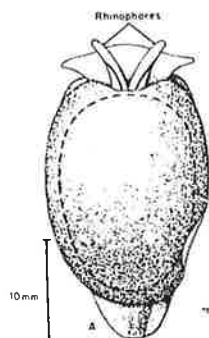
Aplysia punctata



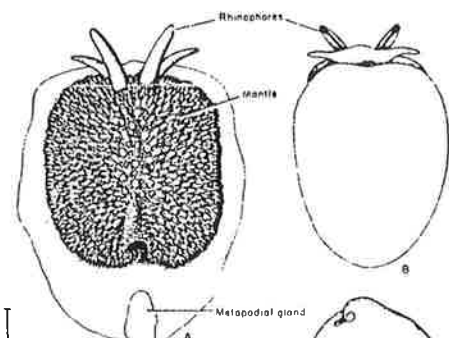
Aplysia depilans



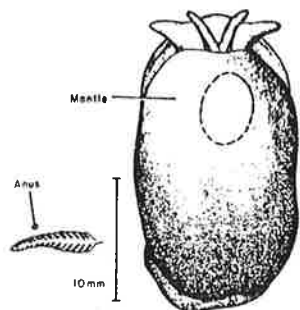
Aplysia fasciata



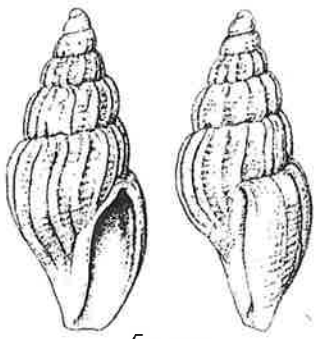
Bertholla plumula



Pleurobranchus membranaceus

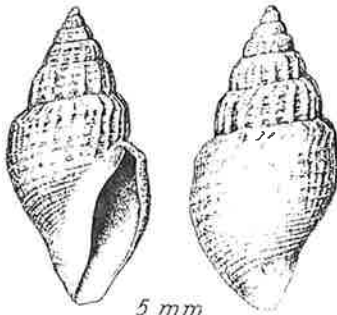


Bertholla citrina



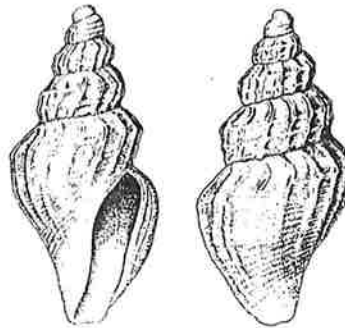
5 mm

Oenopota rufa



5 mm

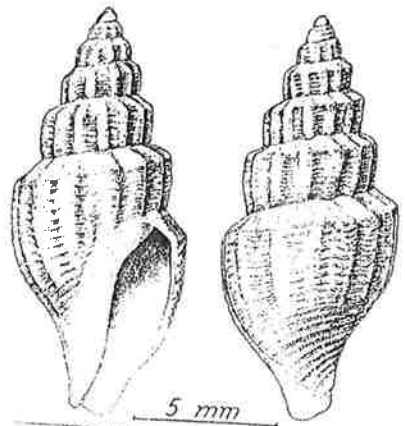
Oenopota bevelliana



5 mm

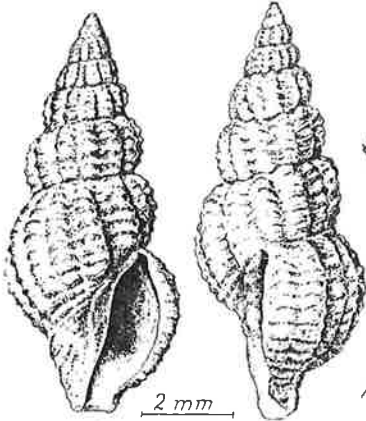
Oenopota elegans

Syn. O. turricula



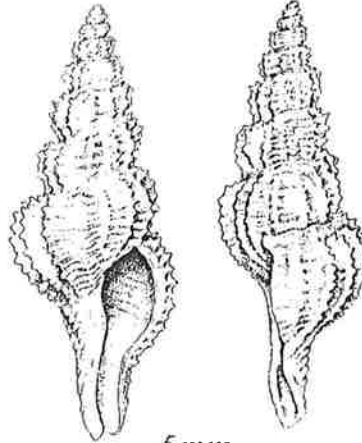
5 mm

Oenopota turricula



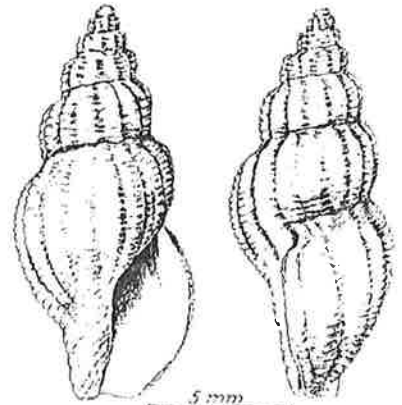
2 mm

Philbertia linearis



5 mm

Philbertia asperima



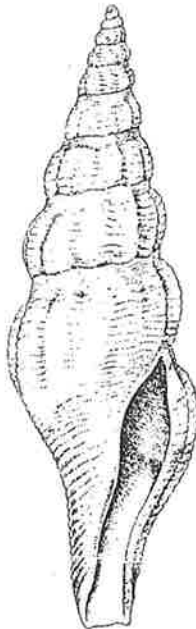
5 mm

Philbertia leufroyi



5 mm

Philbertia purpurea



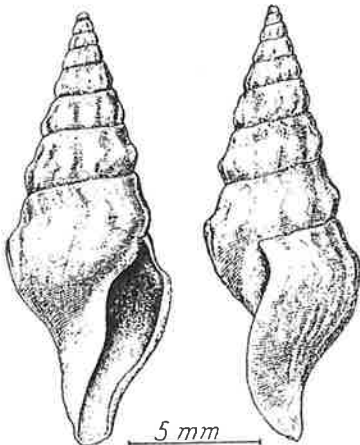
5 mm

Comarmondia gracilis



5 mm

Teretia anceps



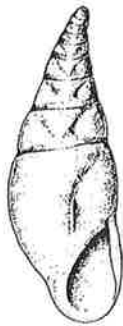
5 mm

Typhlomangelia nivalis



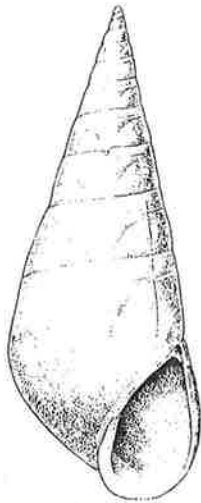
1mm

Vitreolina collinsi



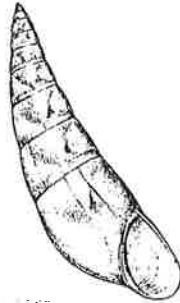
1mm

Vitreolina curva



2mm

Vitreolina petibiana



1mm

Vitreolina philippi



1mm

Pelseneria stilifera



1cm

Trophonopsis muricatus



5mm

Trophonopsis barvicensis

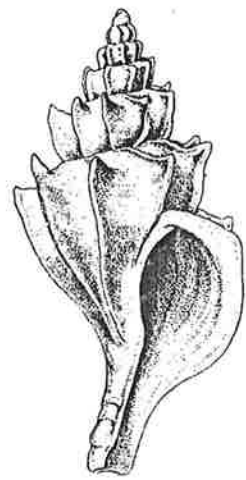


B



5mm

Boreostrophum truncatus



5mm

Boreostrophum clathratum



1cm

Nucella lapillus var. imbricata



1cm

Nucella lapillus



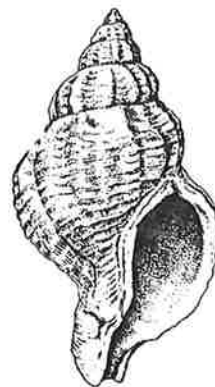
B

Ocenebra aciculata



1cm

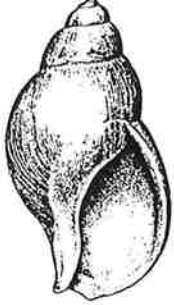
Ocenebra erinacea



1cm

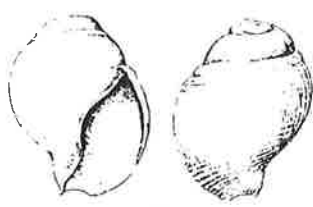
Urosalpinx cinerea





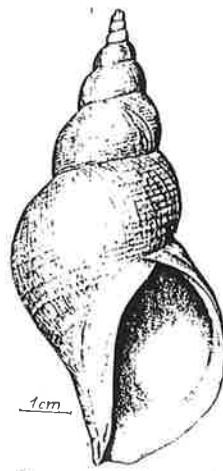
5 mm

Liomesus ovum



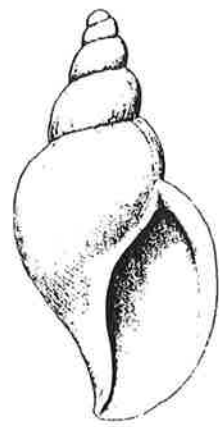
1 mm

Liomesus ovum juveniles



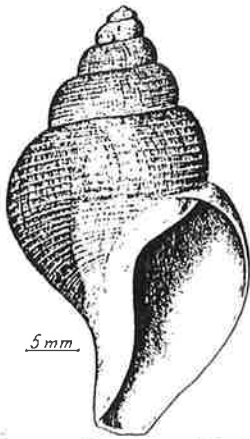
1 cm

Beringius turtoni



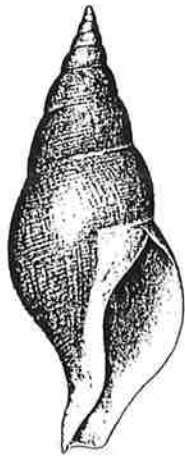
2 cm

Volutopsis norvegicus



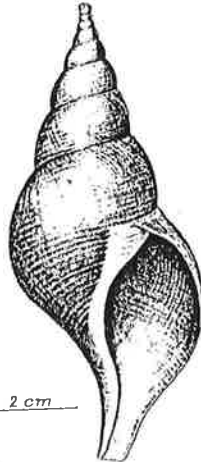
5 mm

Turrisipho moebii



1 cm

Colus gracilis



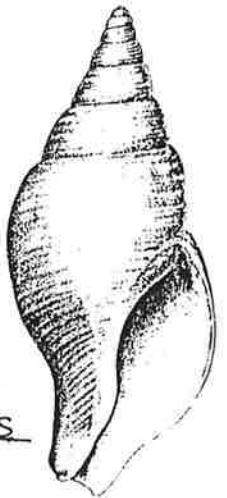
2 cm

Colus islandicus

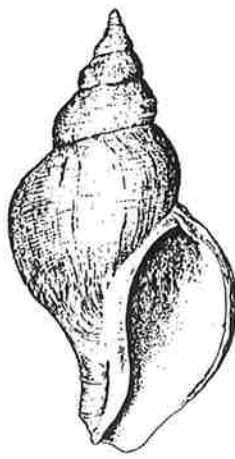


5 mm

varhausei



Colus jeffreysianus



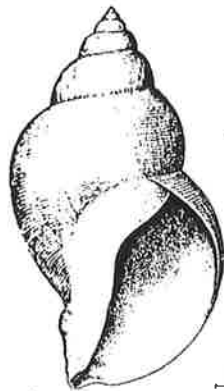
2 cm

Neptunea antiqua



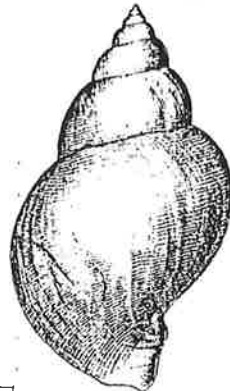
1 cm

Buccinum undatum



1 cm

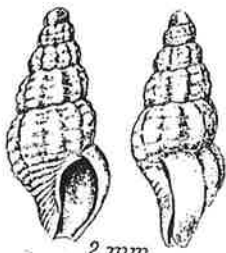
Buccinum humphreysianum



Colus jeffreysianus juvenile



1 mm



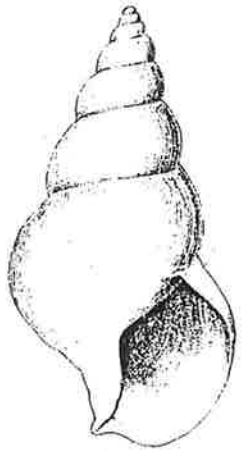
2 mm

Chauvetia brunnea



1 cm

Troscelia berniciensis



1 cm

Buccinum hydrophanum



1 mm

Chrysallida decussata



Chrysallida indistincta



1 mm

Chrysallida obtusa



1 mm

Chrysallida spiralis



Odostomia acuta



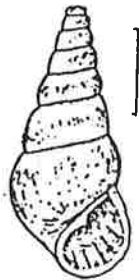
Odostomia albella



Odostomia conoidea



Odostomia conspicua



1 mm

Odostomia eulimoides



1 mm

Odostomia lukis



0.5

Odostomia nivosa



Odostomia oblongula



1 mm

Odostomia plicata



1 mm

Odostomia rissoides



1 mm

Odostomia turrita



Odostomia umbilicaris



1 mm

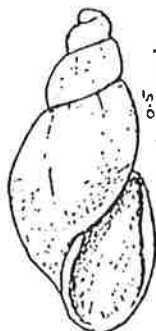
Odostomia unidentata



Menestho truncatula



Menestho divis



0.5

Menestho diaphana



0.5

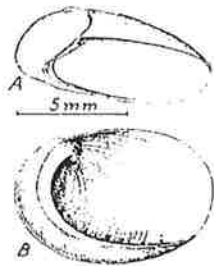
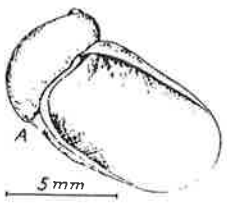


Brachystoma ambigua

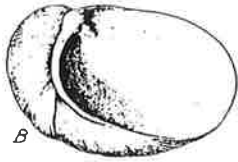


1 mm

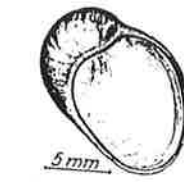
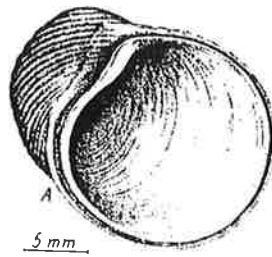
Tubonilla elegantissima



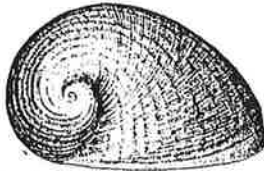
Lamellaria latens



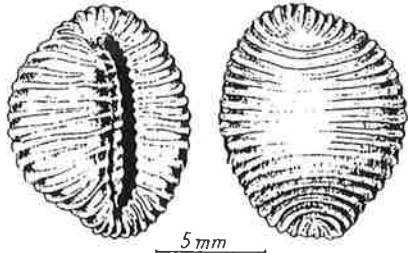
Lamellaria perspicua



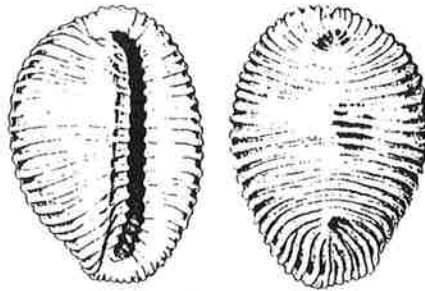
Velutina plicatilis



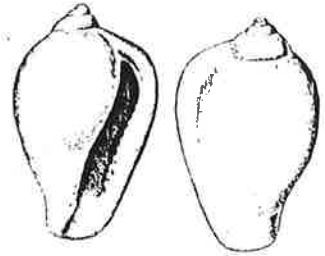
Velutina velutina



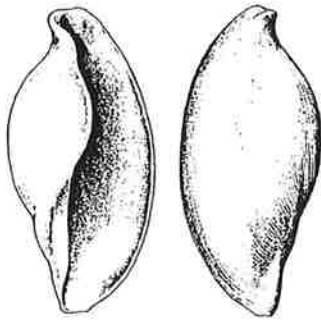
Trinia arctica



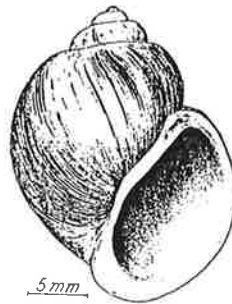
Trinia monacha



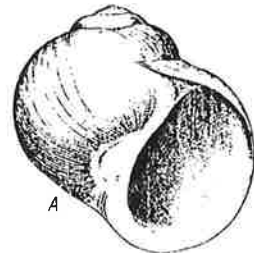
Erato voluta



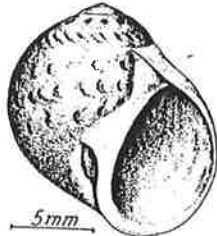
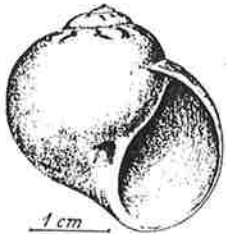
Simnia patula



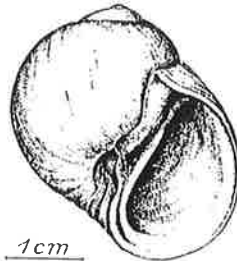
Bulbus islandicus



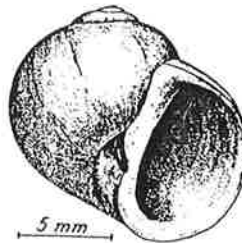
Natica clausa



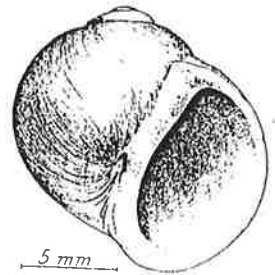
Lunatia alderi



Lunatia fusca



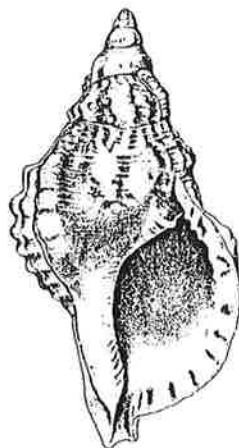
Lunatia montagui



Lunatia pallida



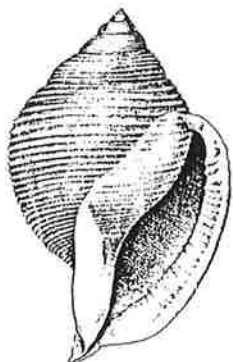
Lunatia catena



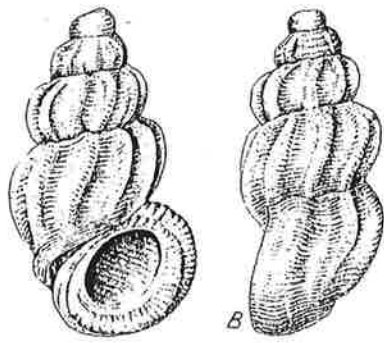
Charonia lampas



Cymatium cutaceum

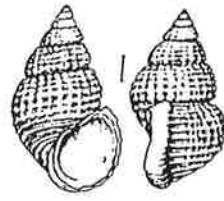


Cymatium cutaceum

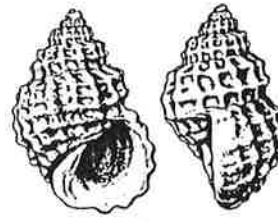


Manzonia crassa

1 mm

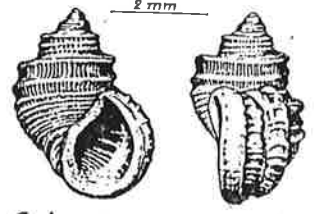


Acinulus cimicoides



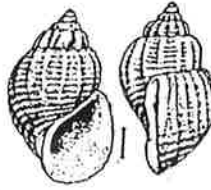
Acinopsis cancellata

1 mm

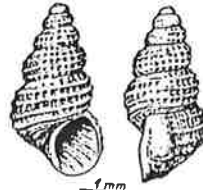


Galeodina carinata

2 mm

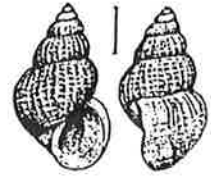


Massafia lactea

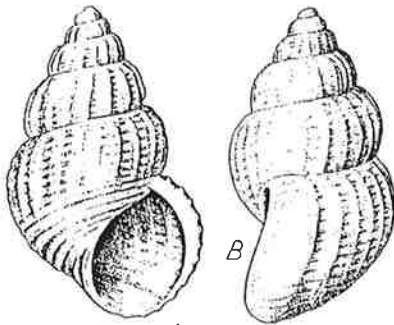


Alvinia jeffreysii

1 mm

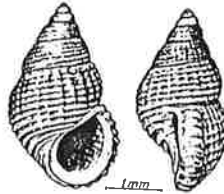


Alvinia punctura



Turbona abyssicola

1 mm

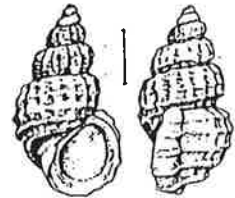


Turbona beanii

1 mm



Turbona subsoluta

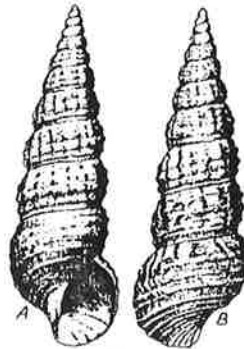


Flemiella zetlandica



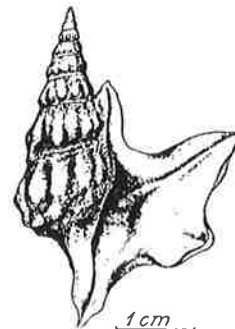
Turritella communis

1 cm



Aporrhais pespelecani

2 mm



Aporrhais serresianus

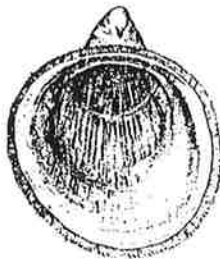
1 cm



1 cm

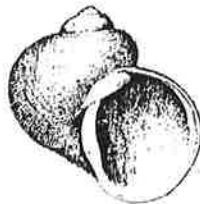


Bittium reticulatum



Capulus ungaricus

1 cm



Torellia vestita

5 mm

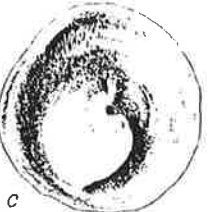


Crepidula fornicata

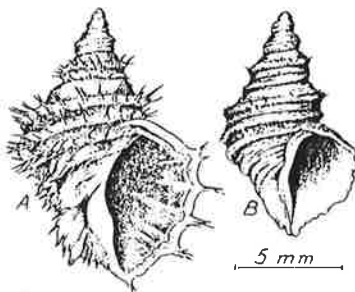
1 cm



Calyptraea chinensis



1 cm



Trichotropis borealis

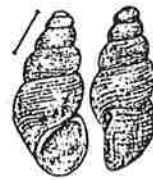
5 mm



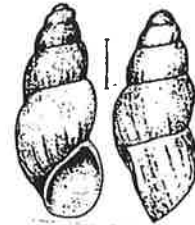
Onoba semicostata



Onoba aculeus



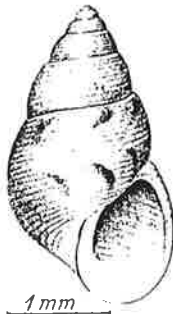
Onoba proxima



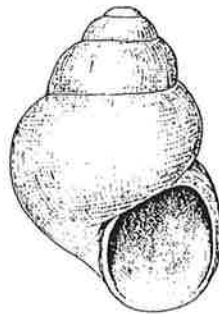
Onoba vitrea



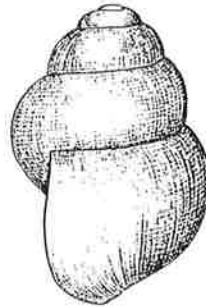
Cingula cingillus



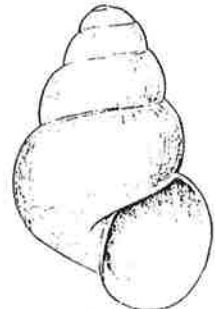
Alvania (Crisilla) semistriata



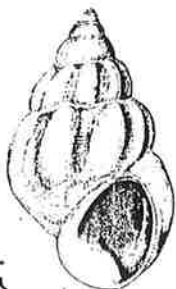
Putilla aldeni
Obfusella intersecta



Putilla turgida

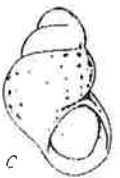


Barleeia unifasciata

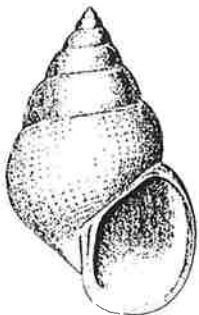


Pusillina pava

var. interrupta



Putilla pulcherrima



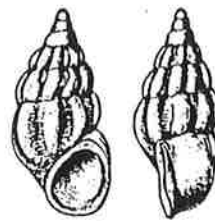
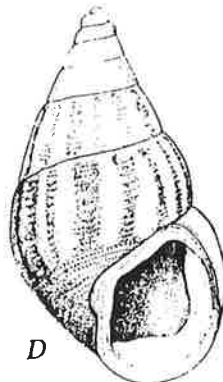
Rissoa porifera



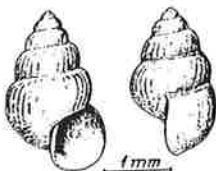
Rissoa rufilabrum



Rissoa lilacina



Rissoa guerini



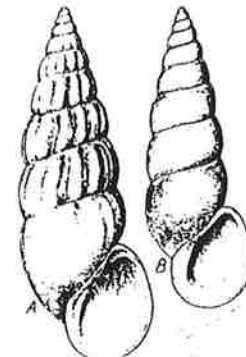
Pusillina inconspicua



Pusillina albella



Rissostomia membranacea



Rissostomia membranacea
var. octona



Rissostomia membranacea
var. labiosa

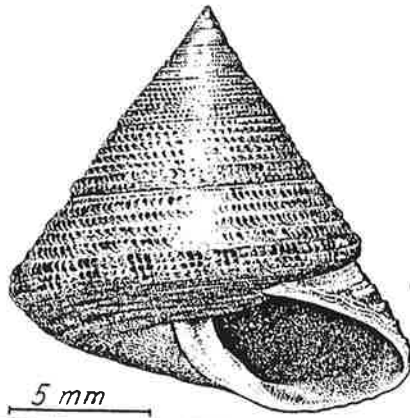


Pusillina albella sarsi





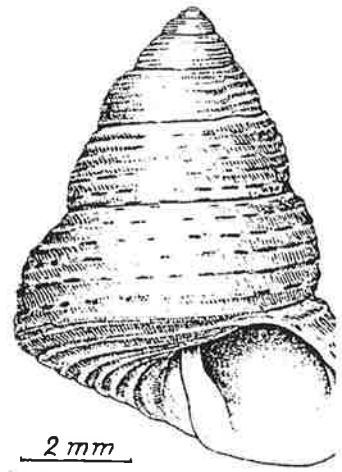
Monodonta lineata



Tujubinus clelandi



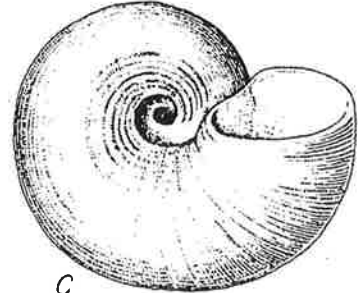
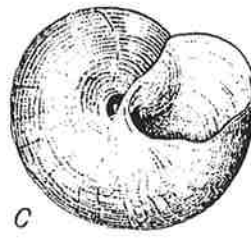
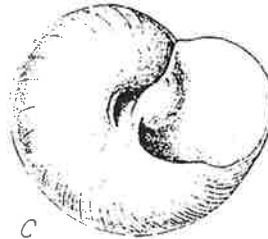
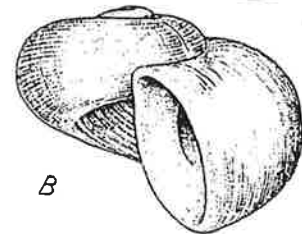
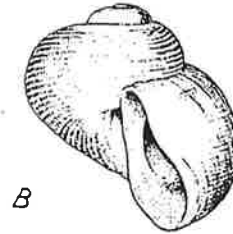
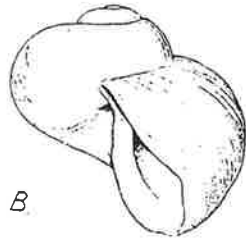
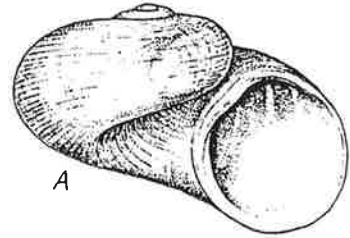
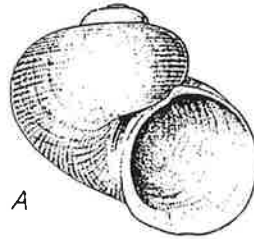
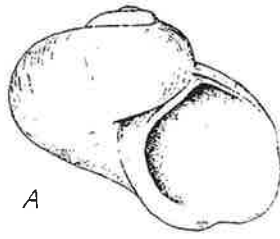
Tujubinus exasperatus



Tujubinus montagui



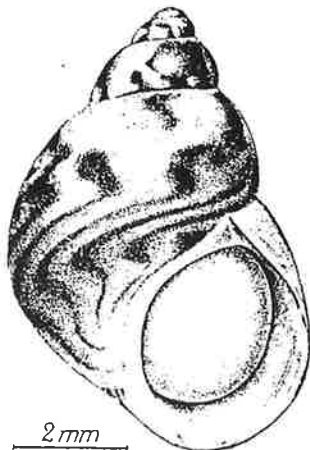
Tujubinus striatus



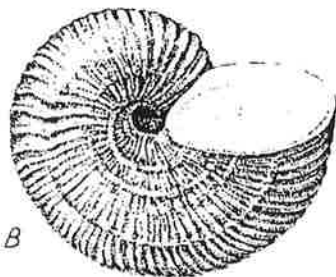
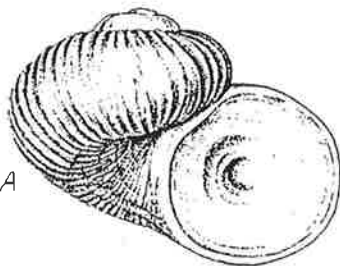
Skenea nitens

Skenea cutleriana

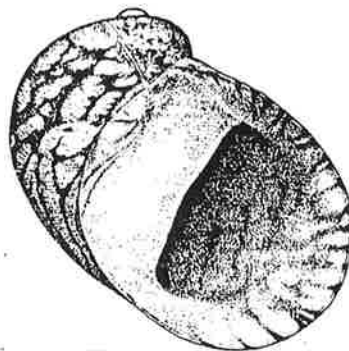
Skenea serpuloides



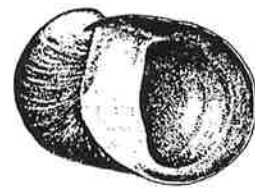
Tricolia pullus



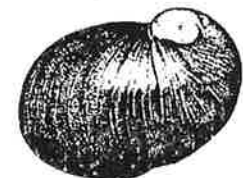
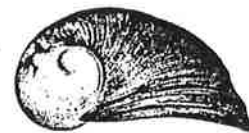
Malleia costulata

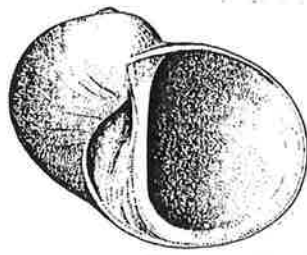


Theodoxus fluviatilis

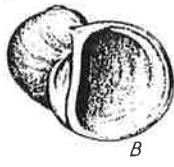


Theodoxus fluviatilis littoralis



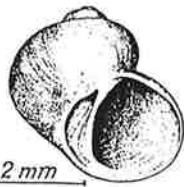


Lacuna pallidula

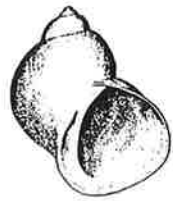
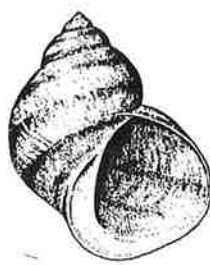


2 mm

Lacuna pava

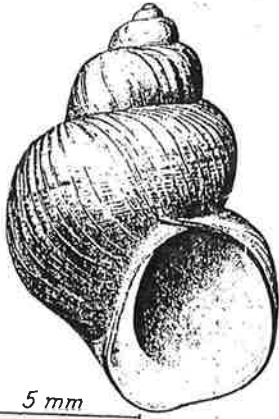


2 mm



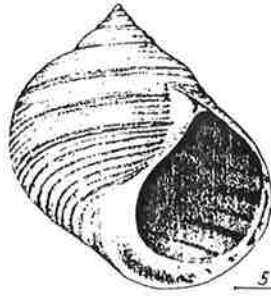
5 mm

Lacuna vineta



5 mm

Lacuna crassior

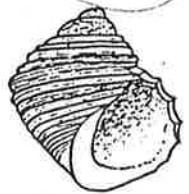


5 mm

Littorina littorea

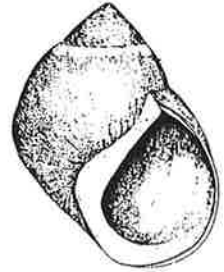


Littorina littorea
biconical outline



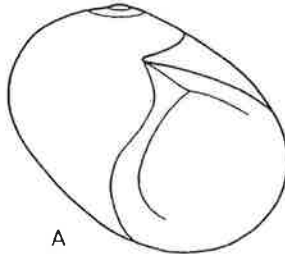
Littorivaga sp.
ovoconic outline

differences between juveniles



1 mm

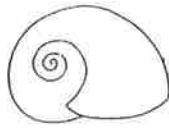
Littorina neritoides



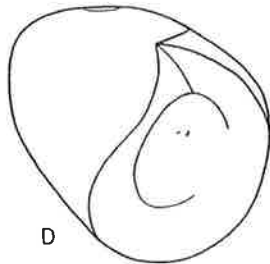
A



B



C



D



E

Fig. 205. A, B, C, Littorina obtusata Linnaeus; D, E, Littorina mariae Sacchi & Rastelli. A and D, apertural views of adult shells; B, apertural view of juvenile shell; C and E, apical views of juvenile shells.



5 mm

Littorina saxatilis



var. tenebrosa
? species



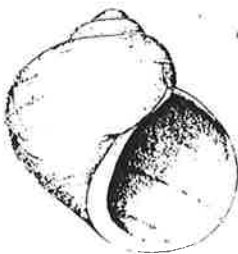
var. elata



var. similis

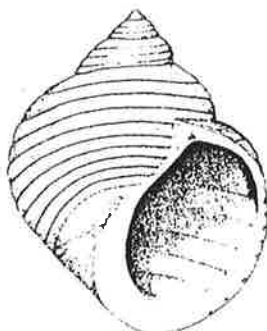


var. patula



0.5 mm

Littorina neglecta

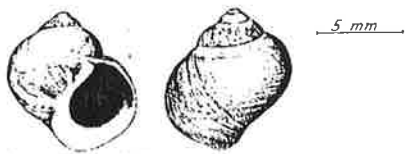


5 mm

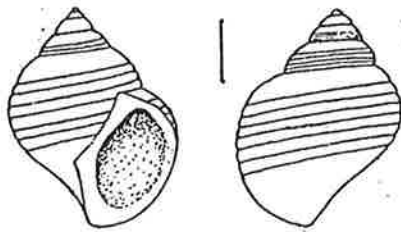
Littorina nigrolineata



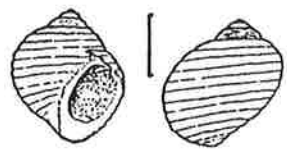
Littorina groenlandica
? variety of saxatilis



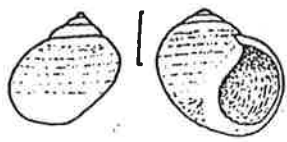
Littonna rudis
? subsp. or variety of saxatilis



var. rudissima



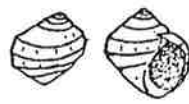
var. jugosa



var. attenuata



var. jugosoides



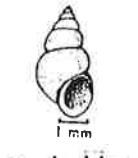
var. tenuis



var. rudissimoides



Hydrobia ulvae



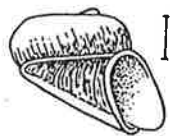
Hydrobia ventrosa



Potamopyrus jenkinsi



Truncatella subcylindrica



Tornus unisulcatus



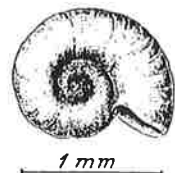
Tornus imperspicuus



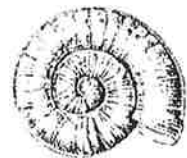
Tornus subcarinatus



Omalogyra atomus



Ammonicera rota



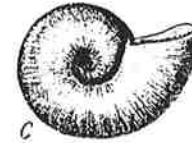
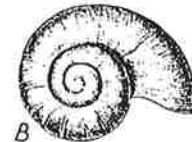
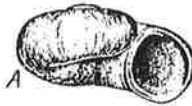
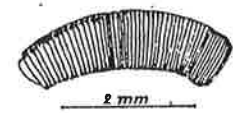
Circulus striatus



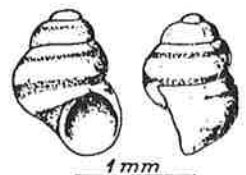
Caecum glabrum



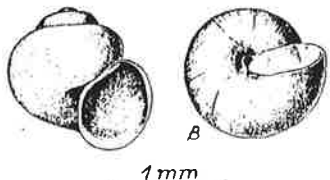
Caecum imperforatum



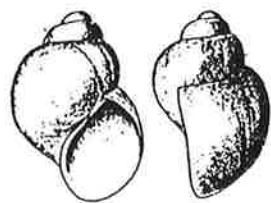
Skeneopsis planorbis



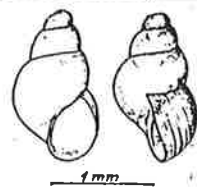
Cingulopsis fulgida



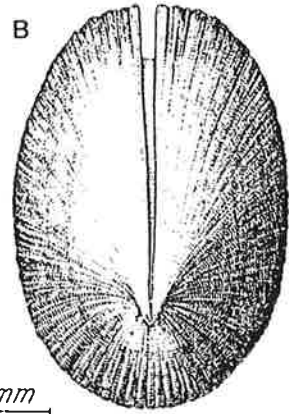
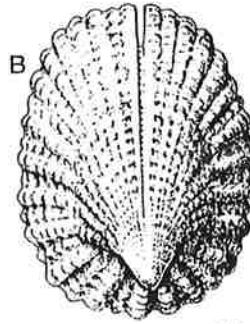
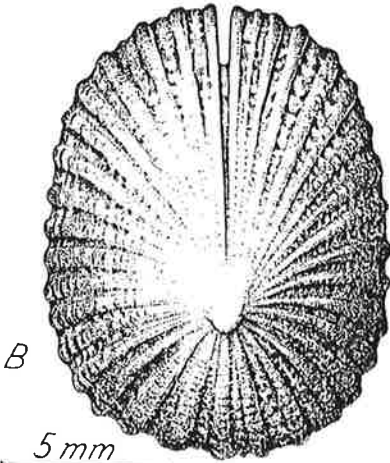
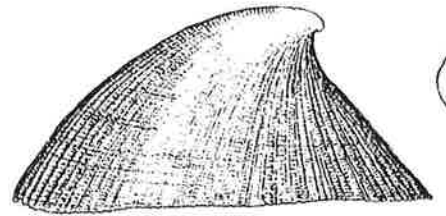
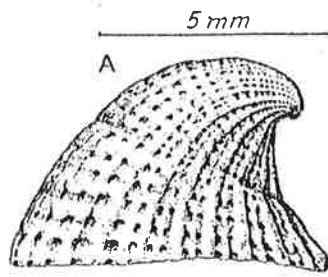
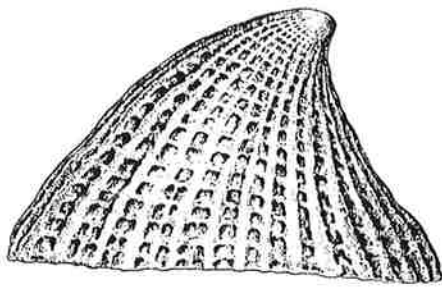
Rissoella globularis



Rissoella opalina



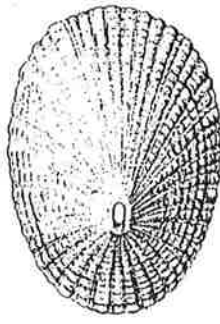
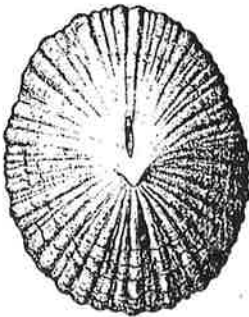
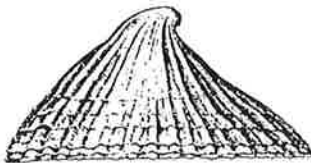
Rissoella diaphana



Emarginula fissura

Emarginula conica

Emarginula crassa

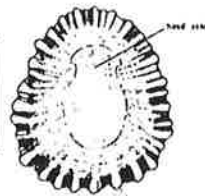
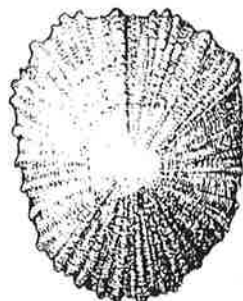
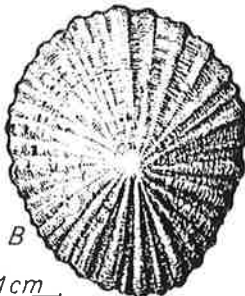


Puncturella noachina

Diodora graeca

Collisella tessulata

Acmaea virginea



Patella vulgata

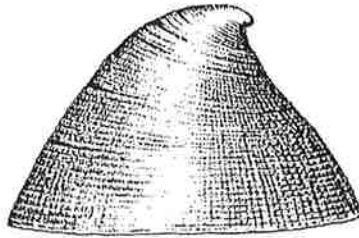
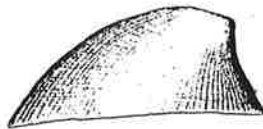
Patella aspera

Patella depressa

Helcion pellucidum

var. laevis





5 mm

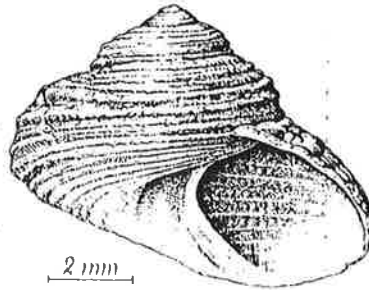
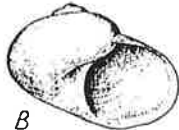
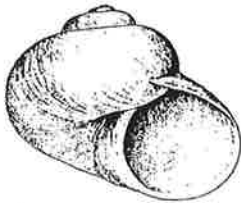
2 mm

1 mm

Lepta caeca

Lothia fulva

Propilidium exiguum

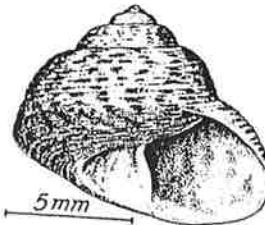
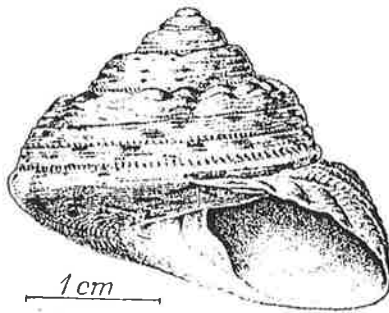
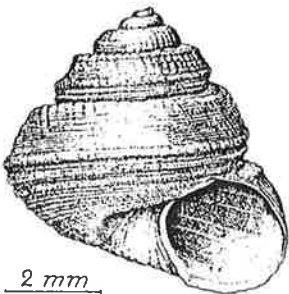


2 mm

2 mm

Margarites helycinus

Margarites groenlandicus



2 mm

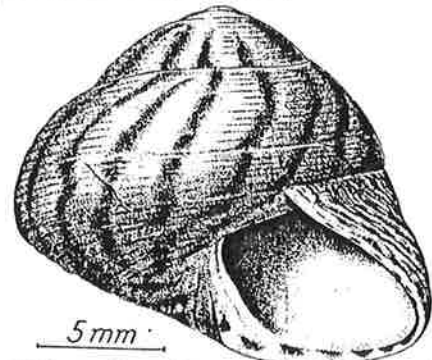
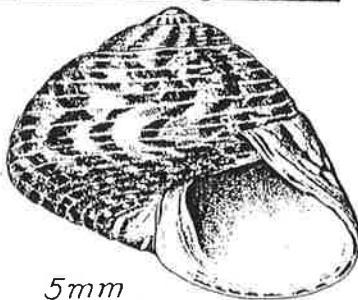
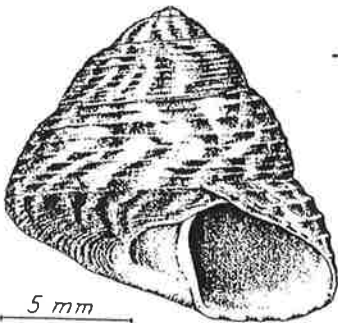
1 cm

5 mm

Solariella omabilis

Gibbula magus

Gibbula turida



5 mm

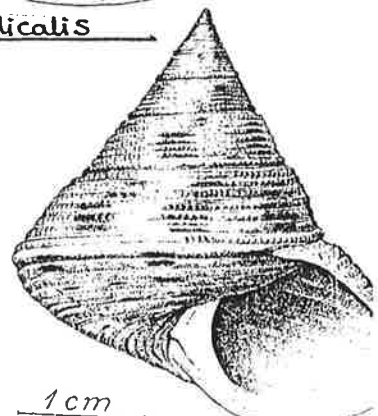
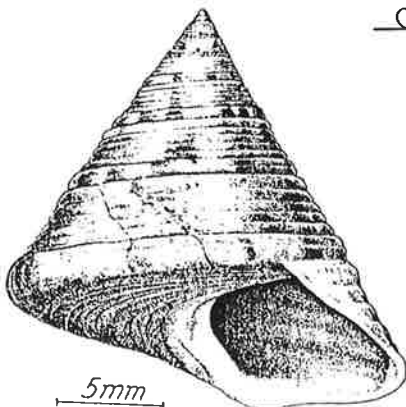
5 mm

5 mm

Gibbula cineraria

Gibbula pennanti

Gibbula umbilicalis



5 mm

5 mm

1 cm

Calliostoma occidentale

Calliostoma granulatum

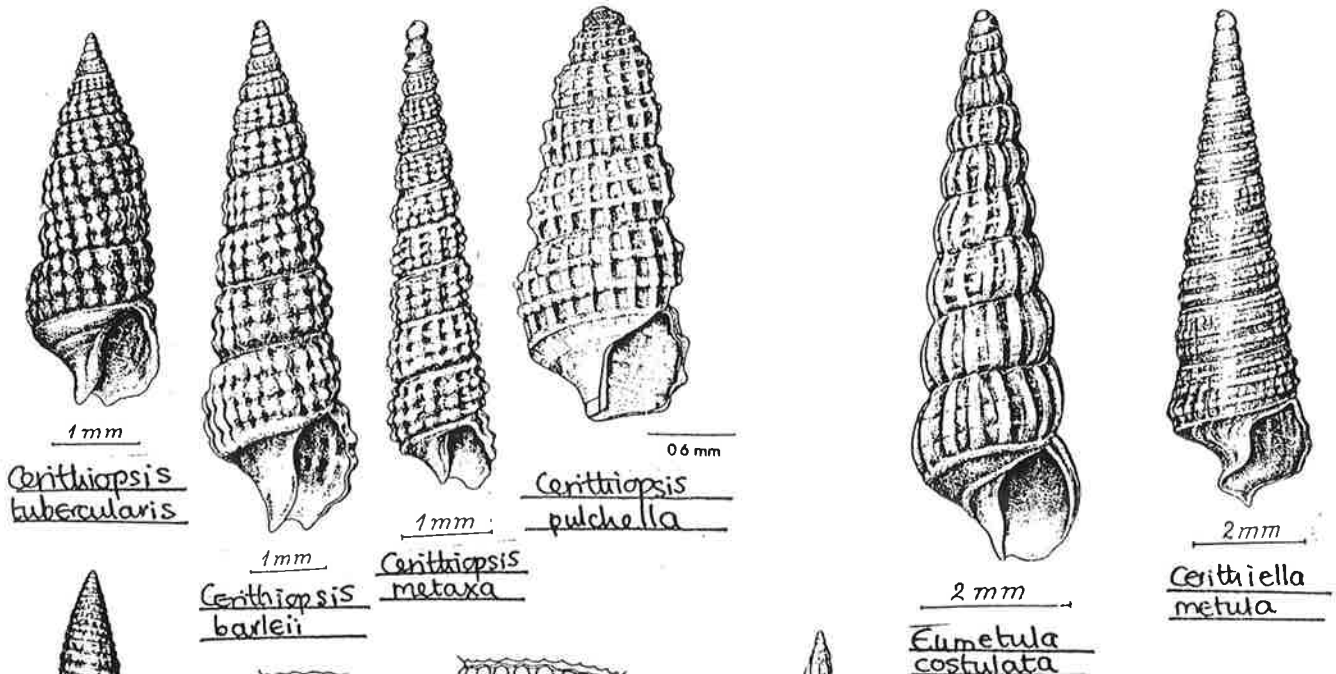


Fig. 271. Drawings of youngest part of last whorl of the shell of (left) *Triphora adversa* showing elongation of tubercles, and (right) *T. pallescens*, showing 3 rows of tubercles.

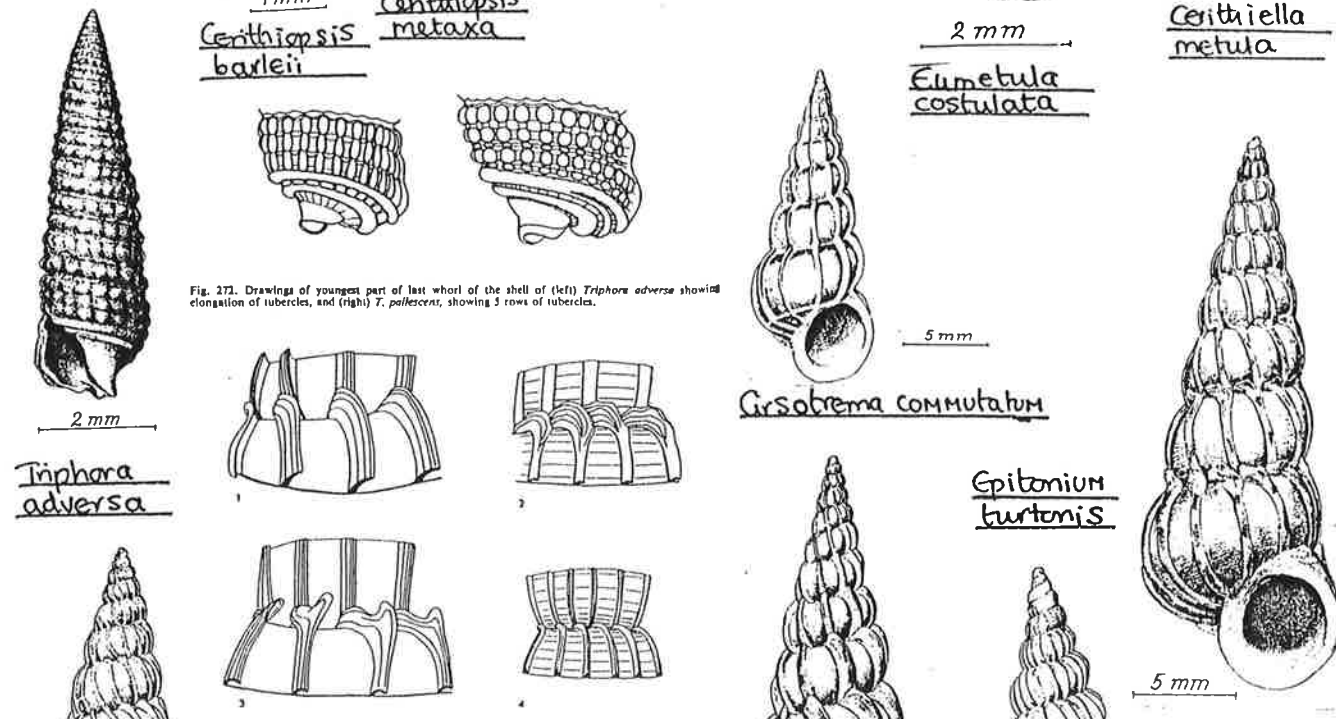
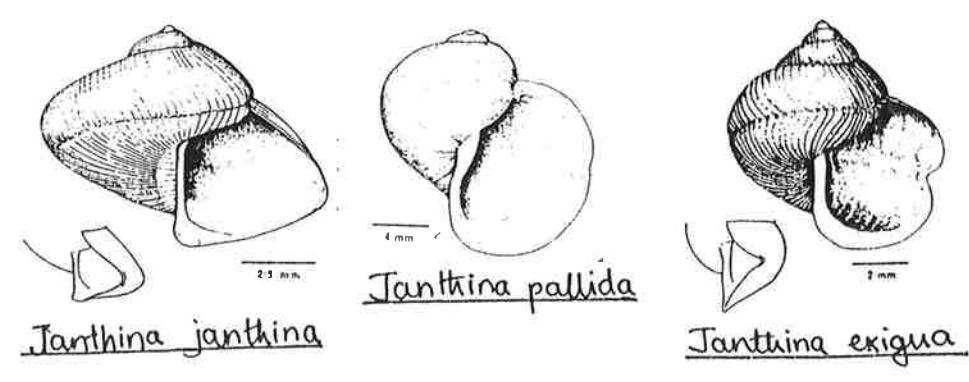
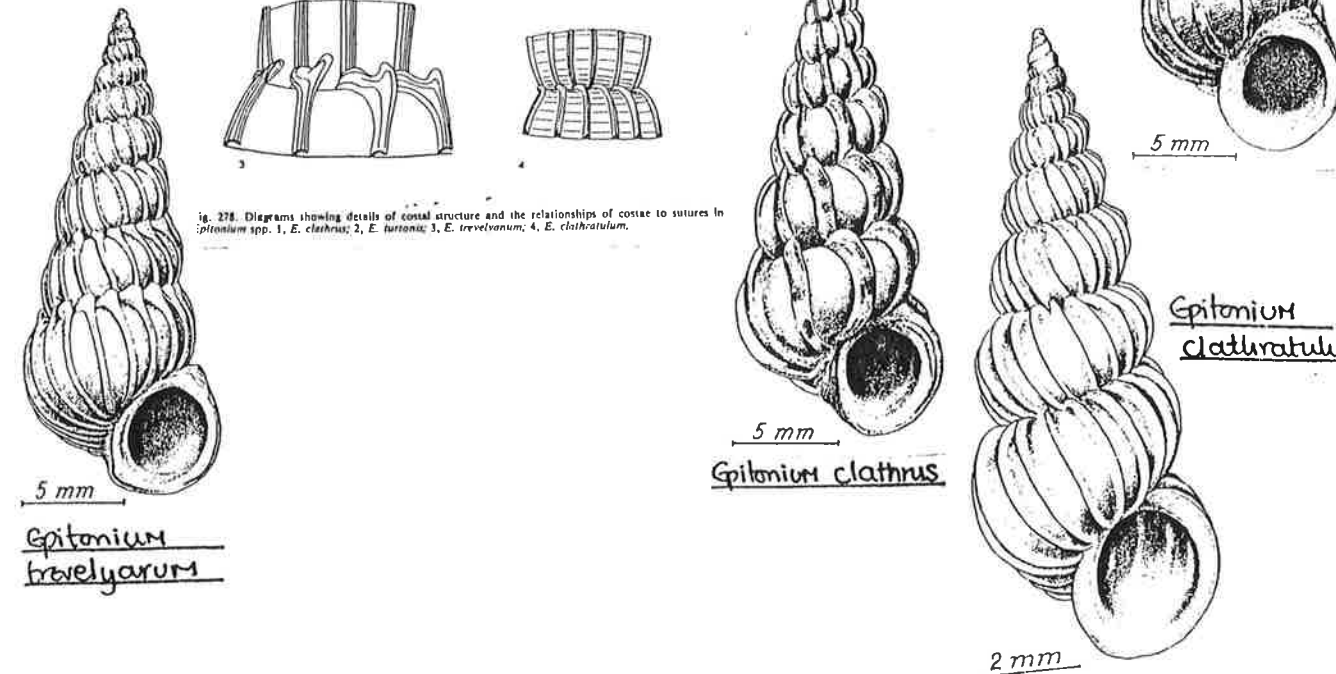


Fig. 272. Diagrams showing details of costal structure and the relationships of costae to sutures in *Epitonium* spp. 1, *E. clathrus*; 2, *E. turtonis*; 3, *E. trevelyanum*; 4, *E. clathratulum*.



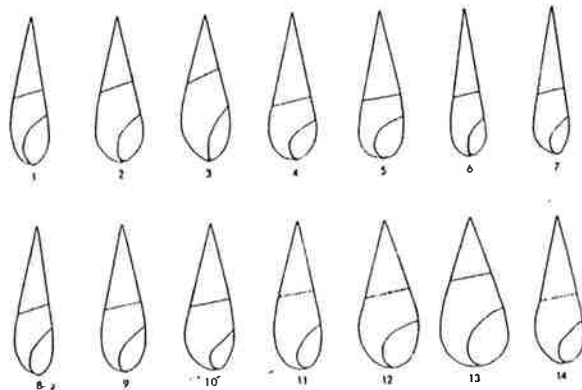
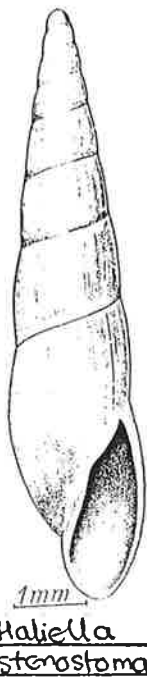
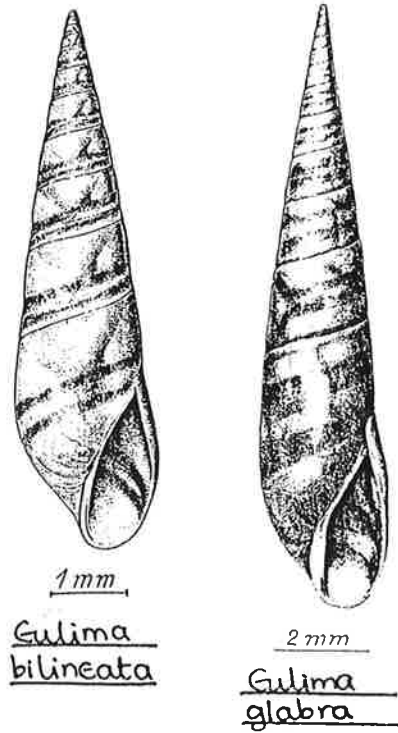
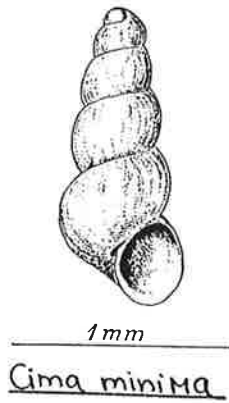
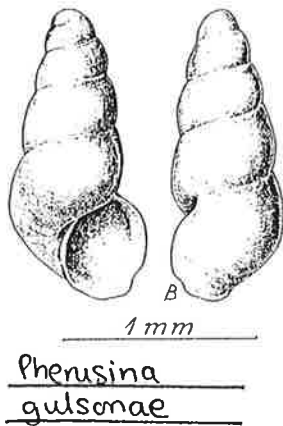
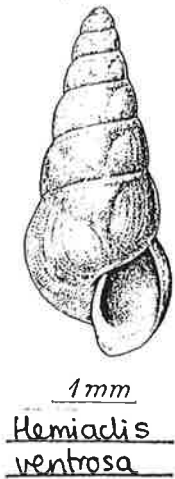
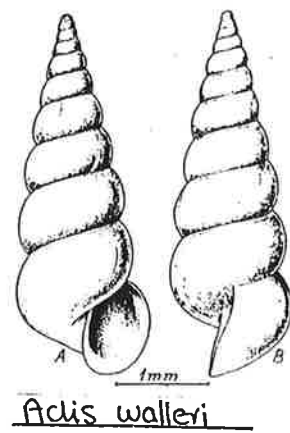
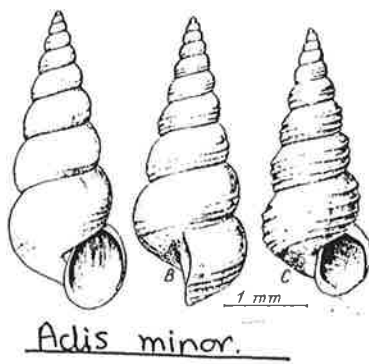
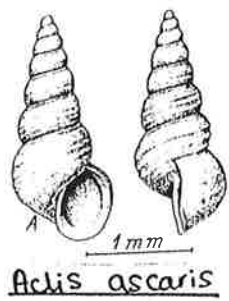
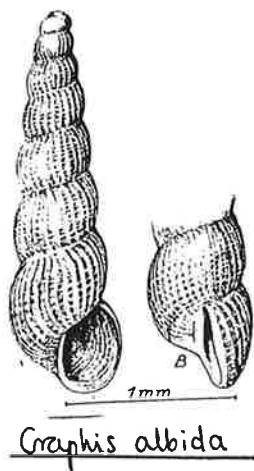


Fig. 306. Diagrammatic profiles of the shells of culimid species, all drawn to the same absolute height, to bring out differences in their relative proportions. The single line crossing the spire obliquely marks the adspiral limit of the last whorl, the basal oval the outline of the aperture. 1, *Eulima glabra*; 2, *E. bilineata*; 3, *Haliella stenostoma*; 4, *Melanella alba*; 5, *M. frielei*; 6, *M. frielei*; 7, *M. compactilis*; 8, *Polygireulima sinuosa*; 9, *P. monterosatoi*; 10, *Vitreolina philippii*; 11, *V. collinsi*; 12, *V. pestilana*; 13, *V. curva*; 14, *V. incurva* = *philippii*.

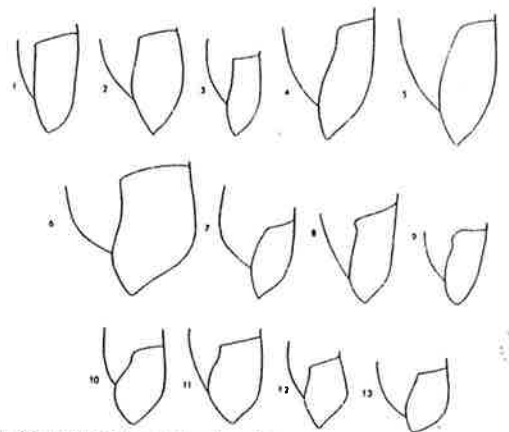
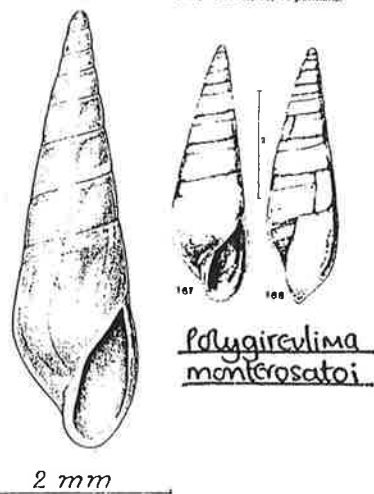
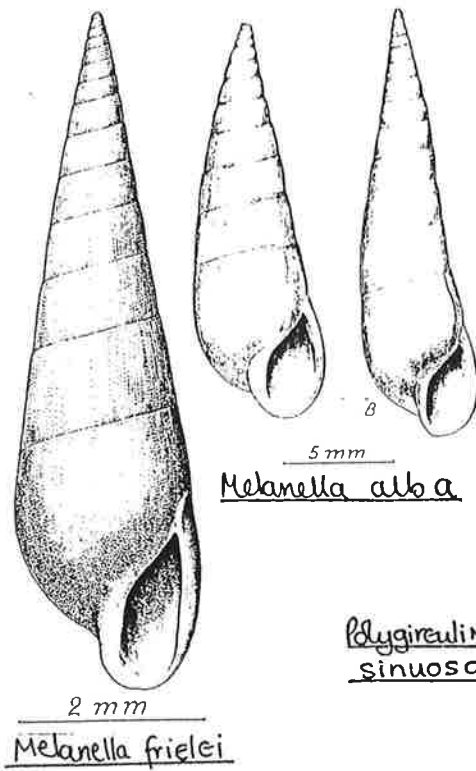
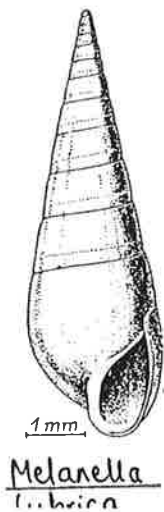
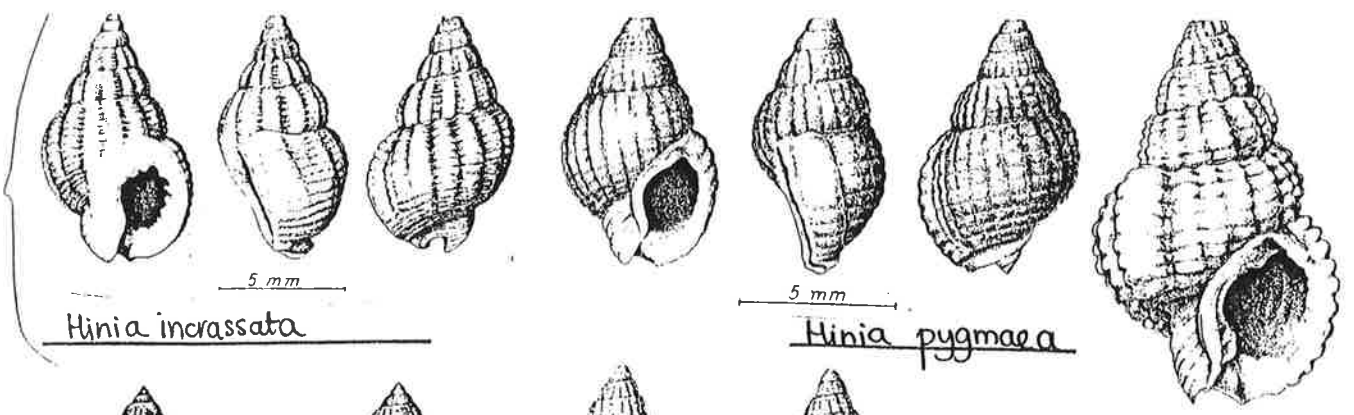
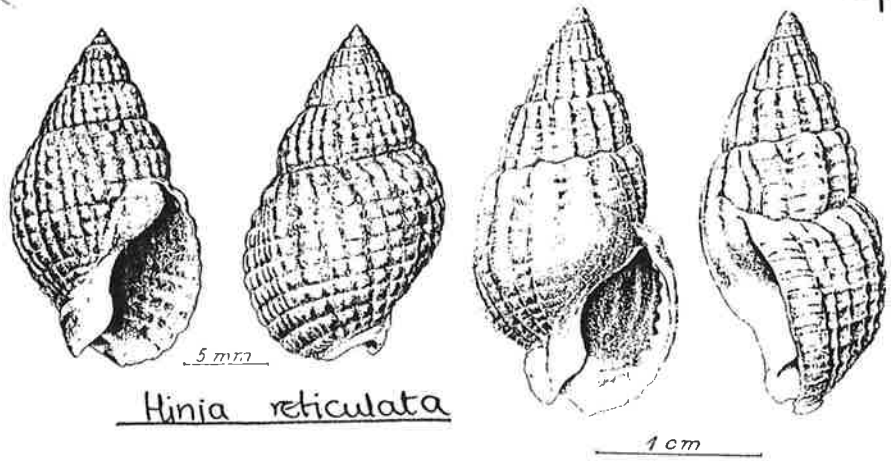


Fig. 307. Lateral views (exterior lucida outlines) of the base of the shell of culimid species to show the shape of the outer lip. 1, *Eulima glabra*; 2, *E. bilineata*; 3, *Haliella stenostoma*; 4, *Polygireulima sinuosa*; 5, *P. monterosatoi*; 6, *Melanella alba*; 7, *M. lubrica*; 8, *M. frielei*; 9, *M. compactilis*; 10, *Vitreolina philippii*; 11, *V. collinsi*; 12, *V. curva*; 13, *V. pestilana*.

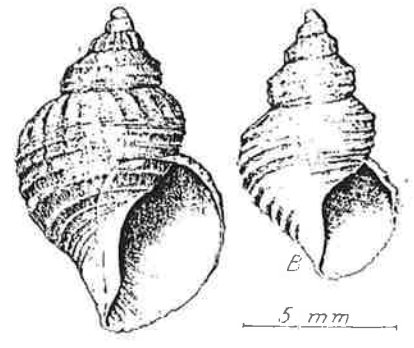


Hinia incrassata

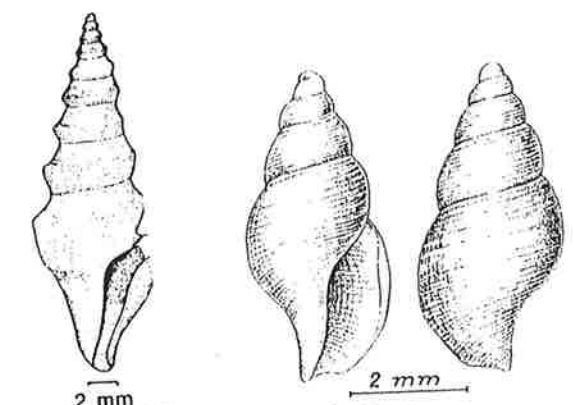
Hinia pygmaea



Hinia reticulata



Admete viridula

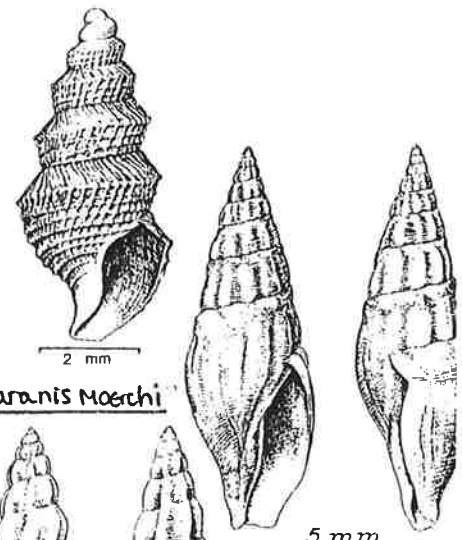


Spirobropis montrosato

Thesbia nana

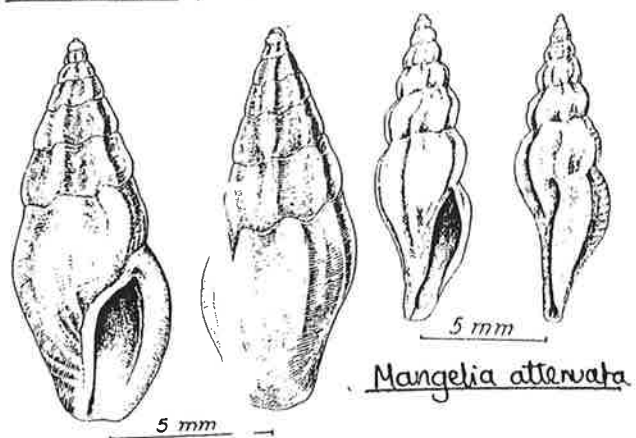


Taranis borealis



Taranis moerchi

Bela pavisiana

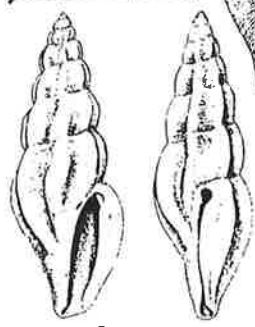


Mangelia attenuata

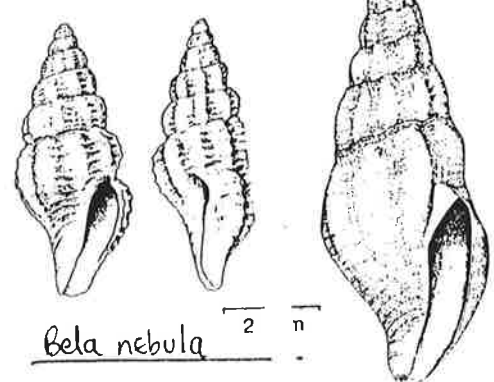
Haedropleura sep. inularis



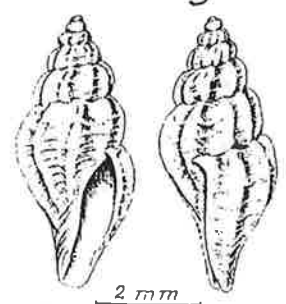
Mangelia brachystoma



Bela coarctata



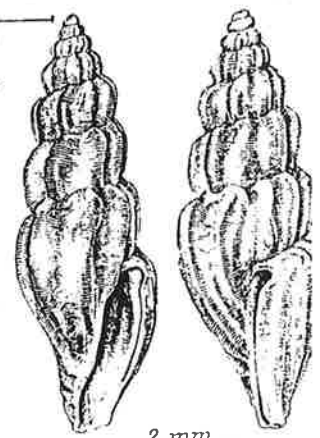
Bela nebula



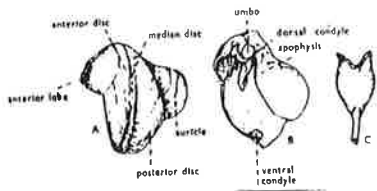
Bela rugulosa



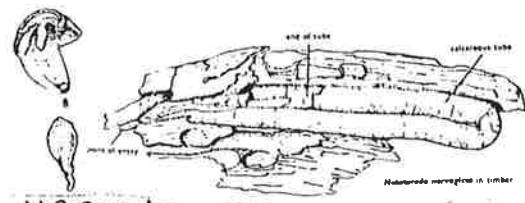
Bela costulata



Bela smithii



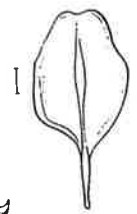
Teredo navalis



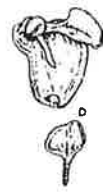
Nototeredo norvegica



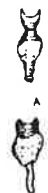
Psiloteredo megotara



Teredora malleolus



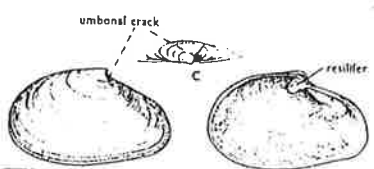
Teredora malleolus



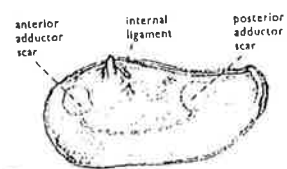
Lyrodus pedicellatus



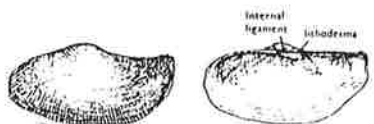
Bankia fimbriatula



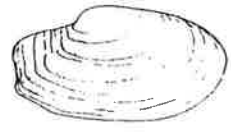
Cochloidesma praetense



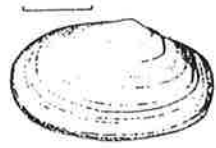
Pandora inequivalvis



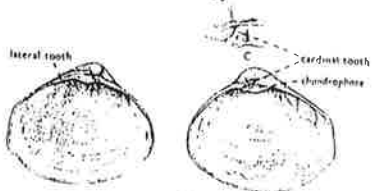
Lyonsia norvegica



Thracia phaseolina



Thracia villosiuscula



Poromya granulata



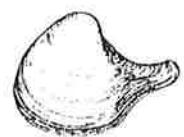
Thracia pubescens



Thracia convexa



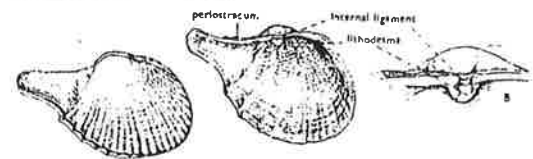
Cuspidaria abbreviata



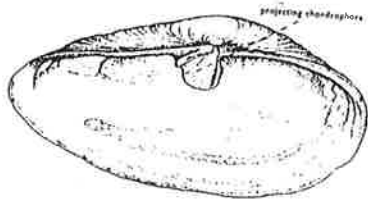
Cuspidaria cuspidata



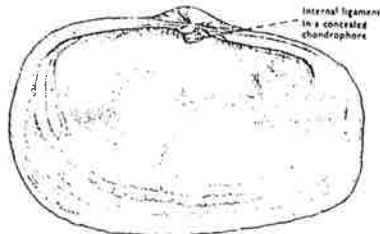
Cuspidaria rostrata



Cardiomya costellata



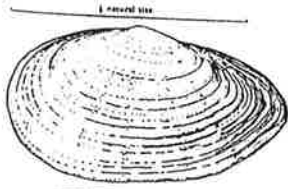
Mya arenaria



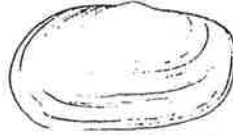
Mya truncata



Sphenia binghami



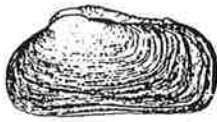
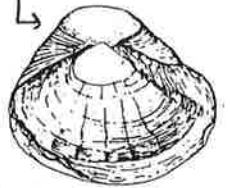
Hiattella arctica



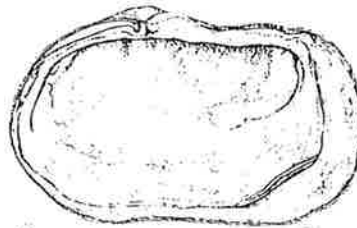
Panomya arctica



Corbula gibba ↑



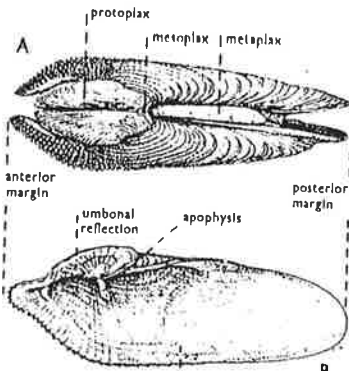
Hiattella arctica



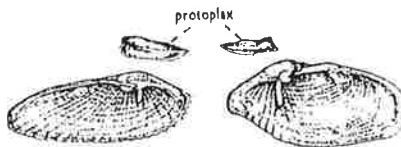
Panomya arctica



Saxicavella jeffreysi

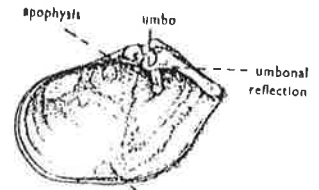


Pholas dactylus



Barnea candida

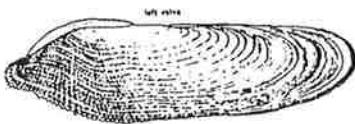
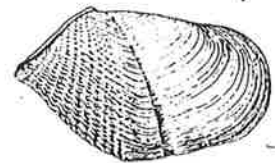
Barnea parva



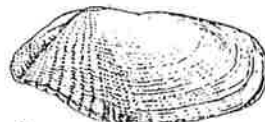
Zirfaea crispata



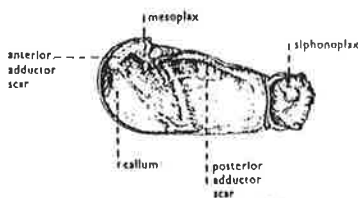
Barnea candida



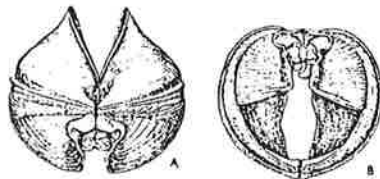
Pholas dactylus



Barnea parva



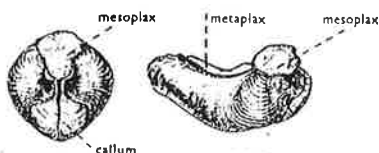
Pholadidea loscombiana



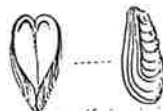
Xylophaga praestans



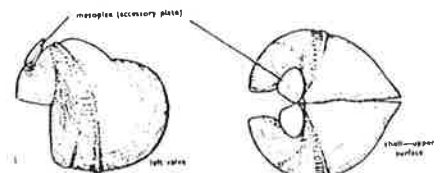
Xylophaga dorsalis

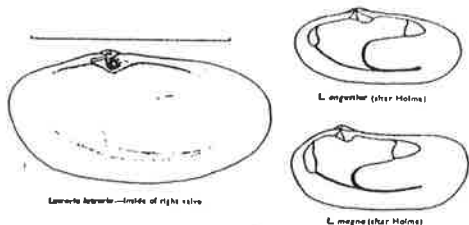


Martesias striata



Gastrochaenia dubia

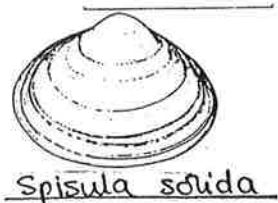




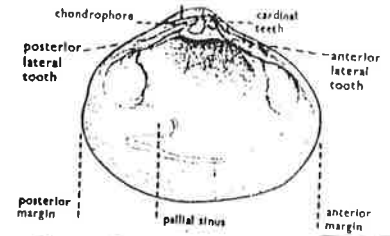
L. longior (after Holmes)

L. magna (after Holmes)

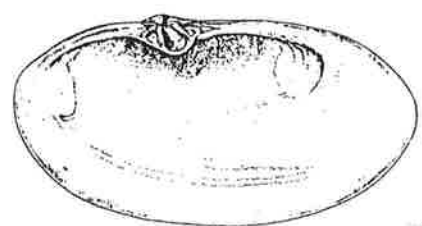
L. magna (after Holmes) - inside of right valve



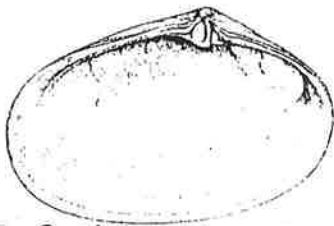
Spisula solida



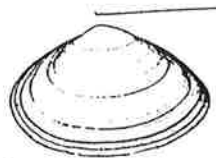
Spisula solida



Lutraria lutraria



Enclia castanea



Spisula elliptica

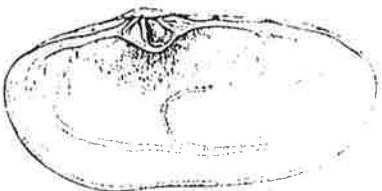


A

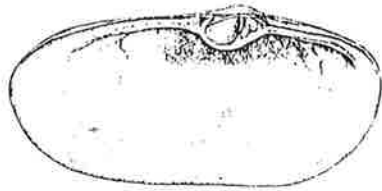


B

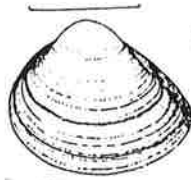
Spisula elliptica



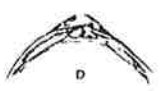
Lutraria angustior



Lutraria angustior

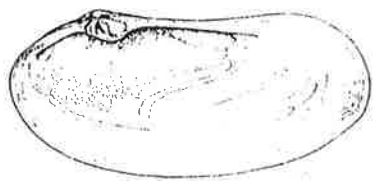


C



D

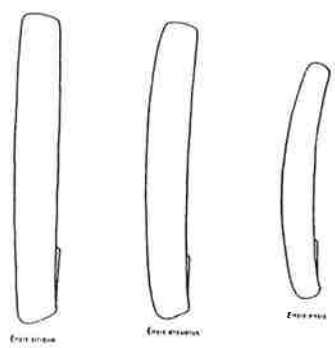
Spisula subtruncata



Lutraria magna



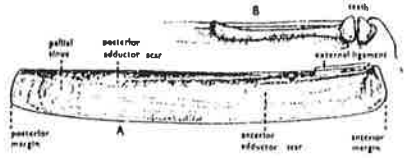
Ensis siliqua



Ensis siliqua

Ensis siliqua

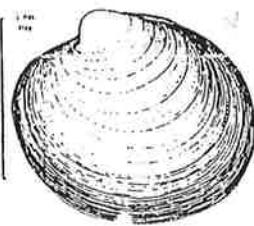
Ensis siliqua



Ensis arcuatus



Ensis ensis



Arctica islandica



Arctica islandica

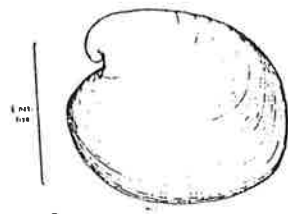


Solen marginatus

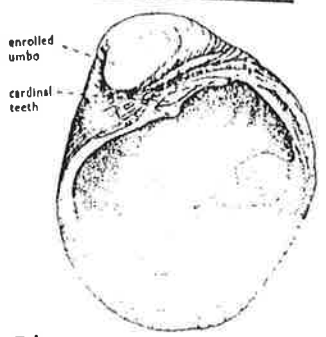


Callinus pellucidus

Proxus



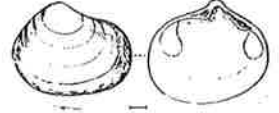
Glossus humanus



Glossus humanus



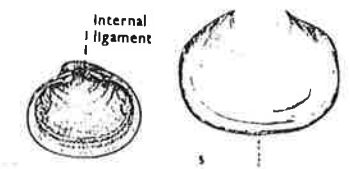
Lasaea nebra



Kellia suborbicularis



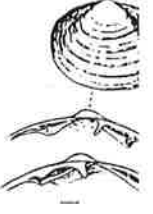
Lepton squamosum



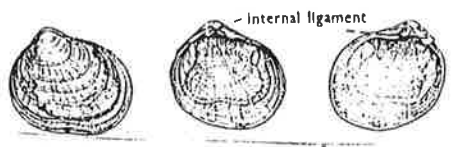
Erycina nitida



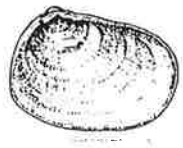
Kellia subtrigona



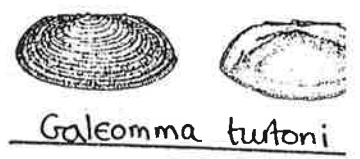
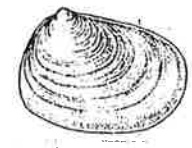
Lepton nitidum



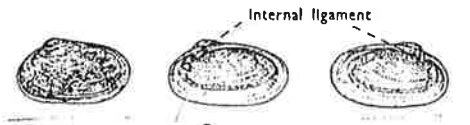
Montacuta substriata



Devonia perrieri



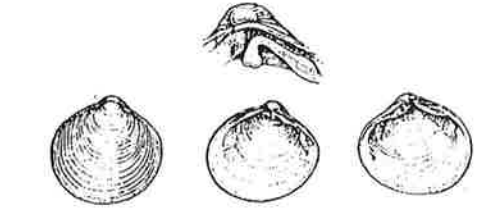
Galeomma tutoni



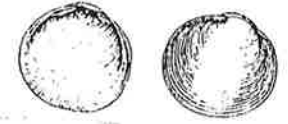
Tellmya ferruginosa



Mysella bidentata



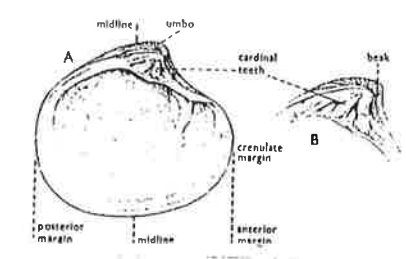
Neolepton sulcatulum



Arculus sykesi



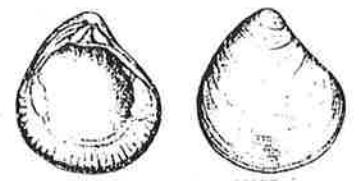
Epilepton clarkiae



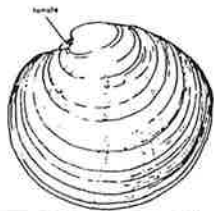
Astarte sulcata



Astarte sulcata



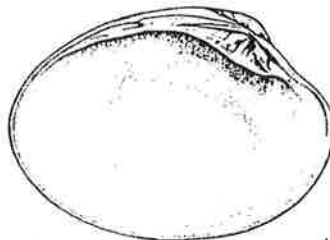
Goodallia triangularis



Dosinia exoleta



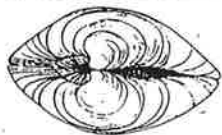
Dosinia lupinus



Callista chione



Inus inus



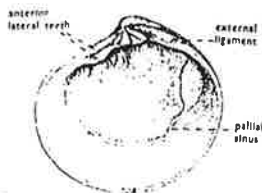
Gaultia minima



Tufonia minuta



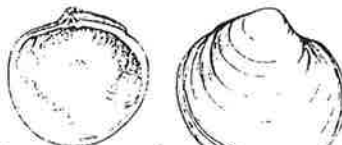
Timoclea ovata



Gaultia minima



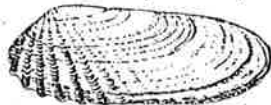
Petricola pholadiformis



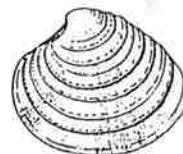
Mysia undata



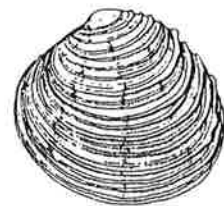
Gaultia minima



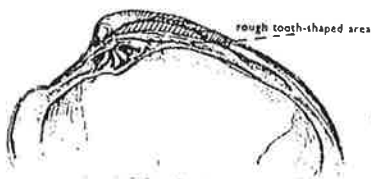
Petricola pholadiformis



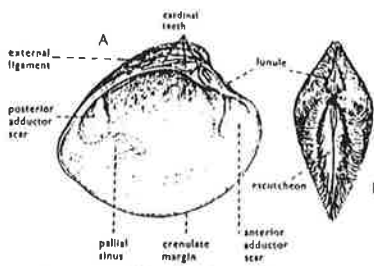
Clausinella fasciata



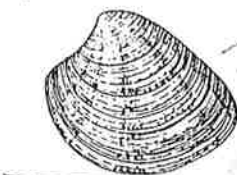
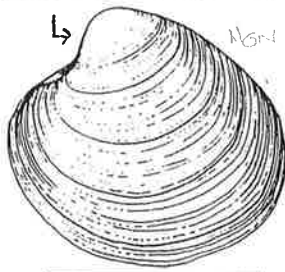
Circumphalus casina



Mercenaria mercenaria



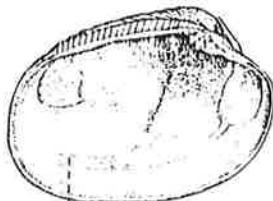
Chamelea gallina
(Venus striatula)



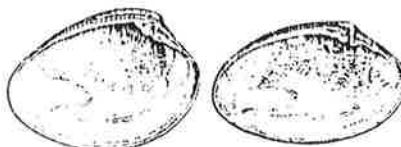
Chamelea gallina



Tapes decussatus



Venus nigris



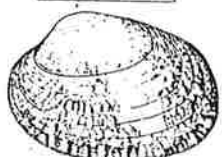
Paphia aurea



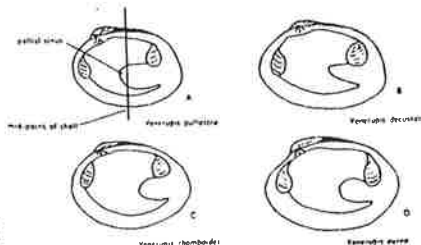
Paphia thombrides

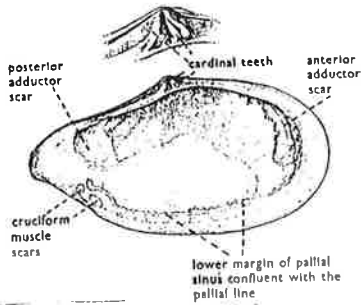


Tapes decussatus

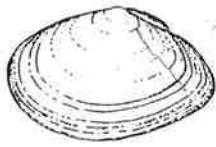


Venus nigris

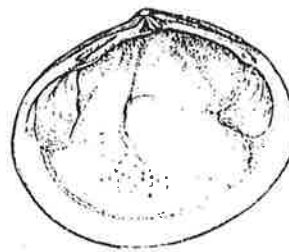




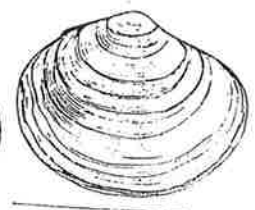
Angulus squalidus



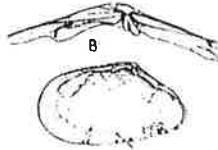
Angulus tenuis



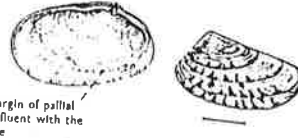
Arca pagia crassa



Fabulina fabula

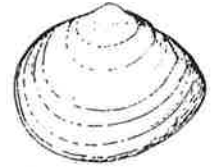


Moerella donacina



lower margin of pallial sinus confluent with the pallial line

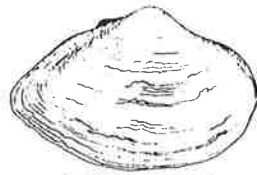
Moerella pygmaea



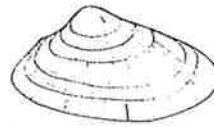
Macoma balthica



Gastrea fragilis



Gastrea fragilis



Donax vittatus



Gari depressa



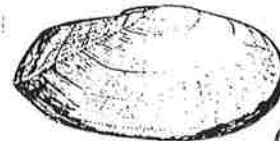
Gari depressa



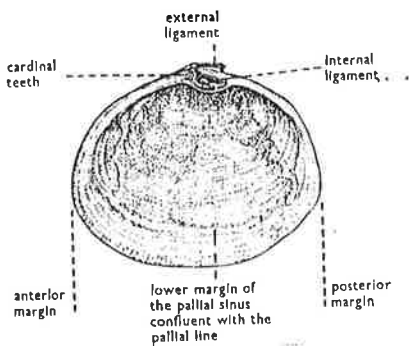
Gari costulata



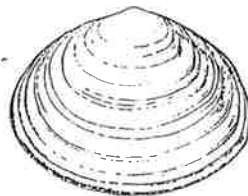
Gari tellinella



Gari fervensis



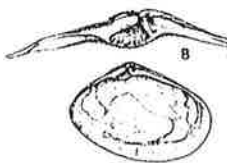
Scrobicularia plana



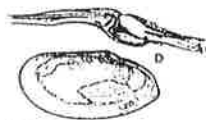
Scrobicularia plana



Abra longicallus



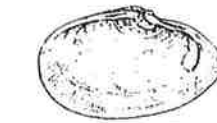
Abra alba



Abra prismatica



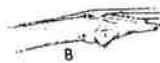
Abra tenuis



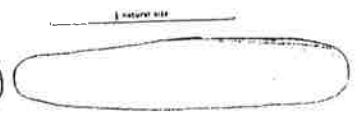
Abra nitida



Solecurtus scopula

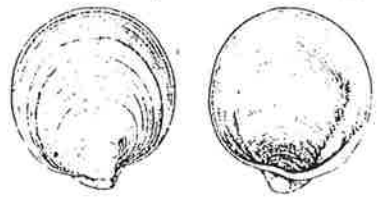


Pharus legumen

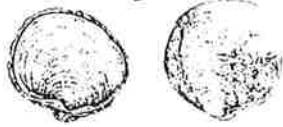


Pharus legumen

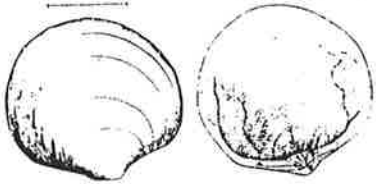
Thyasira crawlinensis



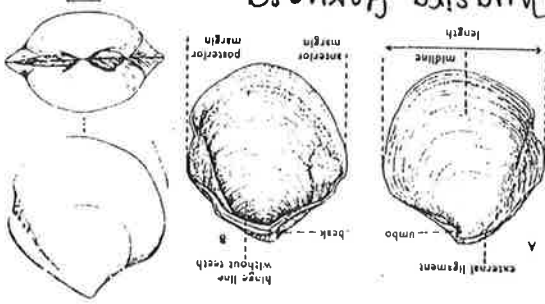
Thyasira ferruginea



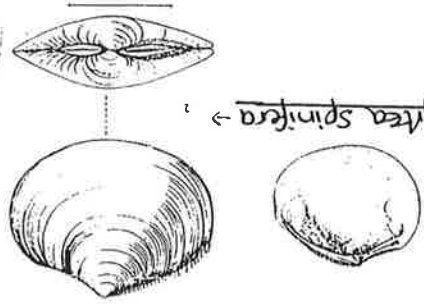
Diplodomita rotundata



Thyasira flexuosa



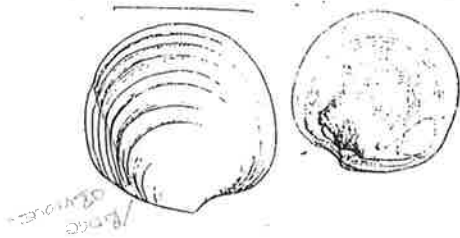
Myrtea spinifera



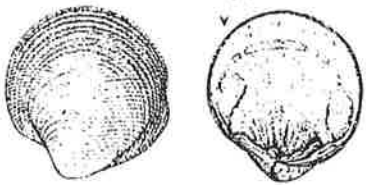
Lanipes lucinalis



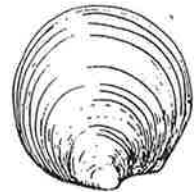
Lucinoma borealis



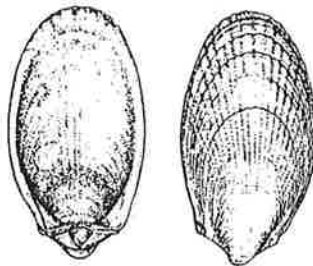
Lucinella divaricata



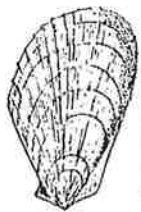
Lanipes lucinalis



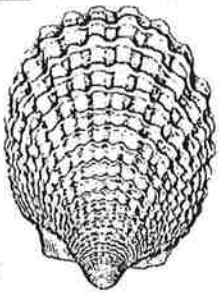
Limachula subauriculata



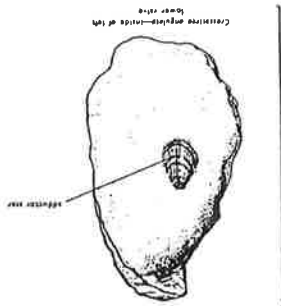
Limaria hians



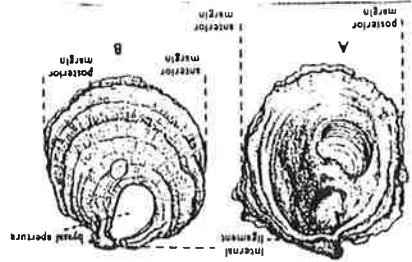
Notolimea sarsi



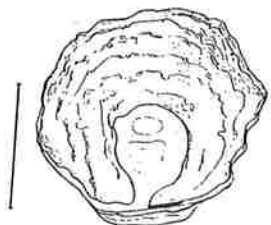
Crassostrea angulata



Ostrea edulis

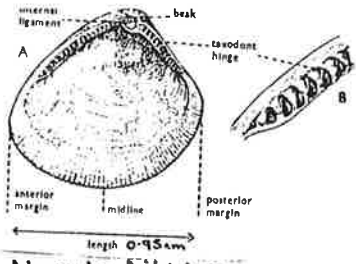


Armania ephippium

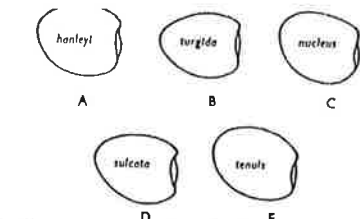


Pododemus squamula

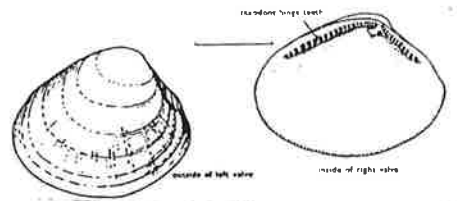




Nucula nitidosa
(Nucula turgida)



5 species of Nucula
Nucula tenuis → Nuculoma tenuis



Nucula sulcata



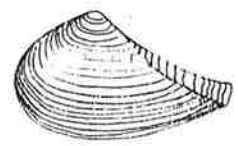
Portlandia philippiana



Portlandia lucida



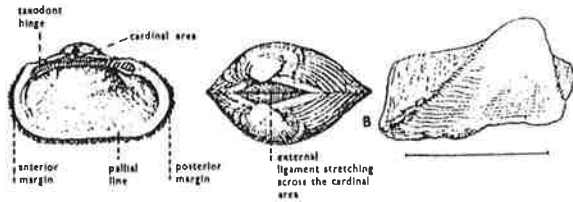
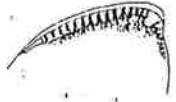
Portlandia pusilla



Nuculana minuta



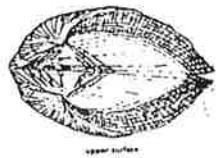
Nucula nucleus



Stiarca lactea



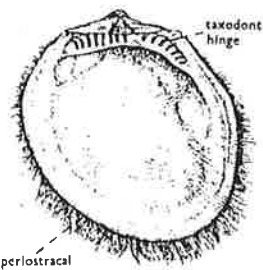
Arca tetragona



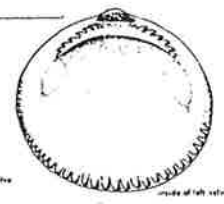
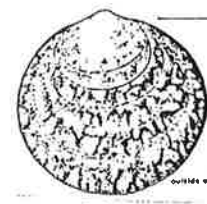
Arca tetragona



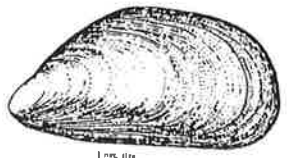
Bathyarca pectunculoides



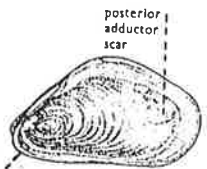
Limopsis aurita



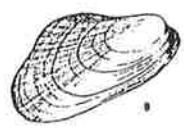
Glycymeris glycymeris



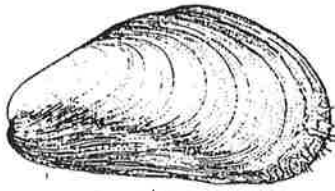
Mytilus edulis



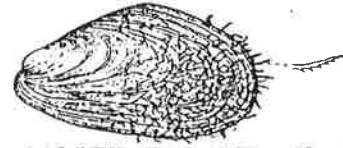
Modiolus barbatus



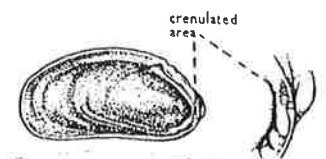
Modiolus adriaticus



Modiolus modiolus



Modiolus barbatus



Modiolula pharesina

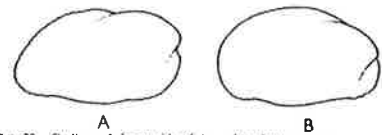
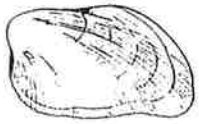
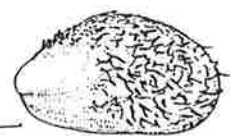


FIG. 20. Outlines of the outside of the right valves of (a) Musculus marianus and (b) Musculus discors, both specimens from Oban, Argyllshire, real length of each about 1" (1.59 cms.).



Modiolarca tumida



Modiolula pharedina

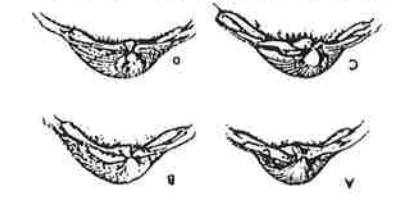


Musculus discors

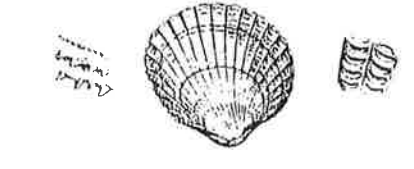
Distinct
with
scars
in Rang.

= Musculus subpictus
(1874) MOR

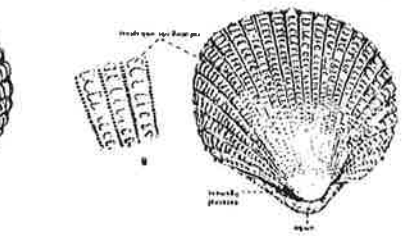
Fig. 48. Hinge line of the right valve of four species of Cardidae: (a) *Cardium edule*, specimen from Whitstable, Kent; (b) *Parvicardium minimum*, specimen from Horn I., Channel Is.; (c) *Parvicardium papillosum*, specimen from Dunwich, Suffolk; (d) *Parvicardium erigium*, specimen from Oban, Argyllshire.



Parvicardium ovale



Parvicardium minimum



Parvicardium papillosum

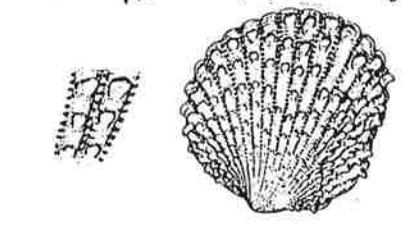
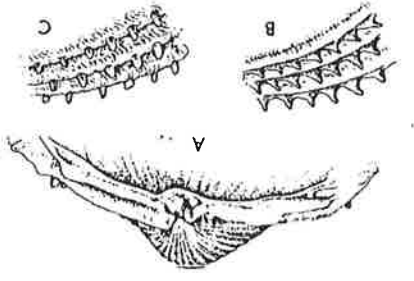
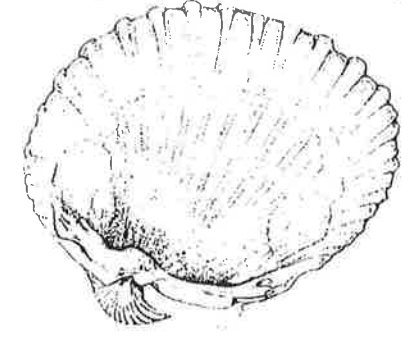


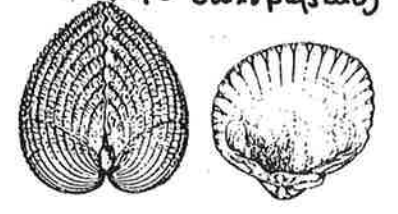
Fig. 49. (a) Hinge line of the left valve of *Acanthocardia aculeata*, specimen from Slapton, Devon; (b) sculpture of the radiating ribs of *Acanthocardia aculeata*, specimen from Jersey, Channel Is.; (c) sculpture of the radiating ribs of *Acanthocardia tuberculata*, specimen from Swanage, Dorset.



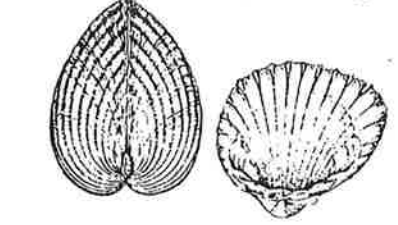
Acanthocardia tuberculata



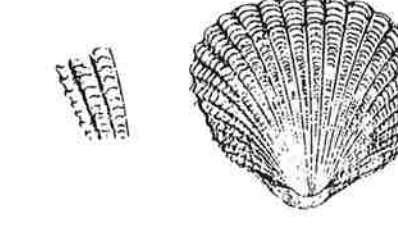
Cerastoderma edule



Cerastoderma glaucum



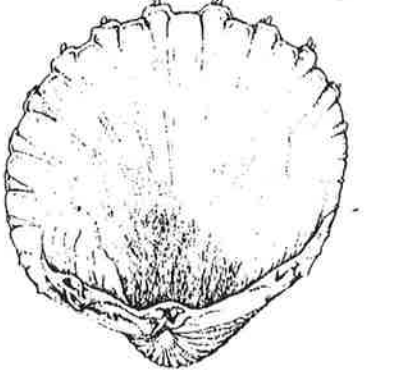
Parvicardium scabrum



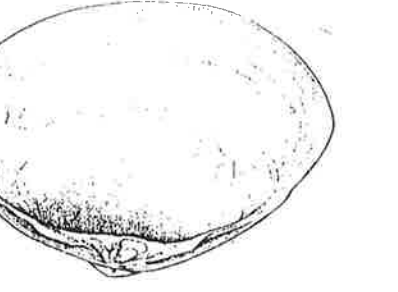
Parvicardium erigium



Acanthocardia edinata



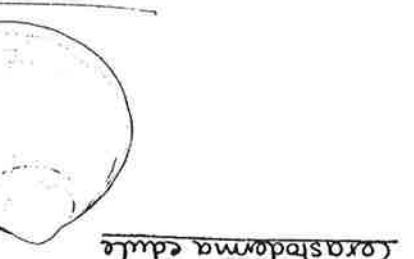
Machra glauca



Corastoderma edule



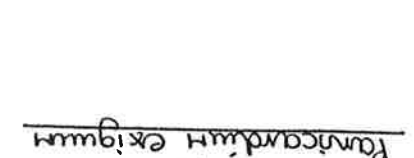
Corastoderma crassum



Parvicardium erigium



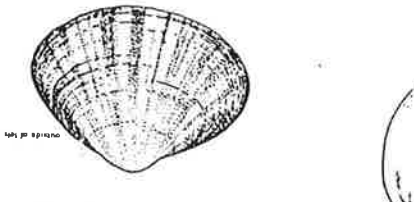
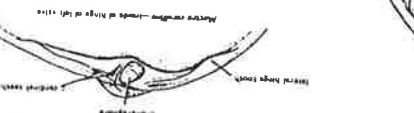
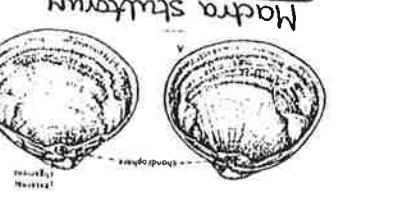
Acanthocardia edinata

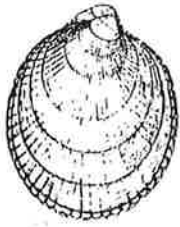


Machra stultorum

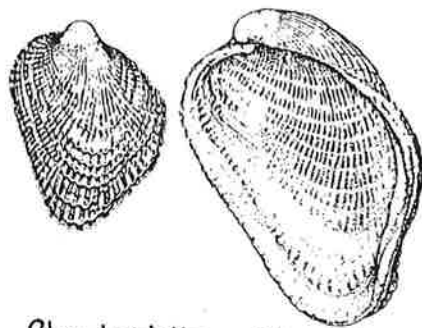


Machra costalis

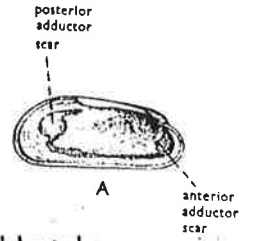




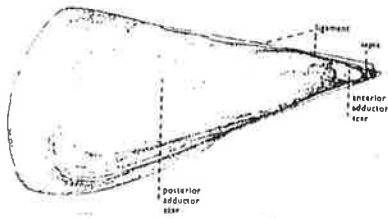
Crenella deussata



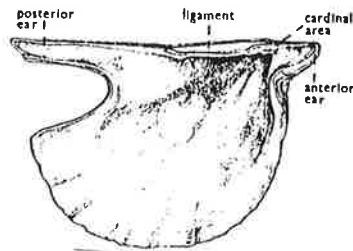
Rhomboidella prideauxi



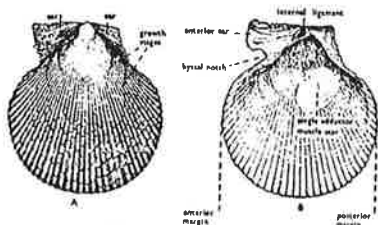
Idasola simpsoni



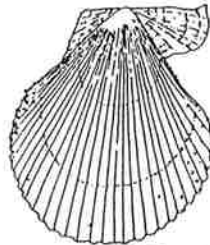
Abina fragilis



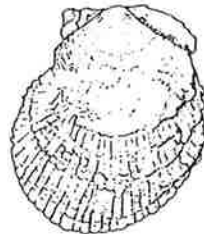
Pteria hirundo



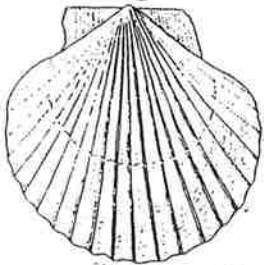
Chlamys nivea



Chlamys varia



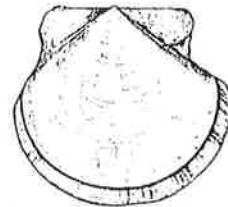
Chlamys distorta



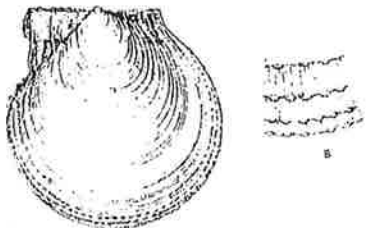
Aequipecten opercularis



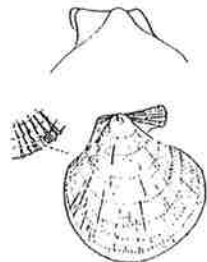
Pseudamussium septemradiatum



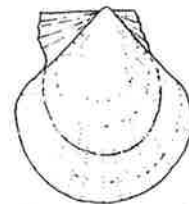
Pallidum simile



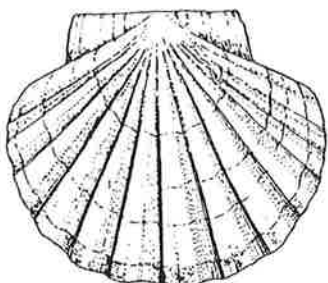
Delectopecten vibreum



Pallidum striatum



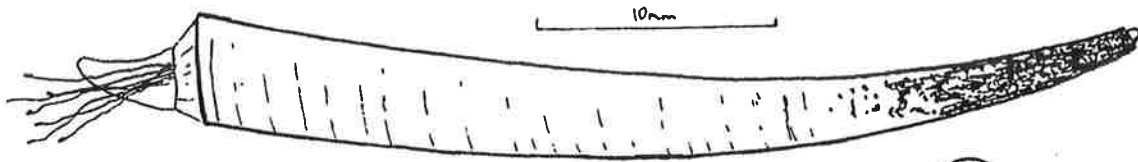
Pallidum tigrina



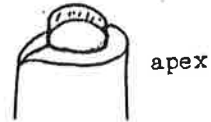
Pecten maximus

SOME N.E. ATLANTIC SCAPHOPODS

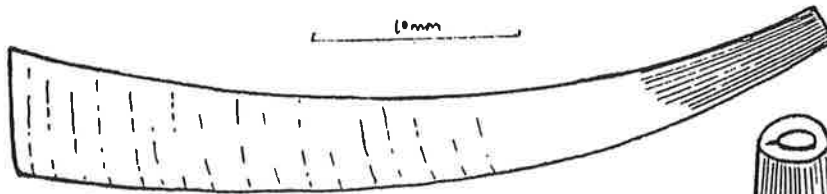
(Order Dentalioida)



Antalis entalis (Linné 1758)

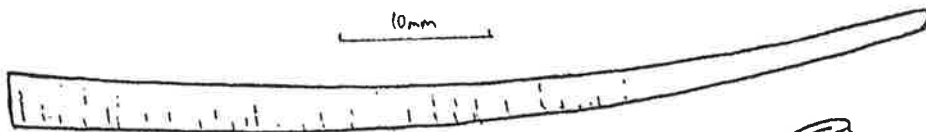


apex



Antalis vulgare (da Costa 1778)

apex

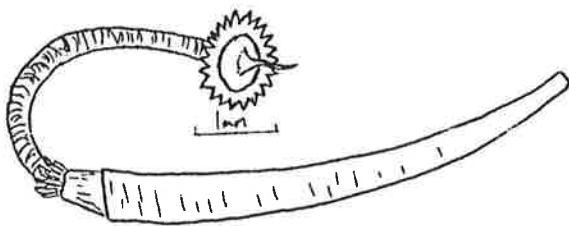


Antalis agile (M.Sars 1872)



apex

(Order Siphonodentalioida)



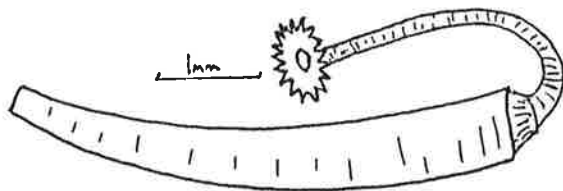
Siphonodentalium (Pulsellum) lofotense
M.Sars 1865



Entalina quinquangularis
(Forbes 1843)



Siphonodentalium lobatum
(G.B.Sowerby 1860)

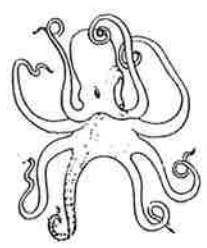


Siphonodentalium (Pulsellum) affine
M.Sars 1865

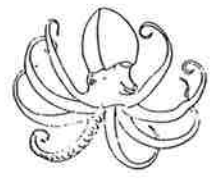


Gadila jeffreysii
(Monterosato 1875)

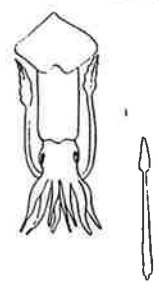
Otepus
vulgaris



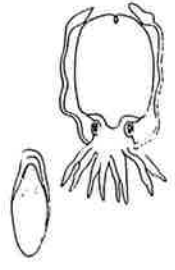
Eledone cirrhosa



Loligo
forbesii



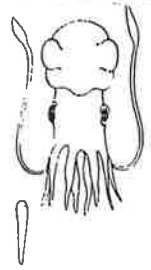
Sepia officinalis



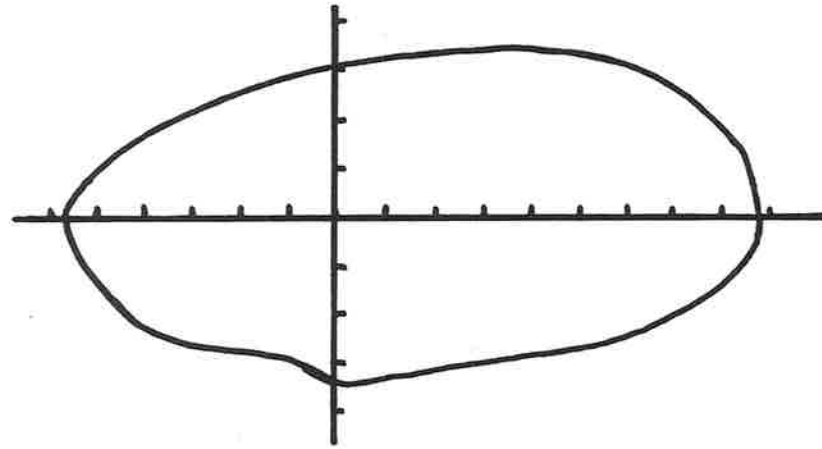
Sepia
atlantica



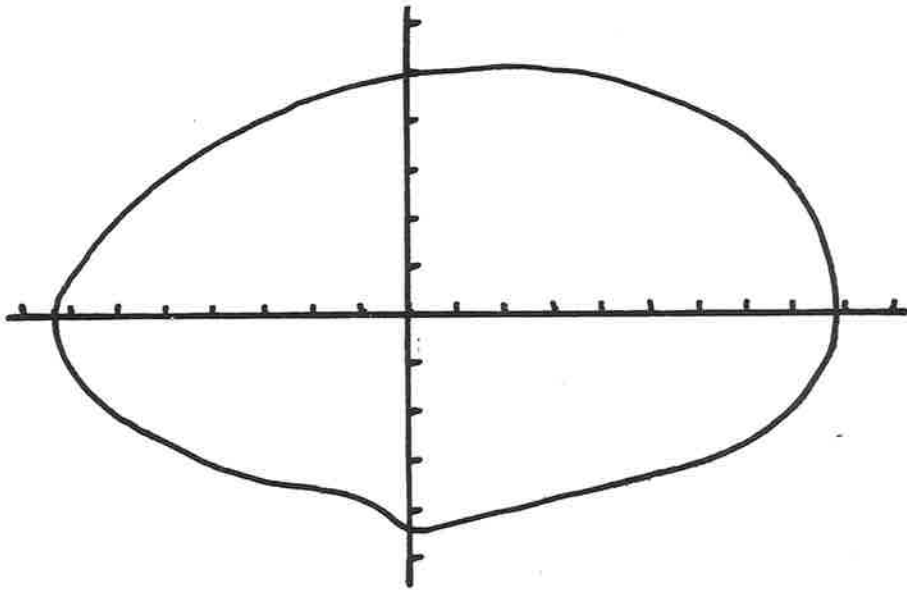
Rossia macrosoma



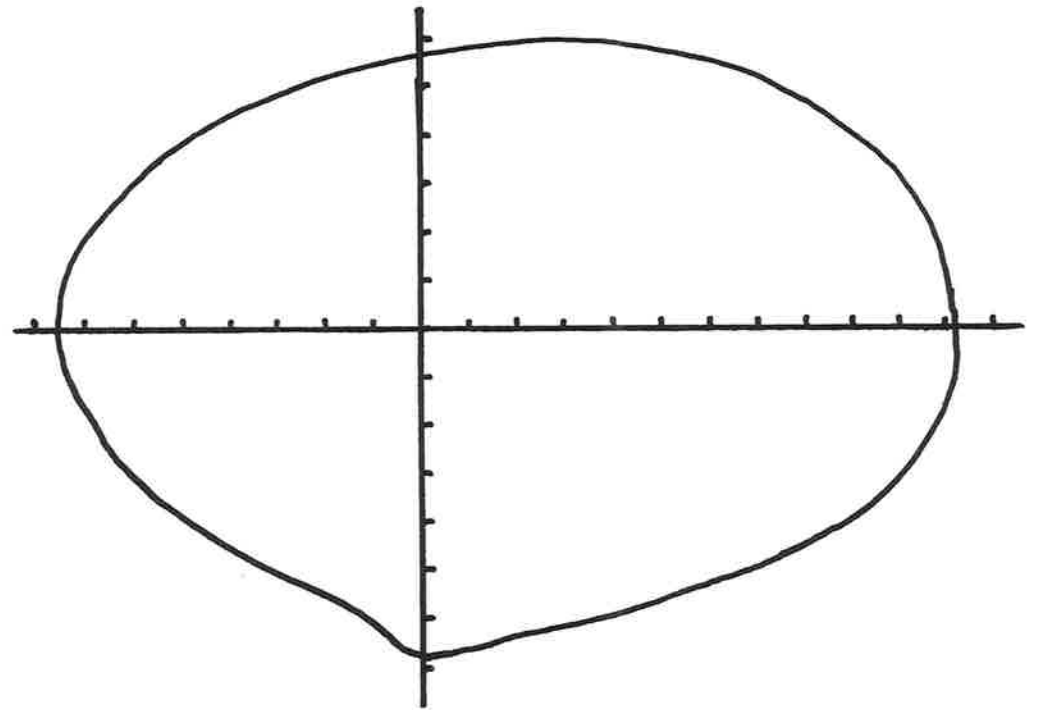




Abra prismatica



Abra nitida



Abra alba