

**The National Marine Biological  
Analytical Quality Control Scheme**

**Macrobenthic Exercise Results – MB17**

**David Hall & Jessica Taylor**  
[davidhall@unicomarine.com](mailto:davidhall@unicomarine.com)

**April 2010**

**Unicomarine Ltd.  
Head Office  
7 Diamond Centre  
Works Road  
Letchworth  
Hertfordshire  
SG6 1LW  
[www.unicomarine.com](http://www.unicomarine.com)**



## **EXERCISE DETAILS**

### **Macrobenthos #17**

**Type/Contents – Artificial Marine Sample based on subtidal Torbay fauna & residue; approx. 0.5 litres gravely, muddy sand; 1mm sieve mesh processing.**

**Circulated – 31/07/2009**

**Completion Date – 30/10/2009**

**Number of Participating Laboratories – 13**

**Number of Results Received – 13**

---

### **Contents**

#### **Results**

Sheet 1. NMBAQC Scheme Macrobenthic Sample (MB17) – Artificial Sample Contents List.

Sheets 2 - 14 . NMBAQC Scheme Interim Results – Macrobenthic exercise (MB17)

#### **Tables**

Table 1. Results from the analysis of Macrobenthic sample MB17 by the participating laboratories.

Table 2. Comparison of the efficiency of extraction of fauna by the participating laboratories for the major taxonomic groups present in sample MB17.

Table 3. Comparison of the estimates of biomass made by the participating laboratories with those made by Unicmarine Ltd. for the major taxonomic groups present in sample MB17.

Table 4. Variation in faunal content reported for the artificial replicate samples distributed as MB17.

Table 5. Sample processing options selected for MB17 by participating laboratories.

#### **Figures**

Figure 1. MB17 data from participating laboratories (raw - untransformed). Cluster dendrogram showing plotted data from participating laboratories as supplied. Known Sample data included.

Figure 2. MB17 data reanalysed by Unicmarine Ltd. Cluster dendrogram showing plotted data from participating laboratories following reanalysis by Unicmarine Ltd. (untransformed) with taxonomic standardisation adjustments. For example juveniles, aggregates and recognised synonyms have been combined. Known Sample data included.

## NMBAQC Scheme Macrobenthic Sample (MB17) – Artificial Sample Contents List

### Residue Content

200ml x	<0.5mm HHA mud (source=PS34)
200ml x	>2<4mm grit and gravel (source=unwanted OS residue)
100ml x	<1mm sand (source=aggregate supplies)

### Faunal Content

#### Uncountable Faunal Fragments

<i>Amphiura filiformis</i>	1 x upper disc & arm sections
<i>Phoronis</i> sp.	1 x headless fragment
<i>Euclymene oerstedii</i>	1 x tail
<i>Minuspio</i> cf. <i>multibranchiata</i>	2 x fragments
<i>Parvicardium scabrum</i>	1 x dead/empty

#### Countable Fauna (Total 25 Taxa, 59 Individuals)

<i>Sternaspis scutata</i>	x 23 (medium)
<i>Kurtiella bidentata</i>	x 6 (4 x large, 2 x small)
<i>Edwardsia claparedii</i>	x 4 (large)
<i>Scalibregma inflatum</i>	x 3 (medium)
<i>Euclymene oerstedii</i>	x 3 (large)
<i>Nucula nitidosa</i>	x 2 (1 x large, 1 x small)
<i>Turritella communis</i>	x 1 (large)
<i>Actiniaria</i>	x 1 (large)
<i>Phoronis</i> sp.	x 1 (medium)
<i>Clymenura</i> sp.	x 1 (medium)
<i>Owenia fusiformis</i>	x 1 (medium/small)
<i>Corbula gibba</i>	x 1 (large)
<i>Melinna palmata</i>	x 1 (small)
<i>Ampharete lindstroemi</i>	x 1 (medium – complete)
<i>Eumida bahusiensis</i>	x 1 (medium)
<i>Heteromastus filiformis</i>	x 1 (medium – anterior only)
<i>Amphiura filiformis</i>	x 1 (medium)
<i>Scoloplos armiger</i>	x 1 (large – complete)
<i>Terebellides stroemi</i>	x 1 (large)
<i>Philine aperta</i>	x 1 (large)
<i>Pholoe baltica</i>	x 1 (large – anterior only)
<i>Abra nitida</i>	x 1 (medium)
<i>Photis longicaudata</i>	x 1 (medium – appendages lost)
<i>Ampelisca tenuicornis</i>	x 1 (medium)
<i>Hydrallmania falcata</i>	x 1 (unattached; polyps present)

NMBAQC Scheme Interim Results

NMBAQC Scheme Macrobenthic Exercise (MB) Results		Summary Data	
LabCode:	LB1601	Diff. In No. Taxa	-1
SampleCode:	MB17	Diff. In No. Individuals	1
Exercise Deadline:	30/10/2009	Missed/Lost Taxa (in residue)	2
Sample Received:	18/11/2009	Missed/Lost Individuals (in residue)	1
Notes:	Artificial Sample prepared by Unicmarine	Taxonomic Errors	3
	1mm sieve mesh	Count Variance	2
	Sample stained	Biomass %diff.	-13.88
		Bray-Curtis Similarity index	92.44

Unicmarine Ltd. Artificial Sample Contents				Participating Laboratory Data			Residue Resorting		Comments
<u>Faunal Content (heads)</u>				<u>Faunal Content (heads)</u>			Missed in Residue	Lost in Processing	
Taxon Number	Taxon Name	Number	Biomass*	Taxon Name	Number	Biomass			
1	Sternaspis scutata (med)	23	0.4865	Sternaspis scutata	23	0.35	0	0	
2	Kurtiella bidentata (4 x lrg, 2 x sml)	6	0.024	<b>Mysella bidentata</b>	7	0.0197	0	0	Taxonomic error, incl. 1xNucula nitidosa; Name change
3	Edwardsia claparedii (lrg)	4	0.1317	Edwardsia claparedii	4	0.057	0	0	
4	Scalibregma inflatum (med)	3	0.0055	Scalibregma inflatum	3	0.0052	0	0	
5	Euclymene oerstedii (lrg)	3	0.0359	Euclymene oerstedii	3	0.024	0	0	
6	Nucula nitidosa (1 x lrg, 1 x sml)	2	0.0521	<b>Nucula hanleyi</b>	1	0.0524	0	0	Taxonomic error (also see taxon 2)
7	Turritella communis (lrg)	1	1.2691	Turritella communis	1	1.2688	0	0	
8	Actiniaria (lrg)	1	0.1183	Actina equina	1	0.1038	0	0	
9	Phoronis sp. (med)	1	0.0003	Phoronis muelleri	1	0.0002	0	0	
10	Clymenura sp. (med)	1	0.002	Clymenura johnstoni	1	0.0017	0	0	
11	Owenia fusiformis (med/sml)	1	0.0021	Owenia fusiformis	1	0.0022	0	0	
12	Corbula gibba (lrg)	1	0.0896	Corbula gibba	1	0.0868	0	0	
13	Melinna palmata (sml)	1	0.0004	Melinna palmata	1	0.0006	0	0	
14	Ampharete lindstroemi (med - complete)	1	0.0006	Ampharete lindstroemi agg	1	0.0011	0	0	Vial dry
15	Eumida bahusiensis (med)	1	0.0003	<b>Phyllodoce spp.</b>	1	0.0004	0	0	Taxonomic error
16	Heteromastus filiformis (med - anterior only)	1	0.0003	Heteromastus filiformis	1	0.0002	0	0	
17	Amphiura filiformis (med)	1	0.0737	Amphiura filiformis	1	0.0501	0	0	Incl. 1 x upper disc only (see below)
18	Scoloplos armiger (lrg - complete)	1	0.0023	Scoloplos armiger	1	0.0018	0	0	
19	Terebellides stroemi (lrg)	1	0.0942	Terebellides stroemi	1	0.076	0	0	
20	Philine aperta (lrg)	1	0.2362	Philine aperta	1	0.2025	0	0	
21	Pholoe baltica (lrg - anterior only)	1	-	-	0	-	0	1	Taxon lost
22	Abra nitida (med - v. good condition)	1	0.0021	Abra nitida	1	0.0018	0	0	
23	Photis longicaudata (med - appendages lost)	1	0.0005	Photis longicaudata	1	0.0009	0	0	
24	Ampelisca tenuicornis (med)	1	0.0005	Ampelisca spp.	1	0.0006	0	0	
25	Hydrallmania falcata (1 x unattached; polyps present)	P	-	-	-	-	0	0	Ignore for stats due to PL SOP
		<b>TOTAL</b>	<b>59</b>	<b>2.6282</b>	<b>TOTAL**</b>	<b>60</b>	<b>2.3078</b>	<b>0</b>	<b>1</b>
<u>Residue Content</u>				<u>Residue Content</u>					
Component	Volume/Qty	-	-	Component	Picked	-	In Residue	Lost in Processing	
- (grit/gravel residue)	200ml	-	-	(grit/gravel residue)	-	-	200ml	n/a	
- (sand residue)	100ml	-	-	(sand residue)	-	-	-	n/a	
- (mud residue <0.5mm)	200ml	-	-	(mud residue <0.5mm)	-	-	-	n/a	
- Amphiura filiformis	1 x upper disc + arm bits	-	-	Amphiura filiformis	1	-	-	n/a	
- Phoronis sp.	1 x bit	-	-	Phoronis sp.	Picked	-	-	n/a	With taxon 22
- Euclymene oerstedii	1 x tail	-	-	Euclymene oerstedii	Picked	-	-	n/a	
- Parvicardium scabrum	1 x dead/empty	-	-	Parvicardium scabrum	1	(0.0066)	-	n/a	
- Minuspio cf. multibranchiata	2 x bits	-	-	Minuspio cf. multibranchiata	-	-	-	n/a	

\*Biomass estimations of Participating Laboratory's vial contents.

\*\*May include individuals enumerated in 'Residue Content'.

NMBAQC Scheme Interim Results

NMBAQC Scheme Macrobenthic Exercise (MB) Results		Summary Data	
LabCode:	LB1602	Diff. In No. Taxa	-3
SampleCode:	MB17	Diff. In No. Individuals	-4
Exercise Deadline:	30/10/2009	Missed Taxa (in residue)	3
Sample Received:	03/11/2009	Missed Individuals (in residue)	5
Notes:	Artificial Sample prepared by Unicmarine	Taxonomic Errors	0
	1mm sieve mesh	Count Variance	1
		Biomass %diff.	-5.48
		Bray-Curtis Similarity index	94.83

Unicomarine Ltd. Artificial Sample Contents				Participating Laboratory Data			Residue Resorting		Comments	
Faunal Content (heads)				Faunal Content (heads)			Missed in Residue	Lost in Processing		
Taxon Number	Taxon Name	Number	Biomass*	Taxon Name	Number	Biomass				
1	Sternaspis scutata (med)	23	1.2122	Sternaspis scutata	23	1.08	0	0		
2	Kurtiella bidentata (4 x lrg, 2 x sml)	6	0.0203	<b>Mysella bidentata</b>	5	0.0186	0	1	1 specimen lost; Name change	
3	Edwardsia claparedii (lrg)	4	0.477	Edwardsia claparedii	4	0.433	0	0		
4	Scalibregma inflatum (med)	3	0.008	Scalibregma inflatum	2	0.008	0	1	1 specimen lost	
5	Euclymene oerstedii (lrg)	3	0.0458	Euclymene oerstedii	3	0.039	0	0	Incl. tail fragment (see below)	
6	Nucula nitidosa (1 x lrg, 1 x sml)	2	0.0338	Nucula nitidosa	2	0.0337	0	0		
7	Turritella communis (lrg)	1	2.3573	Turritella communis	1	2.36	0	0		
8	Actiniaria (lrg)	1	0.2024	ACTINIARIA	1	0.187	0	0		
9	Phoronis sp. (med)	1	0.0012	Phoronis	1	0.0001	0	0		
10	Clymenura sp. (med)	1	0.0011	Clymenura	1	0.0001	0	0		
11	Owenia fusiformis (med/sml)	1	0.0018	Owenia fusiformis	1	0.0006	0	0		
12	Corbula gibba (lrg)	1	0.1032	Corbula gibba	1	0.102	0	0		
13	Melinna palmata (sml)	1	-	-	0	-	0	1	Taxon lost	
14	Ampharete lindstroemi (med - complete)	1	-	-	0	-	0	1	Taxon lost	
15	Eumida bahusiensis (med)	1	0.0003	Eumida bahusiensis	1	0.0001	0	0		
16	Heteromastus filiformis (med - anterior only)	1	-	-	0	-	0	1	Taxon lost	
17	Amphiura filiformis (med)	1	0.0494	Amphiura filiformis	1	0.0465	0	0		
18	Scoloplos armiger (lrg - complete)	1	0.0081	Scoloplos armiger	1	0.0048	0	0		
19	Terebellides stroemi (lrg)	1	0.0251	Terebellides stroemi	1	0.0144	0	0		
20	Philine aperta (lrg)	1	0.28	Philine aperta	1	0.25	0	0		
21	Pholoe baltica (lrg - anterior only)	1	0.0004	Pholoe baltica	1	0.0002	0	0		
22	Abra nitida (med - v. good condition)	1	0.0011	Abra nitida	1	0.0004	0	0		
23	Photis longicaudata (med - appendages lost)	1	0.0004	Photis longicaudata	1	0.0001	0	0		
24	Ampelisca tenuicornis (med)	1	0.0007	Ampelisca tenuicornis	1	0.0001	0	0		
25	Hydrallmania falcata (1 x unattached; polyyps present)	P	-	Hydrallmania falcata	P	-	0	0		
<b>TOTAL</b>		<b>59</b>	<b>4.8296</b>	<b>TOTAL**</b>		<b>55</b>	<b>4.5787</b>	<b>0</b>	<b>5</b>	
Residue Content				Residue Content						
Component	Volume/Qty			Component	Picked		In Residue	Lost in Processing		
- (grit/gravel residue)	200ml	-	-	(grit/gravel residue)	-	-	200ml	n/a		
- (sand residue)	100ml	-	-	(sand residue)	-	-	-	n/a		
- (mud residue <0.5mm)	200ml	-	-	(mud residue <0.5mm)	-	-	-	n/a		
- Amphiura filiformis	1 x upper disc + arm bits	-	-	Amphiura filiformis	1	-	-	n/a		
- Phoronis sp.	1 x bit	-	-	Phoronis sp.	Picked	-	-	n/a		
- Euclymene oerstedii	1 x tail	-	-	Euclymene oerstedii	Picked	-	-	n/a		
- Parvicardium scabrum	1 x dead/empty	-	-	Parvicardium scabrum	-	-	-	n/a		
- Minuspio cf. multibranchiata	2 x bits	-	-	Minuspio cf. multibranchiata	-	-	-	n/a		

\*Biomass estimations of Participating Laboratory's vial contents.

\*\*May include individuals enumerated in 'Residue Content'.

NMBAQC Scheme Interim Results

NMBAQC Scheme Macrobenthic Exercise (MB) Results		Summary Data	
LabCode:	LB1603	Diff. In No. Taxa	-6
SampleCode:	MB17	Diff. In No. Individuals	-6
Exercise Deadline:	30/10/2009	Missed Taxa (in residue)	6
Sample Received:	28/10/2009	Missed Individuals (in residue)	6
Notes:	Artificial Sample prepared by Unicomarine	Taxonomic Errors	1
	1mm sieve mesh	Count Variance	0
	No biomass data	Biomass %diff.	-
		Bray-Curtis Similarity index	92.86

Unicomarine Ltd. Artificial Sample Contents				Participating Laboratory Data			Residue Resorting		Comments	
<u>Faunal Content (heads)</u>				<u>Faunal Content (heads)</u>			Missed in	Lost in		
Taxon Number	Taxon Name	Number	Biomass*	Taxon Name	Number	Biomass	Residue	Processing		
1	Sternaspis scutata (med)	23	-	Sternaspis scutata	23	-	0	0		
2	Kurtiella bidentata (4 x lrg, 2 x sml)	6	-	<b>Mysella bidentata</b>	6	-	0	0	Name change	
3	Edwardsia claparedii (lrg)	4	-	Edwardsia claparedii	4	-	0	0		
4	Scalibregma inflatum (med)	3	-	Scalibregma inflatum	2	-	0	1	1 specimen lost	
5	Euclymene oerstedii (lrg)	3	-	Euclymene oerstedii	3	-	0	0		
6	Nucula nitidosa (1 x lrg, 1 x sml)	2	-	Nucula nitidosa	2	-	0	0		
7	Turritella communis (lrg)	1	-	<b>Turitella communis</b>	1	-	0	0	Spelling error	
8	Actiniaria (lrg)	1	-	ACTINIARIA sp	1	-	0	0		
9	Phoronis sp. (med)	1	-	Phoronis sp	1	-	0	0		
10	Clymenura sp. (med)	1	-	-	0	-	0	1	Taxon lost	
11	Owenia fusiformis (med/sml)	1	-	Owenia fusiformis	1	-	0	0		
12	Corbula gibba (lrg)	1	-	Corbula gibba	1	-	0	0		
13	Melinna palmata (sml)	1	-	Melinna palmata	1	-	0	0		
14	Ampharete lindstroemi (med - complete)	1	-	-	0	-	0	1	Taxon lost	
15	Eumida bahusiensis (med)	1	-	-	0	-	0	1	Taxon lost	
16	Heteromastus filiformis (med - anterior only)	1	-	-	0	-	0	1	Taxon lost	
17	Amphiura filiformis (med)	1	-	Amphiura filiformis	1	-	0	0	Incl. upper disc fragment (see below)	
18	Scoloplos armiger (lrg - complete)	1	-	Scoloplos armiger	1	-	0	0		
19	Terebellides stroemi (lrg)	1	-	Terebellides stroemi	1	-	0	0		
20	Philine aperta (lrg)	1	-	Philine aperta	1	-	0	0		
21	Pholoe baltica (lrg - anterior only)	1	-	-	0	-	0	1	Taxon lost	
22	Abra nitida (med - v. good condition)	1	-	Abra nitida	1	-	0	0		
23	Photis longicaudata (med - appendages lost)	1	-	Photis longicaudata	1	-	0	0		
24	Ampelisca tenuicornis (med)	1	-	<b>Ampelisca diadema</b>	1	-	0	0	Taxonomic error	
25	Hydrallmania falcata (1 x unattached; polyps present)	P	-	-	-	-	0	0	Ignore for stats due to PL SOP	
TOTAL		59	0	TOTAL**		53	0	0	6	
<u>Residue Content</u>				<u>Residue Content</u>						
Component	Volume/Qty			Component	Picked		In Residue	Lost in Processing		
- (grit/gravel residue)	200ml	-		(grit/gravel residue)	-	-	200ml	n/a		
- (sand residue)	100ml	-		(sand residue)	-	-	-	n/a		
- (mud residue <0.5mm)	200ml	-		(mud residue <0.5mm)	-	-	-	n/a		
- Amphiura filiformis	1 x upper disc + arm bits	-		Amphiura filiformis	Picked	-	-	n/a		
- Phoronis sp.	1 x bit	-		Phoronis sp.	Picked	-	-	n/a		
- Euclymene oerstedii	1 x tail	-		Euclymene oerstedii	Picked	-	-	n/a		
- Parvicardium scabrum	1 x dead/empty	-		Parvicardium scabrum	-	-	-	n/a		
- Minuspio cf. multibranchiata	2 x bits	-		Minuspio cf. multibranchiata	-	-	-	n/a		

\*Biomass estimations of Participating Laboratory's vial contents.

\*\*May include individuals enumerated in 'Residue Content'.

NMBAQC Scheme Interim Results

NMBAQC Scheme Macrobenthic Exercise (MB) Results		Summary Data	
LabCode:	LB1604	Diff. In No. Taxa	-4
SampleCode:	MB17	Diff. In No. Individuals	-5
Exercise Deadline:	30/10/2009	Missed Taxa (in residue)	4
Sample Received:	23/10/2009	Missed Individuals (in residue)	5
Notes:	Artificial Sample prepared by Unicmarine 1mm sieve mesh	Taxonomic Errors	0
		Count Variance	0
		Biomass %diff.	4.45
		Bray-Curtis Similarity index	94.74

Unicmarine Ltd. Artificial Sample Contents				Participating Laboratory Data			Residue Resorting		Comments
<u>Faunal Content (heads)</u>				<u>Faunal Content (heads)</u>			Missed in Residue	Lost in Processing	
Taxon Number	Taxon Name	Number	Biomass*	Taxon Name	Number	Biomass			
1	Sternaspis scutata (med)	23	0.6448	Sternaspis scutata	22	0.64527	0	1	1 specimen lost
2	Kurtiella bidentata (4 x lrg, 2 x sml)	6	0.0281	<b>Mysella bidentata</b>	5	0.02897	0	1	1 specimen lost; Name change
3	Edwardsia claparedii (lrg)	4	0.4048	Edwardsia claparedii	4	0.48918	0	0	
4	Scalibregma inflatum (med)	3	0.0075	Scalibregma inflatum	3	0.00727	0	0	
5	Euclymene oerstedii (lrg)	3	0.0455	Euclymene oerstedii	3	0.05683	0	0	
6	Nucula nitidosa (1 x lrg, 1 x sml)	2	0.0339	Nucula nitidosa	2	0.03391	0	0	
7	Turritella communis (lrg)	1	1.9741	Turritella communis	1	1.92619	0	0	
8	Actiniaria (lrg)	1	0.1331	ACTINIARIA	1	0.17408	0	0	
9	Phoronis sp. (med)	1	0.0008	Phoronis sp.	1	0.00097	0	0	
10	Clymenura sp. (med)	1	0.002	Clymenura sp.	1	0.00281	0	0	
11	Owenia fusiformis (med/sml)	1	0.0017	Owenia fusiformis	1	0.0023	0	0	
12	Corbula gibba (lrg)	1	0.1339	Corbula gibba	1	0.11598	0	0	
13	Melinna palmata (sml)	1	0.0011	Melinna palmata	1	0.00121	0	0	
14	Ampharete lindstroemi (med - complete)	1	0.0018	Ampharete lindstroemi	1	0.00147	0	0	
15	Eumida bahusiensis (med)	1	-	-	0	-	0	1	Taxon lost
16	Heteromastus filiformis (med - anterior only)	1	-	-	0	-	0	1	Taxon lost
17	Amphiura filiformis (med)	1	0.0328	Amphiura filiformis	1	0.03725	0	0	
18	Scoloplos armiger (lrg - complete)	1	0.0074	Scoloplos armiger	1	0.00562	0	0	
19	Terebellides stroemi (lrg)	1	0.0269	Terebellides stroemi	1	0.02984	0	0	
20	Philine aperta (lrg)	1	0.291	Philine aperta	1	0.38759	0	0	
21	Pholoe baltica (lrg - anterior only)	1	-	-	0	-	0	1	Taxon lost
22	Abra nitida (med - v. good condition)	1	0.0009	PELECYPODA indet	1	0.00098	0	0	
23	Photis longicaudata (med - appendages lost)	1	0.0005	Photis longicaudata	1	0.00052	0	0	
24	Ampelisca tenuicornis (med)	1	0.0006	Ampelisca tenuicornis	1	0.00062	0	0	
25	Hydrallmania falcata (1 x unattached; polyps present)	P	-	-	-	-	0	P	Taxon lost
<b>TOTAL</b>		<b>59</b>	<b>3.7732</b>	<b>TOTAL**</b>		<b>54</b>	<b>3.94886</b>	<b>0</b>	<b>5</b>
<u>Residue Content</u>				<u>Residue Content</u>					
Component	Volume/Qty	-	-	Component	Picked	-	In Residue	Lost in Processing	
(grit/gravel residue)	200ml	-	-	(grit/gravel residue)	-	-	200ml	n/a	
(sand residue)	100ml	-	-	(sand residue)	-	-	-	n/a	
(mud residue <0.5mm)	200ml	-	-	(mud residue <0.5mm)	-	-	-	n/a	
- Amphiura filiformis	1 x upper disc + arm bits	-	-	Amphiura filiformis	Picked	-	-	n/a	
- Phoronis sp.	1 x bit	-	-	Phoronis sp.	Picked	-	-	n/a	
- Euclymene oerstedii	1 x tail	-	-	Euclymene oerstedii	Picked	-	-	n/a	
- Parvicardium scabrum	1 x dead/empty	-	-	Parvicardium scabrum	-	-	-	n/a	
- Minuspio cf. multibranchiata	2 x bits	-	-	Minuspio cf. multibranchiata	Picked	-	-	n/a	

\*Biomass estimations of Participating Laboratory's vial contents.

\*\*May include individuals enumerated in 'Residue Content'.

NMBAQC Scheme Interim Results

NMBAQC Scheme Macroenthic Exercise (MB) Results		Summary Data	
LabCode:	LB1605	Diff. In No. Taxa	-2
SampleCode:	MB17	Diff. In No. Individuals	-2
Exercise Deadline:	30/10/2009	Missed Taxa (in residue)	2
Sample Received:	16/12/2009	Missed Individuals (in residue)	3
Notes:	Artificial Sample prepared by Unicumarine	Taxonomic Errors	1
	1mm sieve mesh	Count Variance	1
	Sample stained	Biomass %diff.	11.15
		Bray-Curtis Similarity index	94.02

Unicumarine Ltd. Artificial Sample Contents				Participating Laboratory Data			Residue Resorting		Comments
<u>Faunal Content (heads)</u>				<u>Faunal Content (heads)</u>			Missed in Residue	Lost in Processing	
Taxon Number	Taxon Name	Number	Biomass*	Taxon Name	Number	Biomass			
1	Sternaspis scutata (med)	23	0.5923	Sternaspis scutata	22	0.6721	0	1	Miscounted - vial contained 23
2	Kurtiella bidentata (4 x lrg, 2 x sml)	6	0.0223	<b>Myrella bidentata</b>	6	0.0234	0	0	Name change
3	Edwardsia claparedii (lrg)	4	0.4501	Edwardsia claparedii	4	0.4879	0	0	
4	Scalibregma inflatum (med)	3	0.0082	Scalibregma inflatum	3	0.0112	0	0	
5	Euclymene oerstedii (lrg)	3	0.029	Euclymene oerstedii	3	0.0393	0	0	
6	Nucula nitidosa (1 x lrg, 1 x sml)	2	0.0391	Nucula nitidosa	1	0.0367	1	0	
7	Turritella communis (lrg)	1	-	-	0	-	1	0	
8	Actiniaria (lrg)	1	0.0929	Anthozoa sp.	1	0.1092	0	0	
9	Phoronis sp. (med)	1	0.0012	Phoronis sp.	1	0.0016	0	0	
10	Clymenura sp. (med)	1	0.0016	Clymenura sp.	1	0.0019	0	0	
11	Owenia fusiformis (med/sml)	1	0.0027	Owenia fusiformis	1	0.0026	0	0	
12	Corbula gibba (lrg)	1	0.1015	Corbula gibba	1	0.1239	0	0	
13	Melinna palmata (sml)	1	0.0025	<b>Melinna elizabethae</b>	1	0.003	0	0	Taxonomic error
14	Ampharete lindstroemi (med - complete)	1	0.0007	Ampharete lindstroemi	1	0.0007	0	0	
15	Eumida bahusiensis (med)	1	0.0008	Eumida sp.	1	0.0012	0	0	
16	Heteromastus filiformis (med - anterior only)	1	0.001	Heteromastus filiformis	1	0.0012	0	0	
17	Amphiura filiformis (med)	1	0.0647	Amphiura filiformis	1	0.0762	0	0	
18	Scoloplos armiger (lrg - complete)	1	0.0078	Scoloplos armiger	1	0.0105	0	0	
19	Terebellides stroemi (lrg)	1	0.0268	Terebellides stroemi	1	0.0338	0	0	
20	Philine aperta (lrg)	1	0.2099	Philine sp.	1	0.2274	0	0	
21	Pholoe baltica (lrg - anterior only)	1	0.0005	Pholoe baltica	1	0.0005	0	0	
22	Abra nitida (med - v. good condition)	1	0.0015	Abra nitida	1	0.0013	0	0	
23	Photis longicaudata (med - appendages lost)	1	0.0004	Photis longicaudata	1	0.0004	0	0	
24	Ampelisca tenuicornis (med)	1	0.0011	Ampelisca tenuicornis	1	0.0008	0	0	
25	Hydrallmania falcata (1 x unattached; polyps present)	P	-	-	-	-	0	P	Taxon lost
	<b>TOTAL</b>	<b>59</b>	<b>1.6586</b>	<b>TOTAL**</b>	<b>57</b>	<b>1.8668</b>	<b>2</b>	<b>1</b>	
<u>Residue Content</u>				<u>Residue Content</u>					
Component	Volume/Qty			Component	Picked		In Residue	Lost in Processing	
- (grit/gravel residue)	200ml	-	-	(grit/gravel residue)	-	-	200ml	n/a	
- (sand residue)	100ml	-	-	(sand residue)	-	-	-	n/a	
- (mud residue <0.5mm)	200ml	-	-	(mud residue <0.5mm)	-	-	-	n/a	
- Amphiura filiformis	1 x upper disc + arm bits	-	-	Amphiura filiformis	1	-	-	n/a	In taxon vial 17
- Phoronis sp.	1 x bit	-	-	Phoronis sp.	Picked	-	-	n/a	
- Euclymene oerstedii	1 x tail	-	-	Euclymene oerstedii	Picked	-	-	n/a	
- Parvicardium scabrum	1 x dead/empty	-	-	Parvicardium scabrum	-	-	-	n/a	
- Minuspio cf. multibranchiata	2 x bits	-	-	Minuspio cf. multibranchiata	-	-	-	n/a	

\*Biomass estimations of Participating Laboratory's vial contents.

\*\*May include individuals enumerated in 'Residue Content'.



NMBAQC Scheme Interim Results

NMBAQC Scheme Macro-benthic Exercise (MB) Results		Summary Data	
LabCode:	LB1607	Diff. In No. Taxa	0
SampleCode:	MB17	Diff. In No. Individuals	1
Exercise Deadline:	30/10/2009	Missed Taxa (in residue)	0
Sample Received:	30/10/2009	Missed Individuals (in residue)	0
Notes:	Artificial Sample prepared by Unicomarine	Taxonomic Errors	0
	1mm sieve mesh	Count Variance	1
	No biomass data	Biomass %diff.	-
		Bray-Curtis Similarity index	99.17

Unicomarine Ltd. Artificial Sample Contents				Participating Laboratory Data			Residue Resorting		Comments
Faunal Content (heads)				Faunal Content (heads)			Missed in Residue	Lost in Processing	
Taxon Number	Taxon Name	Number	Biomass*	Taxon Name	Number	Biomass			
1	Sternaspis scutata (med)	23	-	Sternaspis scutata	23	-	0	0	
2	Kurtiella bidentata (4 x lrg, 2 x sml)	6	-	<b>Myrella bidentata</b>	6	-	0	0	Name change
3	Edwardsia claparedii (lrg)	4	-	Edwardsia claparedii	4	-	0	0	
4	Scalibregma inflatum (med)	3	-	Scalibregma inflatum	3	-	0	0	
5	Euclymene oerstedii (lrg)	3	-	Euclymene oerstedii	3	-	0	0	
6	Nucula nitidosa (1 x lrg, 1 x sml)	2	-	Nucula nitidosa	2	-	0	0	
7	Turritella communis (lrg)	1	-	<b>Turritella communis</b>	1	-	0	0	Tur com dead therefore not extracted by PL, data adjusted
8	Actiniaria (lrg)	1	-	ACTINIARIA	1	-	0	0	
9	Phoronis sp. (med)	1	-	Phoronis sp.	1	-	0	0	
10	Clymenura sp. (med)	1	-	Clymenura sp.	1	-	0	0	
11	Owenia fusiformis (med/sml)	1	-	Owenia fusiformis	1	-	0	0	
12	Corbula gibba (lrg)	1	-	Corbula gibba	1	-	0	0	
13	Melinna palmata (sml)	1	-	Melinna palmata	1	-	0	0	
14	Ampharete lindstroemi (med - complete)	1	-	Ampharete lindstroemi	1	-	0	0	
15	Eumida bahusiensis (med)	1	-	Eumida bahusiensis	1	-	0	0	
16	Heteromastus filiformis (med - anterior only)	1	-	Heteromastus filiformis	1	-	0	0	
17	Amphiura filiformis (med)	1	-	Amphiura filiformis	1	-	0	0	
18	Scoloplos armiger (lrg - complete)	1	-	<b>Scoloplos arminger</b>	1	-	0	0	Spelling error
19	Terebellides stroemi (lrg)	1	-	Terebellides stroemi	1	-	0	0	
20	Philine aperta (lrg)	1	-	Philine sp.	1	-	0	0	
21	Pholoe baltica (lrg - anterior only)	1	-	Pholoe baltica	1	-	0	0	
22	Abra nitida (med - v. good condition)	1	-	Abra nitida	1	-	0	0	
23	Photis longicaudata (med - appendages lost)	1	-	Photis longicaudata	1	-	0	0	
24	Ampelisca tenuicornis (med)	1	-	Ampelisca tenuicornis	1	-	0	0	
25	Hydrallmania falcata (1 x unattached; polyps present)	P	-	Hydrallmania falcata	P	-	0	0	PL note: 'not attached'
	<b>TOTAL</b>	<b>59</b>	<b>0</b>	<b>TOTAL**</b>	<b>60</b>	<b>0</b>	<b>0</b>	<b>0</b>	
Residue Content				Residue Content					
- Component	Volume/Qty	-	-	Component	Picked	-	In Residue	Lost in Processing	
- (grit/gravel residue)	200ml	-	-	(grit/gravel residue)	-	-	200ml	n/a	
- (sand residue)	100ml	-	-	(sand residue)	-	-	-	n/a	
- (mud residue <0.5mm)	200ml	-	-	(mud residue <0.5mm)	-	-	-	n/a	
- Amphiura filiformis	1 x upper disc + arm bits	-	-	Amphiura filiformis	Picked	-	-	n/a	
- Phoronis sp.	1 x bit	-	-	Phoronis sp.	1	-	-	n/a	In taxon vial 9
- Euclymene oerstedii	1 x tail	-	-	Euclymene oerstedii	Picked	-	-	n/a	
- Parvicardium scabrum	1 x dead/empty	-	-	Parvicardium scabrum	-	-	-	n/a	
- Minuspio cf. multibranchiata	2 x bits	-	-	Minuspio cf. multibranchiata	Picked	-	-	n/a	

\*Biomass estimations of Participating Laboratory's vial contents.

\*\*May include individuals enumerated in 'Residue Content'.

NMBAQC Scheme Interim Results

NMBAQC Scheme Macroinvertebrate Exercise (MB) Results		Summary Data	
LabCode:	LB1608	Diff. In No. Taxa	0
SampleCode:	MB17	Diff. In No. Individuals	-1
Exercise Deadline:	30/10/2009	Missed Taxa (in residue)	1
Sample Received:	28/10/2009	Missed Individuals (in residue)	1
Notes:	Artificial Sample prepared by Unicomarine	Taxonomic Errors	1
	Imm sieve mesh	Count Variance	0
	Sample stained	Biomass %diff.	-
	No biomass data	Bray-Curtis Similarity index	97.52

Unicomarine Ltd. Artificial Sample Contents				Participating Laboratory Data			Residue Resorting		Comments
Faunal Content (heads)				Faunal Content (heads)			Missed in Residue	Lost in Processing	
Taxon Number	Taxon Name	Number	Biomass*	Taxon Name	Number	Biomass			
1	Sternaspis scutata (med)	23	-	Sternaspis scutata	23	-	0	0	
2	Kurtiella bidentata (4 x lrg, 2 x sml)	6	-	<b>Mysella bidentata</b>	6	-	0	0	Name change
3	Edwardsia claparedii (lrg)	4	-	Edwardsia claparedii	4	-	0	0	
4	Scalibregma inflatum (med)	3	-	Scalibregma inflatum	3	-	0	0	
5	Euclymene oerstedii (lrg)	3	-	Euclymene oerstedii	3	-	0	0	
6	Nucula nitidosa (1 x lrg, 1 x sml)	2	-	Nucula nitidosa	2	-	0	0	
7	Turritella communis (lrg)	1	-	Turritella communis	1	-	0	0	
8	Actiniaria (lrg)	1	-	Actiniaria sp.	1	-	0	0	
9	Phoronis sp. (med)	1	-	Phoronis muelleri ?	1	-	0	0	
10	Clymenura sp. (med)	1	-	Clymenura sp.	1	-	0	0	
11	Owenia fusiformis (med/sml)	1	-	Owenia fusiformis	1	-	0	0	
12	Corbula gibba (lrg)	1	-	Corbula gibba	1	-	0	0	
13	Melinna palmata (sml)	1	-	Melinna palmata	1	-	0	0	
14	Ampharete lindstroemi (med - complete)	1	-	Ampharete lindstroemi	1	-	0	0	
15	Eumida bahusiensis (med)	1	-	<b>Eumida sanguinea ?</b>	1	-	0	0	Taxonomic error
16	Heteromastus filiformis (med - anterior only)	1	-	Heteromastus filiformis	1	-	0	0	
17	Amphiura filiformis (med)	1	-	Amphiura filiformis	1	-	0	0	
18	Scoloplos armiger (lrg - complete)	1	-	Scoloplos armiger	1	-	0	0	
19	Terebellides stroemi (lrg)	1	-	Terebellides stroemi	1	-	0	0	
20	Philine aperta (lrg)	1	-	Philine aperta	1	-	0	0	
21	Pholoe baltica (lrg - anterior only)	1	-	-	0	-	0	1	Taxon lost
22	Abra nitida (med - v. good condition)	1	-	Abra nitida	1	-	0	0	
23	Photis longicaudata (med - appendages lost)	1	-	Photis longicaudata	1	-	0	0	
24	Ampelisca tenuicornis (med)	1	-	Ampelisca tenuicornis	1	-	0	0	
25	Hydrallmania falcata (1 x unattached; polyps present)	P	-	Hydrallmania falcata	P	-	0	0	
26	-	-	-	<b>Conopeum reticulum</b>	<b>P</b>	-	n/a	n/a	Dead
27	-	-	-	<b>(Leuckartiara octona ?)</b>	<b>(P)</b>	<b>(-)</b>	n/a	n/a	Ignore for stats - unintentional fauna
TOTAL		59	0	TOTAL**		58	0	0	1
Residue Content				Residue Content					
Component	Volume/Qty			Component	Picked		In Residue	Lost in Processing	
- (grit/gravel residue)	200ml	-	-	(grit/gravel residue)	-	-	200ml	n/a	
- (sand residue)	100ml	-	-	(sand residue)	-	-	-	n/a	
- (mud residue <0.5mm)	200ml	-	-	(mud residue <0.5mm)	-	-	-	n/a	
- Hydrallmania falcata (1 x unattached)	P	-	-				-	n/a	
- Amphiura filiformis	1 x upper disc + arm bits	-	-	Amphiura filiformis	Picked	-	-	n/a	
- Phoronis sp.	1 x bit	-	-	Phoronis sp.	Picked	-	-	n/a	
- Euclymene oerstedii	1 x tail	-	-	Euclymene oerstedii	Picked	-	-	n/a	
- Parvicardium scabrum	1 x dead/empty	-	-	Parvicardium scabrum	-	-	-	n/a	
- Minuspio cf. multibranchiata	2 x bits	-	-	Minuspio cf. multibranchiata	Picked	-	-	n/a	

\*Biomass estimations of Participating Laboratory's vial contents.

\*\*May include individuals enumerated in 'Residue Content'.

NMBAQC Scheme Interim Results

NMBAQC Scheme Macroinvertebrate Exercise (MB) Results		Summary Data	
LabCode:	LB1609	Diff. In No. Taxa	-2
SampleCode:	MB17	Diff. In No. Individuals	-5
Exercise Deadline:	30/10/2009	Missed Taxa (in residue)	2
Sample Received:	30/10/2009	Missed Individuals (in residue)	5
Notes:	Artificial Sample prepared by Unicomarine	Taxonomic Errors	1
	1mm sieve mesh	Count Variance	0
	No biomass data	Biomass % diff.	-
		Bray-Curtis Similarity index	93.91

Unicomarine Ltd. Artificial Sample Contents				Participating Laboratory Data			Residue Resorting		Comments	
Faunal Content (heads)				Faunal Content (heads)			Missed in Residue	Lost in Processing		
Taxon Number	Taxon Name	Number	Biomass*	Taxon Name	Number	Biomass				
1	Sternaspis scutata (med)	23	-	Sternaspis scutata	23	-	0	0		
2	Kurtiella bidentata (4 x lrg, 2 x sml)	6	-	<b>Mysella bidentata</b>	4	-	2	0	Name change	
3	Edwardsia claparedii (lrg)	4	-	Edwardsia inet	4	-	0	0		
4	Scalibregma inflatum (med)	3	-	Scalibregma inflatum	2	-	0	1	1 specimen lost	
5	Euclymene oerstedii (lrg)	3	-	Euclymene oerstedii	3	-	0	0		
6	Nucula nitidosa (1 x lrg, 1 x sml)	2	-	Nucula nitidosa	2	-	0	0		
7	Turritella communis (lrg)	1	-	Turritella communis	1	-	0	0		
8	Actiniaria (lrg)	1	-	Actinia indet.	1	-	0	0		
9	Phoronis sp. (med)	1	-	Phoronis indet.	1	-	0	0		
10	Clymenura sp. (med)	1	-	-	0	-	0	1	Taxon lost	
11	Owenia fusiformis (med/sml)	1	-	Owenia fusiformis	1	-	0	0		
12	Corbula gibba (lrg)	1	-	Corbula gibba	1	-	0	0		
13	Melinna palmata (sml)	1	-	Melinna palmata	1	-	0	0		
14	Ampharete lindstroemi (med - complete)	1	-	Ampharete lindstroemi	1	-	0	0		
15	Eumida bahusensis (med)	1	-	-	0	-	0	1	Taxon lost	
16	Heteromastus filiformis (med - anterior only)	1	-	Heteromastus filiformis	1	-	0	0		
17	Amphiura filiformis (med)	1	-	Amphiura filiformis	1	-	0	0		
18	Scoloplos armiger (lrg - complete)	1	-	Scoloplos armiger	1	-	0	0		
19	Terebellides stroemi (lrg)	1	-	Terebellides stroemi	1	-	0	0		
20	Philine aperta (lrg)	1	-	Philine aperta	1	-	0	0		
21	Pholoe baltica (lrg - anterior only)	1	-	Pholoe baltica	1	-	0	0		
22	Abra nitida (med - v. good condition)	1	-	Abra nitida	1	-	0	0		
23	Photis longicaudata (med - appendages lost)	1	-	Photis longicaudata	1	-	0	0		
24	Ampelisca tenuicornis (med)	1	-	Ampelisca tenuicornis	1	-	0	0		
25	Hydrallmania falcata (1 x unattached; polyps present)	P	-	<b>Selaginopsis fusca</b>	P	-	0	0	Taxonomic error	
<b>TOTAL</b>		<b>59</b>	<b>0</b>	<b>TOTAL**</b>		<b>54</b>	<b>0</b>	<b>2</b>	<b>3</b>	
Residue Content				Residue Content						
Component	Volume/Qty			Component	Picked		In Residue	Lost in Processing		
- (grit/gravel residue)	200ml	-	-	(grit/gravel residue)	-	-	200ml	n/a		
- (sand residue)	100ml	-	-	(sand residue)	-	-	-	n/a		
- (mud residue <0.5mm)	200ml	-	-	(mud residue <0.5mm)	-	-	-	n/a		
- Amphiura filiformis	1 x upper disc + arm bits	-	-	Amphiura filiformis	Picked	-	-	n/a		
- Phoronis sp.	1 x bit	-	-	Phoronis sp.	Picked	-	-	n/a		
- Euclymene oerstedii	1 x tail	-	-	Euclymene oerstedii	Picked	-	-	n/a		
- Parvicardium scabrum	1 x dead/empty	-	-	Parvicardium scabrum	-	-	-	n/a		
- Minuspio cf. multibranchiata	2 x bits	-	-	Minuspio cf. multibranchiata	-	-	-	n/a		

\*Biomass estimations of Participating Laboratory's vial contents.

\*\*May include individuals enumerated in 'Residue Content'.

NMBAQC Scheme Interim Results

NMBAQC Scheme Macrobenthic Exercise (MB) Results		Summary Data	
LabCode:	LB1621	Diff. In No. Taxa	1
SampleCode:	MB17	Diff. In No. Individuals	7
Exercise Deadline:	30/10/2009	Missed Taxa (in residue)	0
Sample Received:	28/10/2009	Missed Individuals (in residue)	2
Notes:	Artificial Sample prepared by Unicamarine	Taxonomic Errors	0
	1mm sieve mesh	Count Variance	9
	No biomass data	Biomass %diff.	-
		Bray-Curtis Similarity index	92.19

Unicamarine Ltd. Artificial Sample Contents				Participating Laboratory Data			Residue Resorting		Comments
<u>Faunal Content (heads)</u>				<u>Faunal Content (heads)</u>			Missed in Residue	Lost in Processing	
Taxon Number	Taxon Name	Number	Biomass*	Taxon Name	Number	Biomass			
1	Sternaspis scutata (med)	23	-	Sternaspis scutata	31	-	1	0	Transcription error ("20+ 11"); 22 in vial Name change
2	Kurtiella bidentata (4 x lrg, 2 x sml)	6	-	Myrsella bidentata	6	-	0	0	
3	Edwardsia claparedii (lrg)	4	-	Edwardsia claparedii	4	-	0	0	
4	Scalibregma inflatum (med)	3	-	Scalibregma inflatum	3	-	0	0	
5	Euclymene oerstedii (lrg)	3	-	Euclymene oerstedii	3	-	0	0	
6	Nucula nitidosa (1 x lrg, 1 x sml)	2	-	Nucula nitidosa	1	-	1	0	
7	Turritella communis (lrg)	1	-	Turritella communis	1	-	0	0	
8	Actiniaria (lrg)	1	-	Actiniaria	1	-	0	0	
9	Phoronis sp. (med)	1	-	Phoronis sp.	1	-	0	0	
10	Clymenura sp. (med)	1	-	Clymenura sp.	1	-	0	0	
11	Owenia fusiformis (med/sml)	1	-	Owenia fusiformis	1	-	0	0	
12	Corbula gibba (lrg)	1	-	Corbula gibba	1	-	0	0	
13	Melinna palmata (sml)	1	-	Melinna palmata	1	-	0	0	
14	Ampharete lindstroemi (med - complete)	1	-	Ampharete lindstroemi	1	-	0	0	
15	Eumida bahusiensis (med)	1	-	Eumida bahusiensis	1	-	0	0	
16	Heteromastus filiformis (med - anterior only)	1	-	Heteromastus filiformis	1	-	0	0	
17	Amphiura filiformis (med)	1	-	Amphiura filiformis	1	-	0	0	
18	Scoloplos armiger (lrg - complete)	1	-	Scoloplos armiger	1	-	0	0	
19	Terebellides stroemi (lrg)	1	-	Terebellides stroemi	1	-	0	0	
20	Philine aperta (lrg)	1	-	Philine aperta	1	-	0	0	
21	Pholoe baltica (lrg - anterior only)	1	-	Pholoe baltica	1	-	0	0	
22	Abra nitida (med - v. good condition)	1	-	Abra nitida	1	-	0	0	
23	Photis longicaudata (med - appendages lost)	1	-	Photis longicaudata	1	-	0	0	
24	Ampelisca tenuicornis (med)	1	-	Ampelisca tenuicornis	1	-	0	0	
25	Hydrallmania falcata (1 x unattached; polyps present)	P	-	Hydrallmania falcata	P	-	0	0	
26	-	-	-	Electra monostachys	P	-	n/a	n/a	Dead
TOTAL		59	0	TOTAL**		66	0	2	0
<u>Residue Content</u>				<u>Residue Content</u>			In Residue	Lost in Processing	
Component	Volume/Qty		Component	Picked					
- (grit/gravel residue)	200ml	-	(grit/gravel residue)	-	-	200ml	n/a		
- (sand residue)	100ml	-	(sand residue)	-	-	-	n/a		
- (mud residue <0.5mm)	200ml	-	(mud residue <0.5mm)	-	-	-	n/a		
- Amphiura filiformis	1 x upper disc + arm bits	-	Amphiura filiformis	-	-	-	n/a		
- Phoronis sp.	1 x bit	-	Phoronis sp.	-	-	-	n/a		
- Euclymene oerstedii	1 x tail	-	Euclymene oerstedii	-	-	-	n/a		
- Parvicardium scabrum	1 x dead/empty	-	Parvicardium scabrum	-	-	-	n/a		
- Minuspio cf. multibranchiata	2 x bits	-	Minuspio cf. multibranchiata	-	-	-	n/a		

\*Biomass estimations of Participating Laboratory's vial contents.

\*\*May include individuals enumerated in 'Residue Content'.

NMBAQC Scheme Interim Results

NMBAQC Scheme Macro-benthic Exercise (MB) Results		Summary Data	
LabCode:	LB1635	Diff. In No. Taxa	1
SampleCode:	MB17	Diff. In No. Individuals	1
Exercise Deadline:	30/10/2009	Missed Taxa (in residue)	0
Sample Received:	29/10/2009	Missed Individuals (in residue)	0
Notes:	Artificial Sample prepared by Unicamarine	Taxonomic Errors	2
	1mm sieve mesh	Count Variance	1
	No biomass data	Biomass %diff.	-
		Bray-Curtis Similarity index	97.52

Unicamarine Ltd. Artificial Sample Contents				Participating Laboratory Data			Residue Resorting		Comments
<u>Faunal Content (heads)</u>				<u>Faunal Content (heads)</u>			Missed in Residue	Lost in Processing	
Taxon Number	Taxon Name	Number	Biomass*	Taxon Name	Number	Biomass			
1	Sternaspis scutata (med)	23	-	Sternaspis scutata	23	-	0	0	
2	Kurtiella bidentata (4 x lrg, 2 x sml)	6	-	Kurtiella bidentata	6	-	0	0	
3	Edwardsia claparedii (lrg)	4	-	Edwardsia claparedii	4	-	0	0	
4	Scalibregma inflatum (med)	3	-	Scalibregma inflatum	3	-	0	0	
5	Euclymene oerstedii (lrg)	3	-	<b>Euclymene oerstedii</b>	3	-	0	0	Spelling error
6	Nucula nitidosa (1 x lrg, 1 x sml)	2	-	Nucula nitidosa	1	-	0	0	
				Nucula nitidosa Juv.	1	-			
7	Turritella communis (lrg)	1	-	Turritella communis	1	-	0	0	
8	Actinaria (lrg)	1	-	<b>Actinaria</b>	1	-	0	0	Spelling error
9	Phoronis sp. (med)	1	-	Phoronis spp.	1	-	0	0	
10	Clymenura sp. (med)	1	-	Clymenura johnstoni	1	-	0	0	
11	Owenia fusiformis (med/sml)	1	-	Owenia fusiformis	1	-	0	0	
12	Corbula gibba (lrg)	1	-	Corbula gibba	1	-	0	0	
13	Melinna palmata (sml)	1	-	Melinna palmata	1	-	0	0	
14	Ampharete lindstroemi (med - complete)	1	-	Ampharete lindstroemi agg.	1	-	0	0	
15	Eumida bahusiensis (med)	1	-	Eumida bahusiensis	1	-	0	0	
16	Heteromastus filiformis (med - anterior only)	1	-	Heteromastus filiformis	1	-	0	0	
17	Amphiura filiformis (med)	1	-	Amphiura filiformis	1	-	0	0	
18	Scoloplos armiger (lrg - complete)	1	-	Scoloplos (scoloplos) armiger	1	-	0	0	
19	Terebellides stroemi (lrg)	1	-	Terebellides stroemi	1	-	0	0	
20	Philine aperta (lrg)	1	-	Philine aperta	1	-	0	0	
21	Pholoe baltica (lrg - anterior only)	1	-	Pholoe baltica	1	-	0	0	
22	Abra nitida (med - v. good condition)	1	-	Abra nitida	1	-	0	0	
23	Photis longicaudata (med - appendages lost)	1	-	Photis longicaudata	1	-	0	0	
24	Ampelisca tenuicornis (med)	1	-	<b>Ampelisca diadema</b>	1	-	0	0	Taxonomic error
25	Hydrallmania falcata (1 x unattached; polyps present)	P	-	Hydrallmania falcata	P	-	0	0	
26	-	-	-	(Electra pilosa)	(P)	-	n/a	n/a	Ignore for stats - unintentional fauna
	<b>TOTAL</b>	<b>59</b>	<b>0</b>	<b>TOTAL**</b>	<b>60</b>	<b>0</b>	<b>0</b>	<b>0</b>	
<u>Residue Content</u>				<u>Residue Content</u>					
Component	Volume/Qty			Component	Picked		In Residue	Lost in Processing	
- (grit/gravel residue)	200ml	-	-	(grit/gravel residue)	-	-	200ml	n/a	
- (sand residue)	100ml	-	-	(sand residue)	-	-	-	n/a	
- (mud residue <0.5mm)	200ml	-	-	(mud residue <0.5mm)	-	-	-	n/a	
- Amphiura filiformis	1 x upper disc + arm bits	-	-	Amphiura filiformis	Picked	-	-	n/a	
- Phoronis sp.	1 x bit	-	-	Phoronis sp.	Picked	-	-	n/a	
- Euclymene oerstedii	1 x tail	-	-	Euclymene oerstedii	Picked	-	-	n/a	
- Parvicardium scabrum	1 x dead/empty	-	-	<b>Parvicardium ovale</b>	1	-	-	n/a	Dead; Taxonomic error Parvicardium scabrum
- Minuspio cf. multibranchiata	2 x bits	-	-	Minuspio cf. multibranchiata	Picked	-	-	n/a	

\*Biomass estimations of Participating Laboratory's vial contents.

\*\*May include individuals enumerated in 'Residue Content'.

NMBAQC Scheme Interim Results

NMBAQC Scheme Macrobenthic Exercise (MB) Results		Summary Data	
LabCode:	LB1636	Diff. In No. Taxa	-7
SampleCode:	MB17	Diff. In No. Individuals	-5
Exercise Deadline:	30/10/2009	Missed Taxa (in residue)	3
Sample Received:	25/01/10 (fauna only; residue disposed)	Missed Individuals (in residue)	4
Notes:	Artificial Sample prepared by Unicumarine	Taxonomic Errors	5
	1mm sieve mesh	Count Variance	-1
	No biomass data	Biomass %diff.	-
	Residue disposed	Bray-Curtis Similarity index	87.72

Unicumarine Ltd. Artificial Sample Contents				Participating Laboratory Data			Residue Resorting		Comments
Faunal Content (heads)				Faunal Content (heads)			Missed in Residue	Lost in Processing	
Taxon Number	Taxon Name	Number	Biomass*	Taxon Name	Number	Biomass			
1	Sternaspis scutata (med)	23	-	Sternaspidae	23	-	0	0	
2	Euclymene oerstedii (lrg)	3	-	Maldanidae	4	-	0	0	
3	Clymenura sp. (med)	1	-						
4	Melinna palmata (sml)	1	-	Ampharetidae	2	-	0	0	
5	Ampharete lindstroemi (med - complete)	1	-						
6	Eumida bahusiensis (med)	1	-	Phyllodocidae	1	-	0	0	
7	Terebellides stroemi (lrg)	1	-	Trichobranchidae	1	-	0	0	
8	Heteromastus filiformis (med - anterior only)	1	-	Capitellidae	1	-	0	0	
9	Owenia fusiformis (med/sml)	1	-	Oweniidae	1	-	0	0	
10	Scoloplos armiger (lrg - complete)	1	-	Orbiniidae	1	-	0	0	
11	Scalibregma inflatum (med)	3	-	Scalibregmidae	3	-	0	0	
12	Pholoe baltica (lrg - anterior only)	1	-	Pholoidae	1	-	0	0	
13	Ampelisca tenuicornis (med)	1	-	Ampeliscidae	1	-	0	0	
14	Photis longicaudata (med - appendages lost)	1	-	Isaeidae	1	-	0	0	Taxonomic error (Family: Photidae)
15	Amphiura filiformis (med)	1	-	Amphiuridae	1	-	0	0	
16	Edwardsia claparedii (lrg)	4	-	Edwardsiidae	4	-	0	0	
17	Kurtiella bidentata (4 x lrg, 2 x sml)	6	-	Montacutidae	4	-	0	2	2 specimens lost
18	Nucula nitidosa (1 x lrg, 1 x sml)	2	-	Nuculidae	2	-	0	0	
19	Abra nitida (med - v. good condition)	1	-	Tellinidae	1	-	0	0	Taxonomic error (Family: Semelidae)
20	Corbula gibba (lrg)	1	-	Yoldiidae	1	-	0	0	Taxonomic error (Family: Corbulidae)
21	Actiniaria (lrg)	1	-	'unlabelled vial - not on data sheet'	0	-	0	0	Taxonomic error
22	Philine aperta (lrg)	1	-	'unlabelled vial - not on data sheet'	0	-	0	0	Taxonomic error
23	Turritella communis (lrg)	1	-	-	0	-	0	1	Taxon lost
24	Phoronis sp. (med)	1	-	-	0	-	0	1	Taxon lost
25	Hydrallmania falcata (1 x unattached; polyps present)	P	-	-	-	-	0	P	Taxon lost
TOTAL		59	0	TOTAL**	54	0	0	4	
Residue Content				Residue Content					
Component	Volume/Qty			Component	Picked		In Residue	Lost in Processing	
- (grit/gravel residue)	200ml	-		(grit/gravel residue)	-	-	-	200ml	
- (sand residue)	100ml	-		(sand residue)	-	-	-	n/a	
- (mud residue <0.5mm)	200ml	-		(mud residue <0.5mm)	-	-	-	n/a	
- Amphiura filiformis	1 x upper disc + arm bits	-		Amphiura filiformis	1	-	-	n/a	
- Phoronis sp.	1 x bit	-		Phoronis sp.	Picked	-	-	n/a	
- Euclymene oerstedii	1 x tail	-		Euclymene oerstedii	Picked	-	-	n/a	
- Parvicardium scabrum	1 x dead/empty	-		Parvicardium scabrum	-	-	-	n/a	
- Minuspio cf. multibranchiata	2 x bits	-		Minuspio cf. multibranchiata	-	-	-	n/a	

\*Biomass estimations of Participating Laboratory's vial contents.

\*\*May include individuals enumerated in 'Residue Content'.

NMBAQC Scheme Interim Results

NMBAQC Scheme Macro-benthic Exercise (MB) Results		Summary Data	
LabCode:	LB1637	Diff. In No. Taxa	-1
SampleCode:	MB17	Diff. In No. Individuals	-6
Exercise Deadline:	30/10/2009	Missed Taxa (in residue)	1
Sample Received:	23/10/2009	Missed Individuals (in residue)	6
Notes:	Artificial Sample Prepared by Unicmarine	Taxonomic Errors	1
	1mm sieve mesh	Count Variance	0
		Biomass %diff.	6.56
		Bray-Curtis Similarity index	92.17

Unicomarine Ltd. Artificial Sample Contents				Participating Laboratory Data			Residue Resorting		Comments
Faunal Content (heads)				Faunal Content (heads)			Missed in Residue	Lost in Processing	
Taxon Number	Taxon Name	Number	Biomass*	Taxon Name	Number	Biomass			
1	Sternaspis scutata (med)	23	0.4798	Sternaspis scutata	23	0.5234	0	0	
2	Kurtiella bidentata (4 x lrg, 2 x sml)	6	0.0112	<b>Mysella bidentata</b>	2	0.0124	4	0	Name change
3	Edwardsia claparedii (lrg)	4	0.3467	Edwardsia claparedii	4	0.462	0	0	
4	Scalibregma inflatum (med)	3	0.0094	<b>Scalibregman inflatum</b>	3	0.0072	0	0	Spelling error
5	Euclymene oerstedii (lrg)	3	0.0252	Euclymene oerstedii	3	0.0331	0	0	
6	Nucula nitidosa (1 x lrg, 1 x sml)	2	0.0684	Nucula nitidosa	1	0.0693	1	0	
7	Turritella communis (lrg)	1	1.676	Turritella communis	1	1.7036	0	0	
8	Actiniaria (lrg)	1	-	<b>Actinaria</b>	P	-	0	0	Spelling error
9	Phoronis sp. (med)	1	0.001	Phoronis	1	0.0009	0	0	
10	Clymenura sp. (med)	1	0.0008	Clymenura	1	0.0007	0	0	
11	Owenia fusiformis (med/sml)	1	0.0033	Owenia fusiformis	1	0.003	0	0	
12	Corbula gibba (lrg)	1	-	-	0	-	0	1	Taxon lost
13	Melinna palmata (sml)	1	0.0024	Melinna palmata	1	0.0015	0	0	
14	Ampharete lindstroemi (med - complete)	1	0.0004	Ampharete lindstroemi	1	0.0001	0	0	
15	Eumida bahusiensis (med)	1	0.0009	Eumida	1	0.0006	0	0	
16	Heteromastus filiformis (med - anterior only)	1	0.0008	Heteromastus filiformis	1	0.0002	0	0	
17	Amphiura filiformis (med)	1	0.0649	Amphiura filiformis	1	0.0693	0	0	
18	Scoloplos armiger (lrg - complete)	1	0.0084	Scoloplos armiger	1	0.0085	0	0	
19	Terebellides stroemi (lrg)	1	0.0877	Terebellides stroemi	1	0.0956	0	0	
20	Philine aperta (lrg)	1	0.1356	Philine aperta	1	0.1382	0	0	
21	Pholoe baltica (lrg - anterior only)	1	0.0003	Pholoe baltica (sensu petersen)	1	<0.0001	0	0	
22	Abra nitida (med - v. good condition)	1	0.0008	Abra	1	0.0004	0	0	
23	Photis longicaudata (med - appendages lost)	1	0.0004	Photis longicaudata	1	0.0006	0	0	
24	Ampelisca tenuicornis (med)	1	0.0013	<b>Ampelisca diadema</b>	1	0.0005	0	0	Taxonomic error
25	Hydrallmania falcata (1 x unattached; polyps present)	P	-	Hydrallmania falcata	P	-	0	0	
TOTAL		59	2.9257	TOTAL**	53	3.1311	5	1	
Residue Content				Residue Content					
Component	Volume/Qty			Component	Picked		In Residue	Lost in Processing	
- (grit/gravel residue)	200ml	-	-	(grit/gravel residue)	-	-	200ml	n/a	
- (sand residue)	100ml	-	-	(sand residue)	-	-	-	n/a	
- (mud residue <0.5mm)	200ml	-	-	(mud residue <0.5mm)	-	-	-	n/a	
- Amphiura filiformis	1 x upper disc + arm bits	-	-	Amphiura filiformis	Picked	-	-	n/a	
- Phoronis sp.	1 x bit	-	-	Phoronis sp.	1	-	-	n/a	
- Euclymene oerstedii	1 x tail	-	-	Euclymene oerstedii	Picked	-	-	n/a	
- Parvicardium scabrum	1 x dead/empty	-	-	Parvicardium scabrum	-	-	-	n/a	
- Minuspio cf. multibranchiata	2 x bits	-	-	Minuspio cf. multibranchiata	-	-	-	n/a	

\*Biomass estimations of Participating Laboratory's vial contents.

\*\*May include individuals enumerated in 'Residue Content'.

NMBAQC Scheme Interim Results

NMBAQC Scheme Macro-benthic Exercise (MB) Results		Summary Data	
LabCode:	LB1638	Diff. In No. Taxa	-1
SampleCode:	MB17	Diff. In No. Individuals	8
Exercise Deadline:	30/10/2009	Missed Taxa (in residue)	2
Sample Received:	19/10/2009	Missed Individuals (in residue)	1
Notes:	Artificial Sample Prepared by Unicmarine	Taxonomic Errors	8
	Imm sieve mesh	Count Variance	9
	Sample stained	Biomass %diff.	-18.41
		Bray-Curtis Similarity index	75.59

Unicmarine Ltd. Artificial Sample Contents			Participating Laboratory Data			Residue Resorting		Comments	
Faunal Content (heads)			Faunal Content (heads)			Missed in Residue	Lost in Processing		
Taxon Number	Taxon Name	Number	Biomass*	Taxon Name	Number	Biomass			
1	Sternaspis scutata (med)	23	0.9323	<b>Sternaspis scutata</b>	23	0.6047	0	0	Spelling error
2	Kurtiella bidentata (4 x lrg, 2 x sml)	6	0.0222	<b>Mysella bidentata</b>	6	0.0205	0	0	Name change
3	Edwardsia claparedii (lrg)	4	0.337	Edwardsia claparedii	4	0.2005	0	0	
4	Scalibregma inflatum (med)	3	0.0039	Scalibregma inflatum	3	0.0029	0	0	
5	Euclymene oerstedii (lrg)	3	0.0256	<b>Heteroclymene robusta</b>	3	0.0244	0	0	Taxonomic error
6	Nucula nitidosa (1 x lrg, 1 x sml)	2	0.049	Nucula nitidosa	2	0.0434	0	0	
7	Turritella communis (lrg)	1	2.0498	Turritella communis	1	2.0431	0	0	
8	Actiniaria (lrg)	1	0.4649	Actinia equina	1	0.3408	0	0	
9	Phoronis sp. (med)	1	0.0038	Phoronis muelleri	1	0.004	0	0	
10	Clymenura sp. (med)	1	0.0015	<b>Rhodine loveni</b>	1	0.0019	0	0	Taxonomic error
11	Owenia fusiformis (med/sml)	1	0.0089	Owenia fusiformis	1	0.0097	0	0	
12	Corbula gibba (lrg)	1	0.1024	<b>Fabulina fabula</b>	1	0.0904	0	0	Taxonomic error
13	Melinna palmata (sml)	1	-	-	0	-	0	1	Taxon lost
14	Ampharete lindstroemi (med - complete)	1	0.001	<b>Ampharete finmarchica</b>	1	0.0015	0	0	WoRMS correction (?); taxonomy under review
15	Eumida bahusiensis (med)	1	0.0007	<b>Eteone flava</b>	1	0.0011	0	0	Taxonomic error
16	Heteromastus filiformis (med - anterior only)	1	0.0003	<b>Mediomastus fragilis</b>	1	0.0008	0	0	Taxonomic error
17	Amphiura filiformis (med)	1	0.0445	Amphiura filiformis	1	0.0366	0	0	
18	Scoloplos armiger (lrg - complete)	1	0.0039	Scoloplos armiger	1	0.0032	0	0	
19	Terebellides stroemi (lrg)	1	0.0099	Terebellides stroemi	1	0.0093	0	0	
20	Philine aperta (lrg)	1	0.2006	Philine aperta	1	0.1592	0	0	
21	Pholoe baltica (lrg - anterior only)	1	0.0003	<b>Aphroditidae</b>	1	0.0007	0	0	Taxonomic error
22	Abra nitida (med - v. good condition)	1	0.0014	<b>Abra alba</b>	1	0.002	0	0	Taxonomic error
23	Photis longicaudata (med - appendages lost)	1	0.0011	Photis longicaudata	1	0.001	0	0	
24	Ampelisca tenuicornis (med)	1	0.0005	<b>Ampelisca typica</b>	1	0.0006	0	0	Taxonomic error
25	Hydrallmania falcata (1 x unattached; polyps present)	P	-	-	-	-	0	P	Taxon lost
26	-	-	-	<b>Foraminiferida</b>	9	(0.0001)	n/a	n/a	Dead
27	-	-	-	<b>(Nematoda)</b>	(1)	(0.0001)	n/a	n/a	Ignore for stats - contamination
TOTAL		59	4.2655	TOTAL**		67	3.6023	0	1
Residue Content			Residue Content						
Component	Volume/Qty	-	Component	Picked	-	In Residue	Lost in Processing		
- (grit/gravel residue)	200ml	-	(grit/gravel residue)	-	-	200ml	n/a		
- (sand residue)	100ml	-	(sand residue)	-	-	-	n/a		
- (mud residue <0.5mm)	200ml	-	(mud residue <0.5mm)	-	-	-	n/a		
- Amphiura filiformis	1 x upper disc + arm bits	-	Amphiura filiformis	Picked	-	-	n/a		
- Phoronis sp.	1 x bit	-	Phoronis sp.	Picked	-	-	n/a		
- Euclymene oerstedii	1 x tail	-	Euclymene oerstedii	Picked	-	-	n/a		
- Parvicardium scabrum	1 x dead/empty	-	Parvicardium scabrum	-	-	-	n/a		
- Minuspio cf. multibranchiata	2 x bits	-	Minuspio cf. multibranchiata	-	-	-	n/a		

\*Biomass estimations of Participating Laboratory's vial contents.

\*\*May include individuals enumerated in 'Residue Content'.



**Table 1. Results from the analysis of Macrobenthic sample MB17 by the participating laboratories.**

1	2	3	4	5	6	7	8	9	10	11	12	13	14	15
LabCode	Number of Taxa				Number of Individuals				Not extracted/lost			Individuals	Similarity	Taxonomic
	PL	UM	Diff (n)	%max	PL	UM	Diff (n)	%max	New Taxa	Ind	%ind	Count Error	index	errors
LB1601	24	25	-1	4.0	60	59	1	1.7	2	1	1.7	2	92.44	3
LB1602	22	25	-3	12.0	55	59	-4	6.8	3	5	8.5	1	94.83	0
LB1603	19	25	-6	24.0	53	59	-6	10.2	6	6	10.2	0	92.86	1
LB1604	21	25	-4	16.0	54	59	-5	8.5	4	5	8.5	0	94.74	0
LB1605	23	25	-2	8.0	57	59	-2	3.4	2	3	5.1	1	94.02	1
LB1607	25	25	0	0.0	60	59	1	1.7	0	0	0.0	1	99.17	0
LB1608	25	25	0	0.0	58	59	-1	1.7	1	1	1.7	0	97.52	1
LB1609	23	25	-2	8.0	54	59	-5	8.5	2	5	8.5	0	93.91	1
LB1621	26	25	1	3.8	66	59	7	10.6	0	2	3.4	9	92.19	0
LB1635	26	25	1	3.8	60	59	1	1.7	0	0	0.0	1	97.52	2
LB1636	18	25	-7	28.0	54	59	-5	8.5	3	4	6.8	-1	87.72	5
LB1637	24	25	-1	4.0	53	59	-6	10.2	1	6	10.2	0	92.17	1
LB1638	24	25	-1	4.0	67	59	8	11.9	2	1	1.7	9	75.59	8

Key: PL - participating laboratory.  
 UM - Unicomarine Ltd.  
 "-" - No data. See Section 6 in the forthcoming Annual Report, for details.

**Table 2. Comparison of the efficiency of extraction of fauna by the participating laboratories for the major taxonomic groups present in sample MB17.**

LabCode		Nemertea	Polychaeta	Oligochaeta	Chelicerata	Crustacea	Echinodermata	Mollusca	Other	Overall
LB1601	UM count	-	38	-	-	2	1	12	6	59
	PL missed	-	1	-	-	0	0	0	0	1
	%missed	-	2.6	-	-	0.0	0.0	0.0	0.0	1.7
LB1602	UM count	-	38	-	-	2	1	12	6	59
	PL missed	-	4	-	-	0	0	1	0	5
	%missed	-	10.5	-	-	0.0	0.0	8.3	0.0	8.5
LB1603	UM count	-	38	-	-	2	1	12	6	59
	PL missed	-	6	-	-	0	0	0	0	6
	%missed	-	15.8	-	-	0.0	0.0	0.0	0.0	10.2
LB1604	UM count	-	38	-	-	2	1	12	6	59
	PL missed	-	4	-	-	0	0	1	0	5
	%missed	-	10.5	-	-	0.0	0.0	8.3	0.0	8.5
LB1605	UM count	-	38	-	-	2	1	12	6	59
	PL missed	-	1	-	-	0	0	2	0	3
	%missed	-	2.6	-	-	0.0	0.0	16.7	0.0	5.1
LB1607	UM count	-	38	-	-	2	1	12	6	59
	PL missed	-	0	-	-	0	0	0	0	0
	%missed	-	0.0	-	-	0.0	0.0	0.0	0.0	0.0
LB1608	UM count	-	38	-	-	2	1	12	6	59
	PL missed	-	1	-	-	0	0	0	0	1
	%missed	-	2.6	-	-	0.0	0.0	0.0	0.0	1.7
LB1609	UM count	-	38	-	-	2	1	12	6	59
	PL missed	-	2	-	-	0	0	2	1	5
	%missed	-	5.3	-	-	0.0	0.0	16.7	16.7	8.5
LB1621	UM count	-	38	-	-	2	1	12	6	59
	PL missed	-	1	-	-	0	0	1	0	2
	%missed	-	2.6	-	-	0.0	0.0	8.3	0.0	3.4
LB1635	UM count	-	38	-	-	2	1	12	6	59
	PL missed	-	0	-	-	0	0	0	0	0
	%missed	-	0.0	-	-	0.0	0.0	0.0	0.0	0.0
LB1636	UM count	-	38	-	-	2	1	12	6	59
	PL missed	-	0	-	-	0	0	3	1	4
	%missed	-	0.0	-	-	0.0	0.0	25.0	16.7	6.8
LB1637	UM count	-	38	-	-	2	1	12	6	59
	PL missed	-	0	-	-	0	0	6	0	6
	%missed	-	0.0	-	-	0.0	0.0	50.0	0.0	10.2
LB1638	UM count	-	38	-	-	2	1	12	6	59
	PL missed	-	1	-	-	0	0	0	0	1
	%missed	-	2.6	-	-	0.0	0.0	0.0	0.0	1.7

Key: PL - participating laboratory.  
 UM - Unicmarine Ltd.  
 "-" - No data.

**Table 3. Comparison of the estimates of biomass made by the participating laboratories with those made by Unicmarine Ltd. for the major taxonomic groups present in sample MB17. Values are in grams (g).**

LabCode		Nemertea	Polychaeta	Oligochaeta	Chelicerata	Crustacea	Echinodermata	Mollusca	Other	Overall	
LB1601	PL	-	0.4632	-	-	0.0015	0.0501	1.632	0.161	2.3078	
	UM	-	0.6301	-	-	0.001	0.0737	1.6731	0.2503	2.6282	
	%diff.	-	-36.0	-	-	33.3	-47.1	-2.5	-55.5	-13.88335	
LB1602	PL	-	1.1472	-	-	0.0002	0.0465	2.7647	0.6201	4.5787	
	UM	-	1.3028	-	-	0.0011	0.0494	2.7957	0.6806	4.8296	
	%diff.	-	-13.6	-	-	-450.0	-6.2	-1.1	-9.8	-5.479721	
LB1603	PL	-	-	-	-	-	-	-	-	0	
	UM	-	NO BIOMASS DATA							-	0
	%diff.	-	-	-	-	-	-	-	-	-	
LB1604	PL	-	0.75262	-	-	0.00114	0.03725	2.49362	0.66423	3.94886	
	UM	-	0.7387	-	-	0.0011	0.0328	2.4619	0.5387	3.7732	
	%diff.	-	1.8	-	-	3.5	11.9	1.3	18.9	4.4	
LB1605	PL	-	0.778	-	-	0.0012	0.0762	0.4127	0.5987	1.8668	
	UM	-	0.6739	-	-	0.0015	0.0647	0.3743	0.5442	1.6586	
	%diff.	-	13.4	-	-	-25.0	15.1	9.3	9.1	11.2	
LB1607	PL	-	-	-	-	-	-	-	-	0	
	UM	-	NO BIOMASS DATA							-	0
	%diff.	-	-	-	-	-	-	-	-	-	
LB1608	PL	-	-	-	-	-	-	-	-	0	
	UM	-	NO BIOMASS DATA							-	0
	%diff.	-	-	-	-	-	-	-	-	-	
LB1609	PL	-	-	-	-	-	-	-	-	0	
	UM	-	NO BIOMASS DATA							-	0
	%diff.	-	-	-	-	-	-	-	-	-	
LB1621	PL	-	-	-	-	-	-	-	-	0	
	UM	-	NO BIOMASS DATA							-	0
	%diff.	-	-	-	-	-	-	-	-	-	
LB1635	PL	-	-	-	-	-	-	-	-	0	
	UM	-	NO BIOMASS DATA							-	0
	%diff.	-	-	-	-	-	-	-	-	-	
LB1636	PL	-	-	-	-	-	-	-	-	0	
	UM	-	NO BIOMASS DATA							-	0
	%diff.	-	-	-	-	-	-	-	-	-	
LB1637	PL	-	0.6739	-	-	0.0011	0.0693	1.9239	0.4629	3.1311	
	UM	-	0.6194	-	-	0.0017	0.0649	1.892	0.3477	2.9257	
	%diff.	-	8.1	-	-	-54.5	6.3	1.7	24.9	6.6	
LB1638	PL	-	0.6602	-	-	0.0016	0.0366	2.3586	0.5453	3.6023	
	UM	-	0.9883	-	-	0.0016	0.0445	2.4254	0.8057	4.2655	
	%diff.	-	-49.7	-	-	0.0	-21.6	-2.8	-47.8	-18.4	

Key: PL - participating laboratory  
 UM - Unicmarine Ltd.  
 "-" - No data.

**Table 4. Variation in faunal content reported for the artificial replicate samples distributed as MB17.**

<u>Taxa*</u>						
LabCode	Polychaeta	Crustacea	Echinodermata	Mollusca	Other	Total taxa
<b>UM data</b>	<b>12</b>	<b>2</b>	<b>1</b>	<b>6</b>	<b>4</b>	<b>25</b>
LB1601	11	2	1	7	3	24
LB1602	9	2	1	6	4	22
LB1603	7	2	1	6	3	19
LB1604	9	2	1	6	3	21
LB1605	12	2	1	5	3	23
LB1607	12	2	1	5	4	24
LB1608	11	2	1	6	5	25
LB1609	10	2	1	6	4	23
LB1621	12	2	1	6	5	26
LB1635	12	2	1	7	4	26
LB1636	10	2	1	4	1	18
LB1637	12	2	1	5	4	24
LB1638	11	2	1	6	4	24
<b>Mean</b>	<b>11</b>	<b>2</b>	<b>1</b>	<b>6</b>	<b>4</b>	<b>23</b>
<b>Max</b>	<b>12</b>	<b>2</b>	<b>1</b>	<b>7</b>	<b>5</b>	<b>26</b>
<b>Min</b>	<b>7</b>	<b>2</b>	<b>1</b>	<b>4</b>	<b>1</b>	<b>18</b>

\*UM data = artificial sample circulated

<u>Individuals*</u>						
LabCode	Polychaeta	Crustacea	Echinodermata	Mollusca	Other	Total Ind.
<b>UM data</b>	<b>38</b>	<b>2</b>	<b>1</b>	<b>12</b>	<b>6</b>	<b>59</b>
LB1601	37	2	2	13	6	60
LB1602	34	2	2	11	6	55
LB1603	32	2	1	12	6	53
LB1604	34	2	1	11	6	54
LB1605	37	2	2	10	6	57
LB1607	38	2	1	11	7	59
LB1608	37	2	1	12	6	58
LB1609	35	2	1	10	6	54
LB1621	46	2	1	11	6	66
LB1635	38	2	1	13	6	60
LB1636	38	2	2	8	4	54
LB1637	38	2	1	6	6	53
LB1638	37	2	1	12	15	67
<b>Mean</b>	<b>37</b>	<b>2</b>	<b>1</b>	<b>11</b>	<b>7</b>	<b>58</b>
<b>Max</b>	<b>46</b>	<b>2</b>	<b>2</b>	<b>13</b>	<b>15</b>	<b>67</b>
<b>Min</b>	<b>32</b>	<b>2</b>	<b>1</b>	<b>6</b>	<b>4</b>	<b>53</b>

\*UM data = artificial sample circulated

**Table 5. Sample processing options selected for MB16 by participating laboratories.**

		LB1601	LB1602	LB1603	LB1604	LB1605	LB1607	LB1608	LB1609	LB1621	LB1635	LB1636	LB1637	LB1638	
<b>Faunal groups extracted*</b>	Nematodes	<input checked="" type="checkbox"/>	<input checked="" type="checkbox"/>	<input checked="" type="checkbox"/>	<input checked="" type="checkbox"/>	<input checked="" type="checkbox"/>	<input checked="" type="checkbox"/>	<input checked="" type="checkbox"/>	<input checked="" type="checkbox"/>	<b>LAB DETAILS NOT SUPPLIED</b>	<input checked="" type="checkbox"/>	<b>LAB DETAILS NOT SUPPLIED</b>	<input checked="" type="checkbox"/>	<input checked="" type="checkbox"/>	
	Bryozoans	<input checked="" type="checkbox"/>	<input checked="" type="checkbox"/>	<input checked="" type="checkbox"/>	<input checked="" type="checkbox"/>	<input checked="" type="checkbox"/>	<input checked="" type="checkbox"/>	<input checked="" type="checkbox"/>	<input checked="" type="checkbox"/>		<input checked="" type="checkbox"/>		<input checked="" type="checkbox"/>	<input checked="" type="checkbox"/>	<input checked="" type="checkbox"/>
	Hydroids	<input checked="" type="checkbox"/>	<input checked="" type="checkbox"/>	<input checked="" type="checkbox"/>	<input checked="" type="checkbox"/>	<input checked="" type="checkbox"/>	<input checked="" type="checkbox"/>	<input checked="" type="checkbox"/>	<input checked="" type="checkbox"/>		<input checked="" type="checkbox"/>		<input checked="" type="checkbox"/>	<input checked="" type="checkbox"/>	<input checked="" type="checkbox"/>
	Copepods	<input checked="" type="checkbox"/>	<input checked="" type="checkbox"/>	<input checked="" type="checkbox"/>	<input checked="" type="checkbox"/>	<input checked="" type="checkbox"/>	<input checked="" type="checkbox"/>	<input checked="" type="checkbox"/>	<input checked="" type="checkbox"/>		<input checked="" type="checkbox"/>		<input checked="" type="checkbox"/>	<input checked="" type="checkbox"/>	<input checked="" type="checkbox"/>
	Ostracods	<input checked="" type="checkbox"/>	<input checked="" type="checkbox"/>	<input checked="" type="checkbox"/>	<input checked="" type="checkbox"/>	<input checked="" type="checkbox"/>	<input checked="" type="checkbox"/>	<input checked="" type="checkbox"/>	<input checked="" type="checkbox"/>		<input checked="" type="checkbox"/>		<input checked="" type="checkbox"/>	<input checked="" type="checkbox"/>	<input checked="" type="checkbox"/>
	Anthozoans	<input checked="" type="checkbox"/>	<input checked="" type="checkbox"/>	<input checked="" type="checkbox"/>	<input checked="" type="checkbox"/>	<input checked="" type="checkbox"/>	<input checked="" type="checkbox"/>	<input checked="" type="checkbox"/>	<input checked="" type="checkbox"/>		<input checked="" type="checkbox"/>		<input checked="" type="checkbox"/>	<input checked="" type="checkbox"/>	<input checked="" type="checkbox"/>
	Tunicates	<input checked="" type="checkbox"/>	<input checked="" type="checkbox"/>	<input checked="" type="checkbox"/>	<input checked="" type="checkbox"/>	<input checked="" type="checkbox"/>	<input checked="" type="checkbox"/>	<input checked="" type="checkbox"/>	<input checked="" type="checkbox"/>		<input checked="" type="checkbox"/>		<input checked="" type="checkbox"/>	<input checked="" type="checkbox"/>	<input checked="" type="checkbox"/>
	Foraminifera	<input checked="" type="checkbox"/>	<input checked="" type="checkbox"/>	<input checked="" type="checkbox"/>	<input checked="" type="checkbox"/>	<input checked="" type="checkbox"/>	<input checked="" type="checkbox"/>	<input checked="" type="checkbox"/>	<input checked="" type="checkbox"/>		<input checked="" type="checkbox"/>		<input checked="" type="checkbox"/>	<input checked="" type="checkbox"/>	<input checked="" type="checkbox"/>
	Algae	<input checked="" type="checkbox"/>	<input checked="" type="checkbox"/>	<input checked="" type="checkbox"/>	<input checked="" type="checkbox"/>	<input checked="" type="checkbox"/>	<input checked="" type="checkbox"/>	<input checked="" type="checkbox"/>	<input checked="" type="checkbox"/>		<input checked="" type="checkbox"/>		<input checked="" type="checkbox"/>	<input checked="" type="checkbox"/>	<input checked="" type="checkbox"/>
	Aquatic Insects	<input checked="" type="checkbox"/>	<input checked="" type="checkbox"/>	<input checked="" type="checkbox"/>	<input checked="" type="checkbox"/>	<input checked="" type="checkbox"/>	<input checked="" type="checkbox"/>	<input checked="" type="checkbox"/>	<input checked="" type="checkbox"/>		<input checked="" type="checkbox"/>		<input checked="" type="checkbox"/>	<input checked="" type="checkbox"/>	<input checked="" type="checkbox"/>

*\* Note that all faunal groups are assumed to be extracted when no sample processing details has been submitted*

Figure 1. MB17 data (Untransformed - Raw).

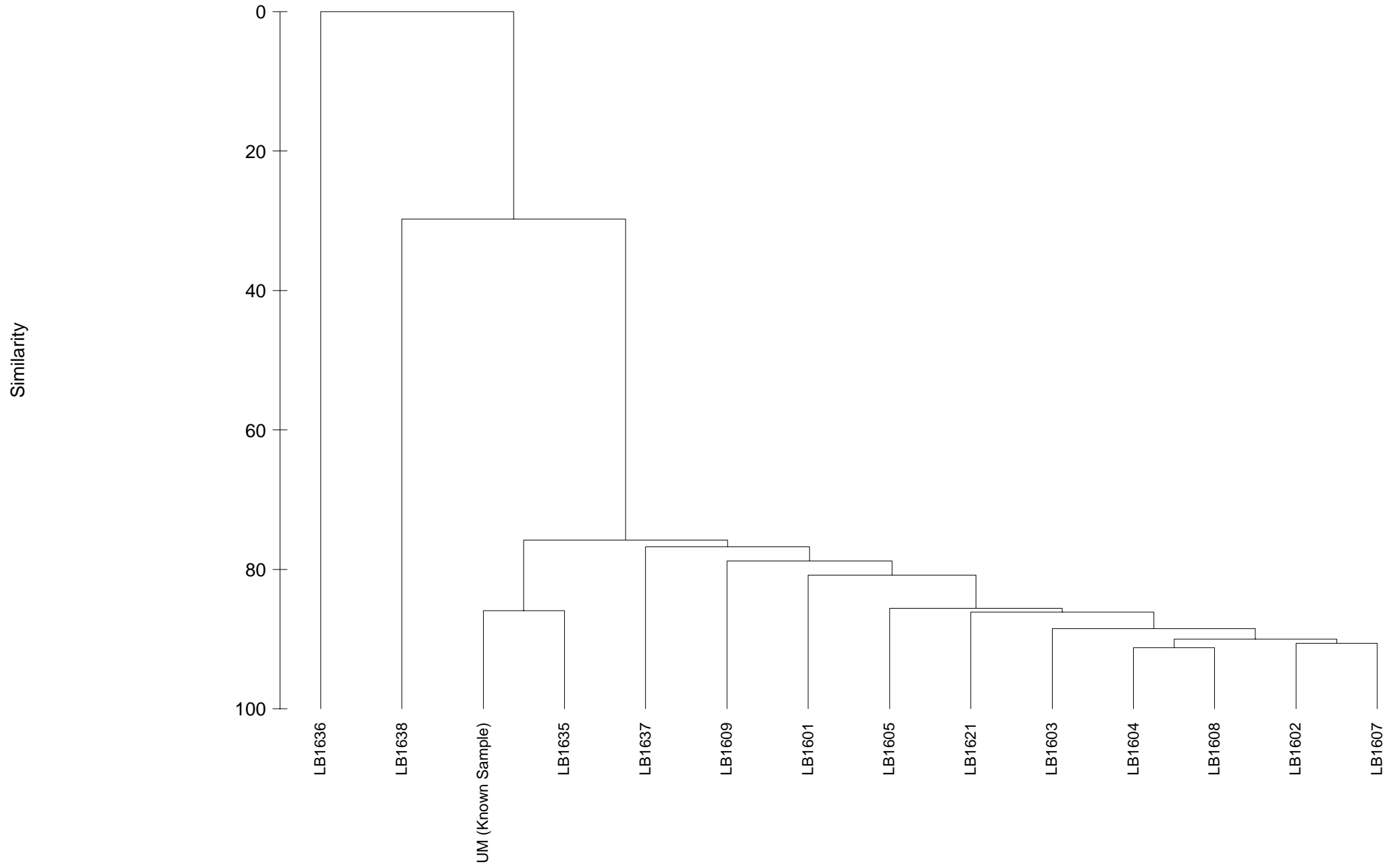


Figure 2. MB17 data (Untransformed - Adjusted).

