

Cefas- Uses of PSA data to inform Biology

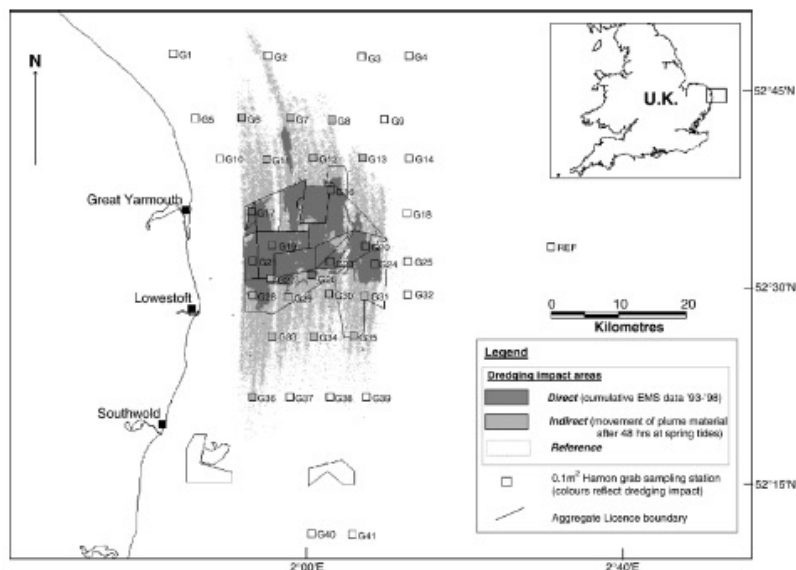


Fig. 2. Location of sampling stations in relation to the distribution of aggregate extraction licences, areas subject to 'direct' impact between 1993 and 1998 (based on annual EMS records), areas of 'indirect impact' (determined from model output showing all areas which may have been exposed to indirect 'plume effects' and reference areas. Licence areas off Southwold are also shown in this figure, but no data are provided on dredging impacts associated with these areas.

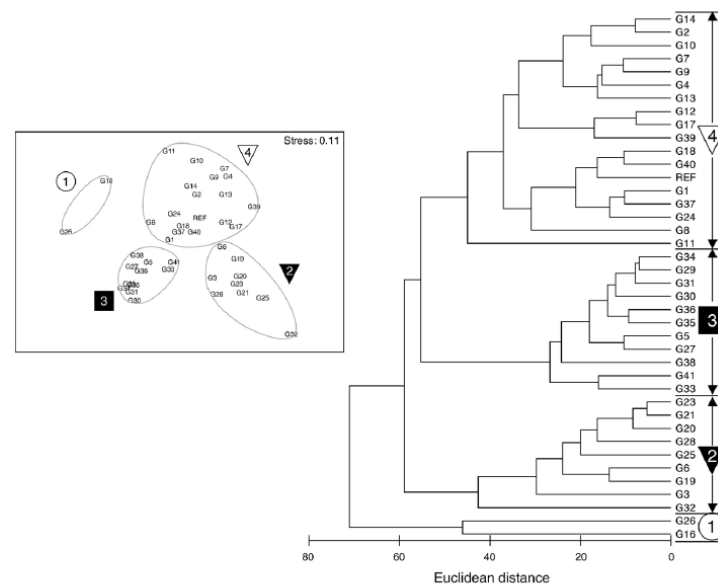


Fig. 3. Dendrogram showing clustering of samples based on percentage particle size composition.

Table 1
Characteristic percentage particle size composition of the particle size clusters identified in the broad-scale survey

Cluster	1	2	3	4
%Gravel	13	10	50	9
%Coarse sand	11	55	10	13
%Medium sand	0	25	20	48
%Fine sand	28	8	14	25
%Mud/silt clay	48	2	6	5
Average similarity (%)	54.85	76.63	81.31	70.07

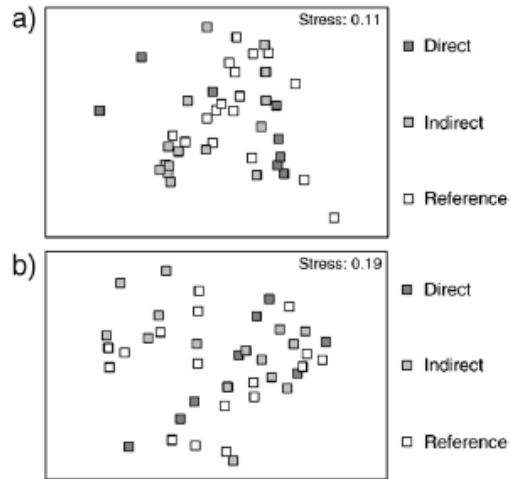


Fig. 9. Multidimensional scaling (MDS) ordination of (a) percentage particle size distributions (untransformed data) and (b) macrobenthic data (fourth-root transformed). Samples are colour coded according to their position in relation to the location of dredging impacts (see Fig. 1).

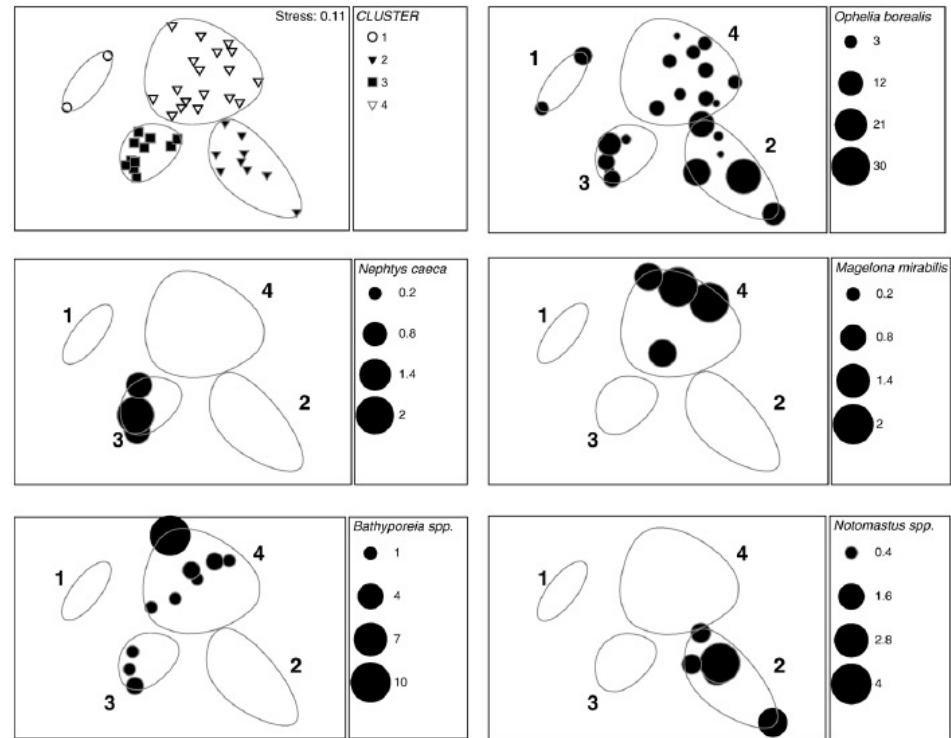



Fig. 11. Faunal abundances overlaid on the particle size MDS ordination.


Collection of seabed sediments for later analysis of particle size composition

Burnham Laboratory (Benthic Ecology)



Burnham Laboratory (Benthic Ecology)
Standard Operating Procedure
(SOP number 1381)
(Issue number 1.0)


SAMPLING AND ANALYSIS OF THE MACROBENTHIC INFAUNA FROM SOFT SEDIMENTS



CEFAS
Remembrance Avenue
Burnham-on-Crouch
Essex
CM0 8HA


V1 12 Apr04 SOP (1381) Issue (1.0) Page 1 of 19

Laboratory (Benthos)



Burnham Laboratory (Benthos)
Standard Operating Procedure
(SOP number: 1380)
(Issue number: 1)


SOP FOR THE COLLECTION OF MACROFAUNAL SAMPLES USING A 0.1 m² HAMDN GRAB



Burnham Laboratory
Remembrance Avenue
Burnham-on-Crouch, Essex
CM0 8HA

V2 12 Apr04 SOP (1380) Issue (1) Page 1 of 16

Burnham Laboratory – Benthos Function



Burnham Laboratory
Benthos Function
Standard Operating Procedure
SOP number 1391
Issue number 1

Analysis of the Cobble fraction from grab samples

Burnham Laboratory
Remembrance Avenue
Burnham-on-Crouch
Essex CM0 8HA

SOP 1391, Issue 1 Page 1 of 12