

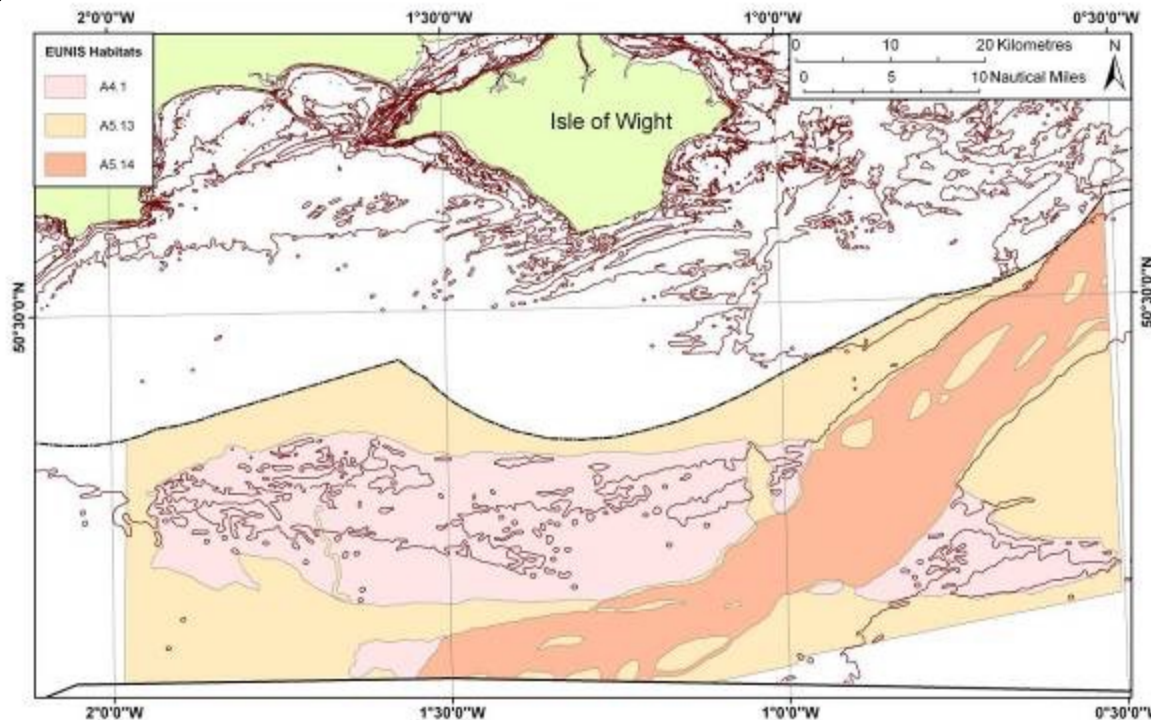


# Use of PSA data for habitat mapping

Markus Diesing  
Marine Habitats & Mapping Team

# What is habitat mapping?

- Plotting the distribution and extent of habitats
- Output: map with complete coverage of the seabed showing distinct boundaries separating adjacent habitats



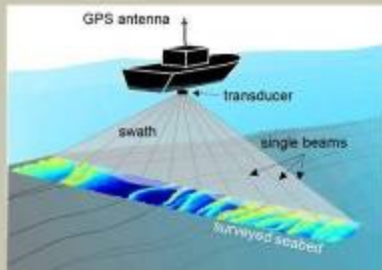
# What are habitats?

- Place where an animal or plant lives
- Place where a community lives
- Physical and environmental conditions that support a particular community
- Often used synonymous with biotopes



# How do we map habitats?

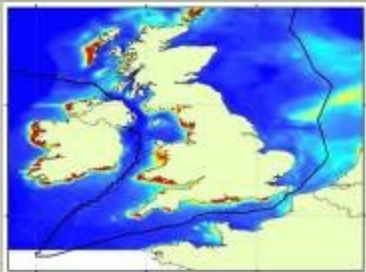
## Input



**Acoustic mapping**  
Multibeam  
Sidescan Sonar

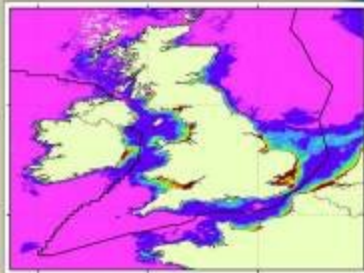


**Ground-truth sampling**  
Grabs, trawls, video

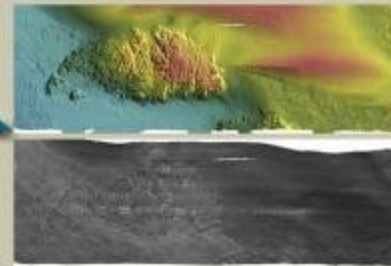


**Remote sensing**

**Modelling**  
Waves, tides



## Product

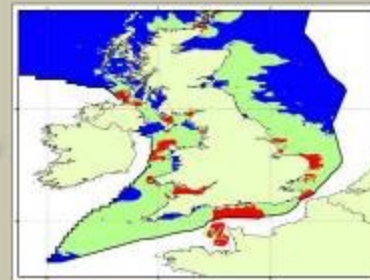


**Acoustic base maps**

**Substrate  
Biota**



**Exposure**

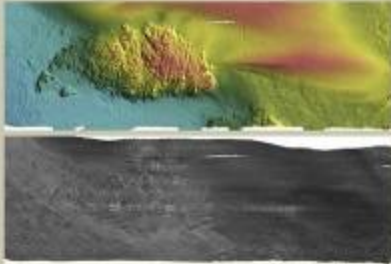


**Biological zones**



# How do we map habitats?

## Product



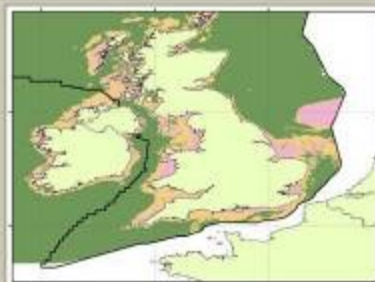
Acoustic base maps



Substrate  
Biota

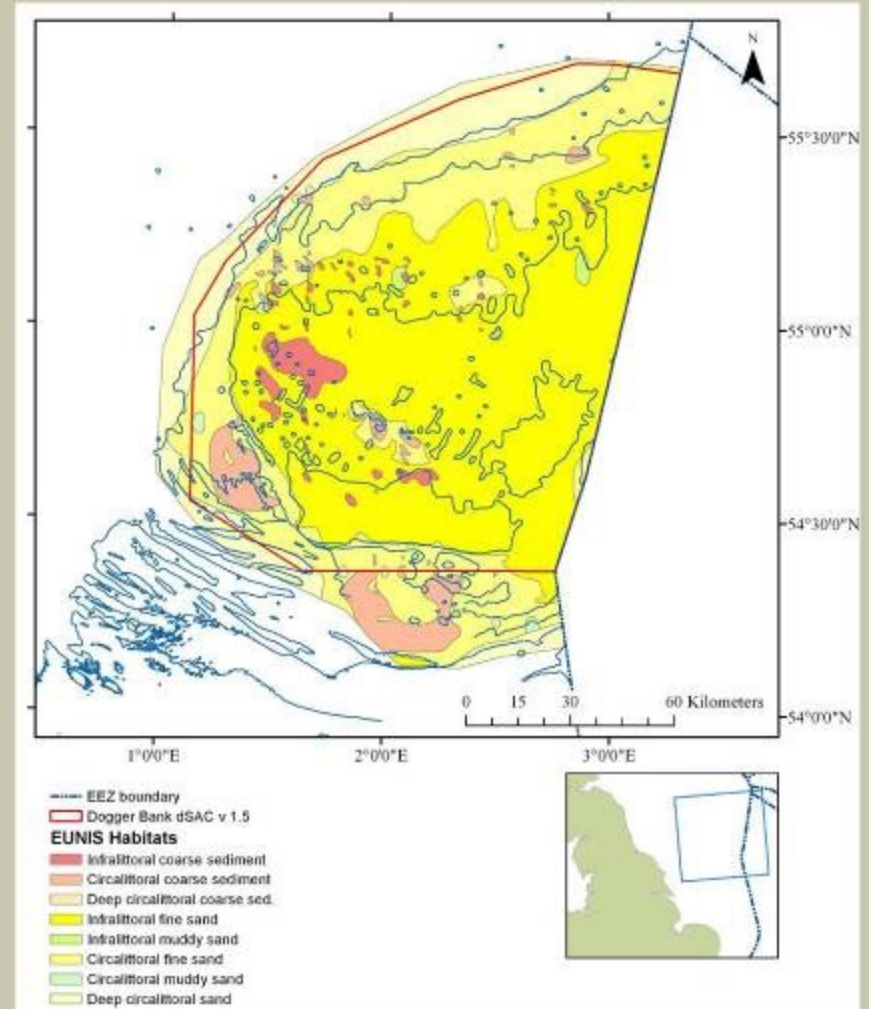


Exposure

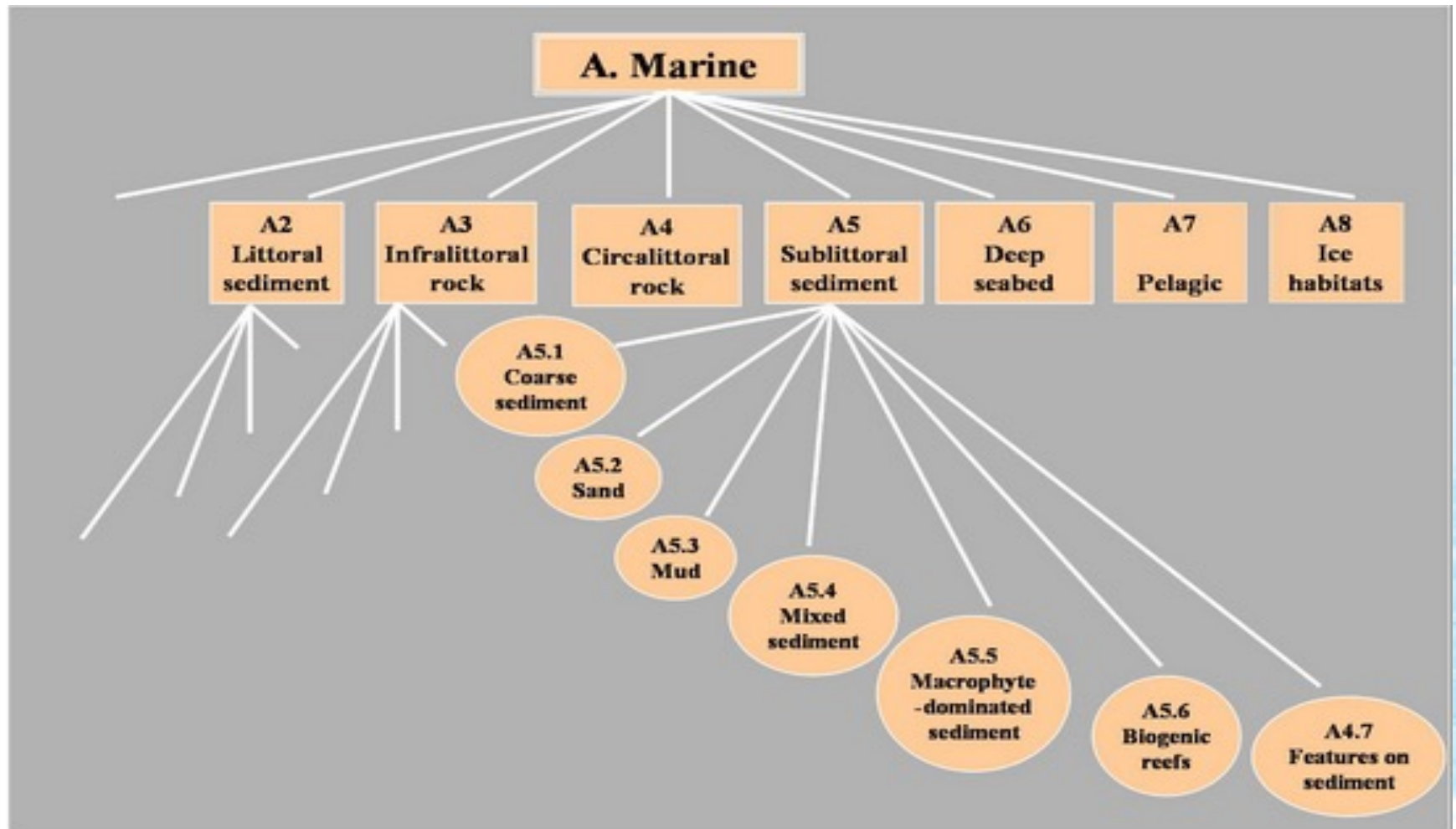


Biological zones

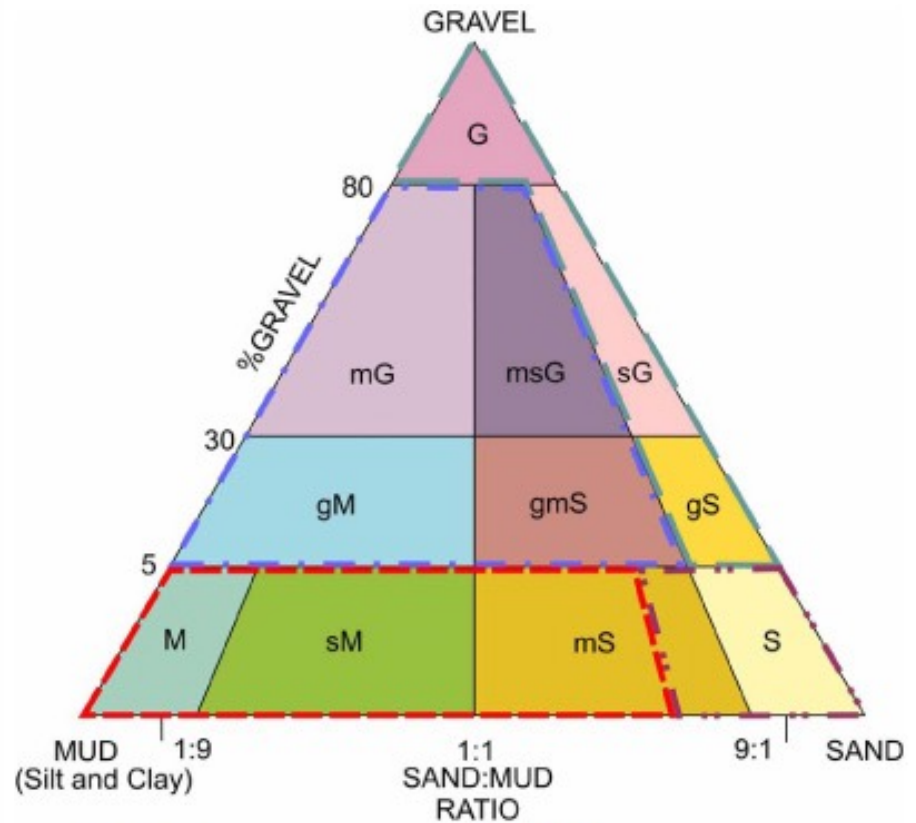
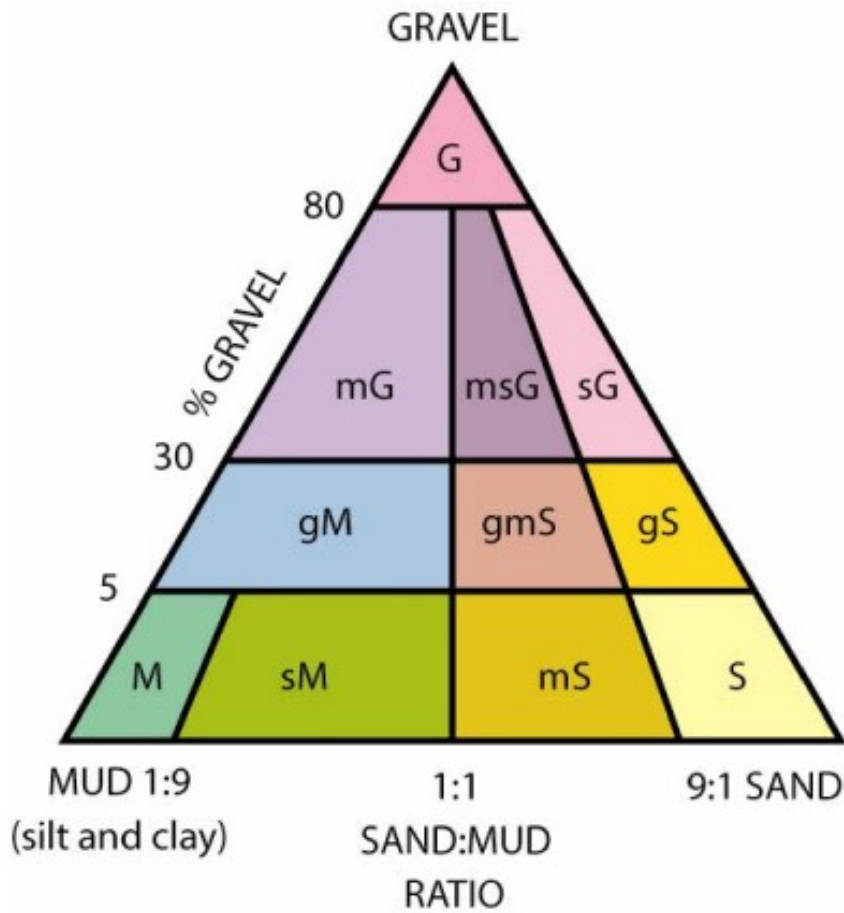
## Habitat map



# EUNIS classification

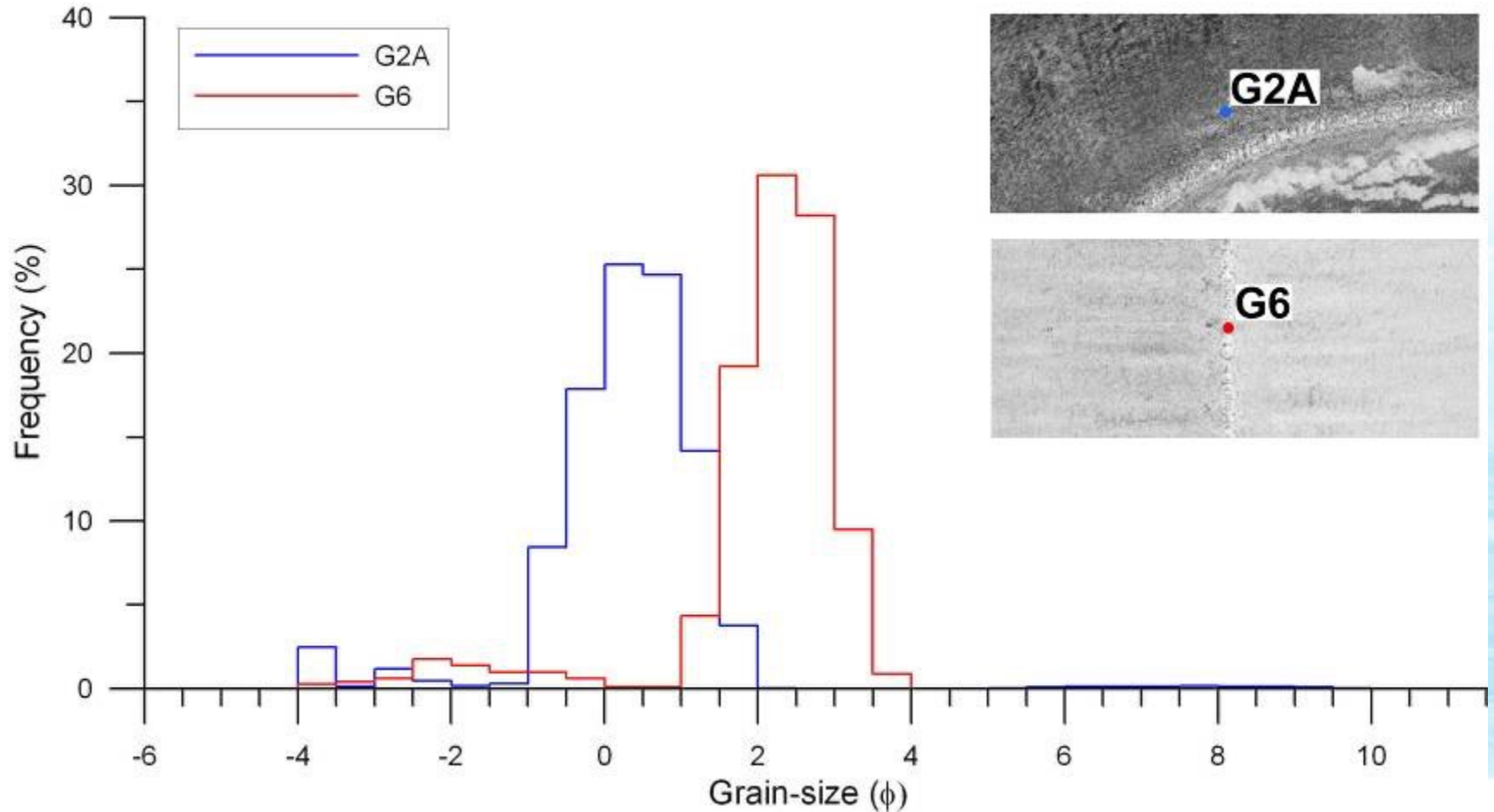


# Reclassification



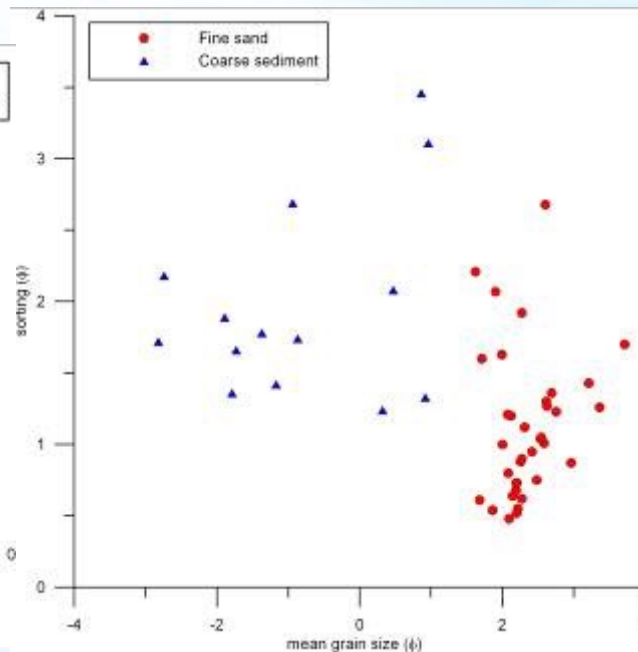
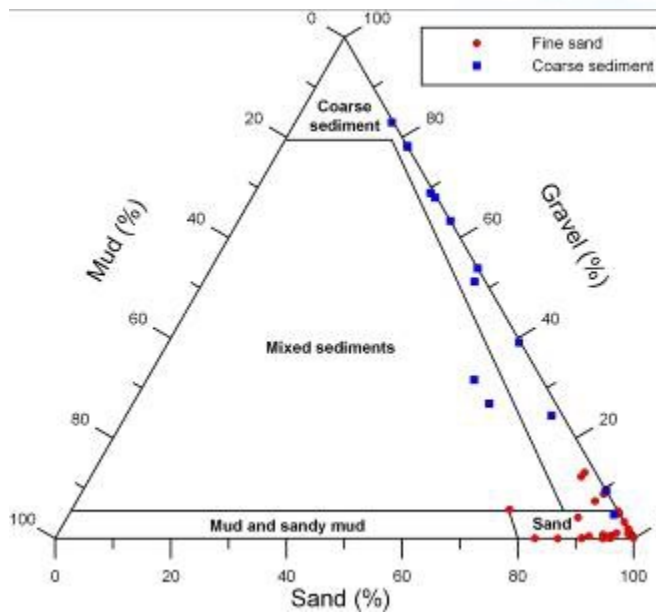
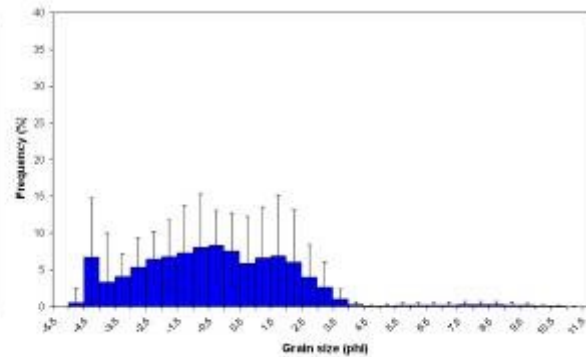
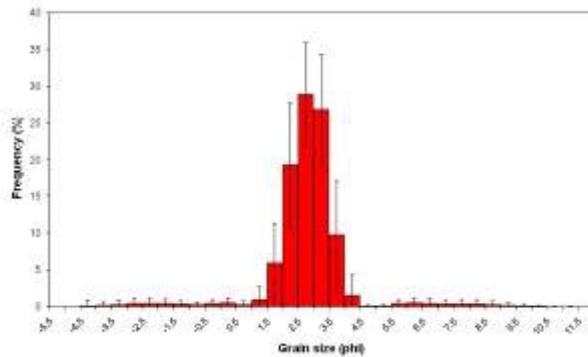
- - - Mixed sediment
- - - Coarse sediment
- - - Mud and sandy mud
- - - Sand and muddy sand

# Same EUNIS class but...



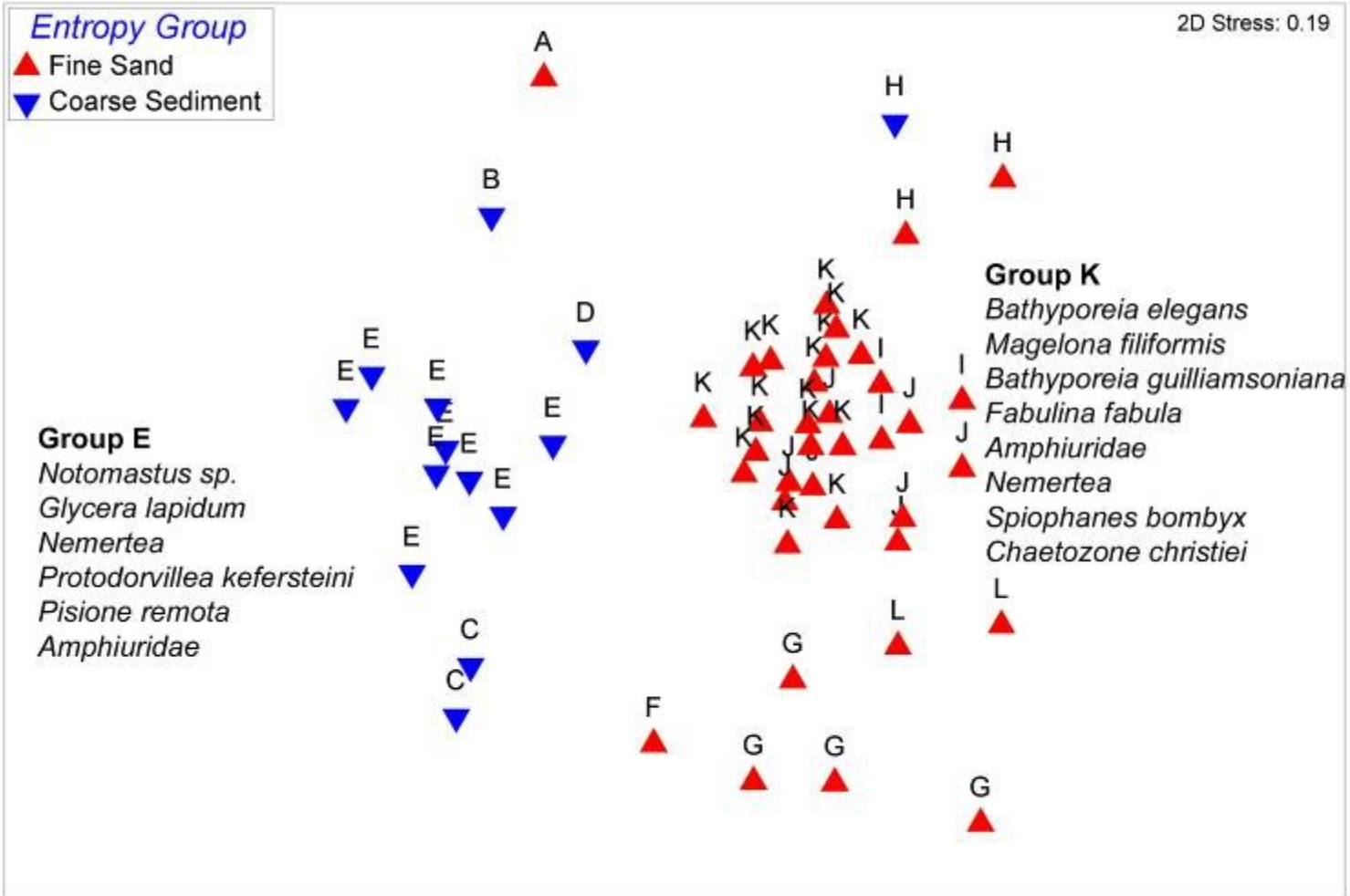


# Entropy analysis



# Infaunal groups

Transform: Square root  
 Resemblance: S17 Bray Curtis similarity



# Current developments

- Attempt to link backscatter histograms, particle-size distributions and infaunal species abundance using Primer  
(abstract submitted to GeoHab Conference)

# Questions?

